

*
**

Archive of SID

// :

// :

*
**

)
(

:()

/	/		
/	/		
/	/		
/	/		
/	/		
/	/		
/	/		
/	/		
/	/		
/	/		
/	/		
/	/		
/	/		
/	/		

Archive of SID

()

()

() / /

() ()

()

(Ding, et al., 1995)

B
(APHA., 1998)

(MC Sorley, R.1991 and 2002).

(/) (G)

() () () ()

()

(/)

:()

(d10)		()		
		()		
/	/	/	**	
/	/	/	*	
/	/	/	**	

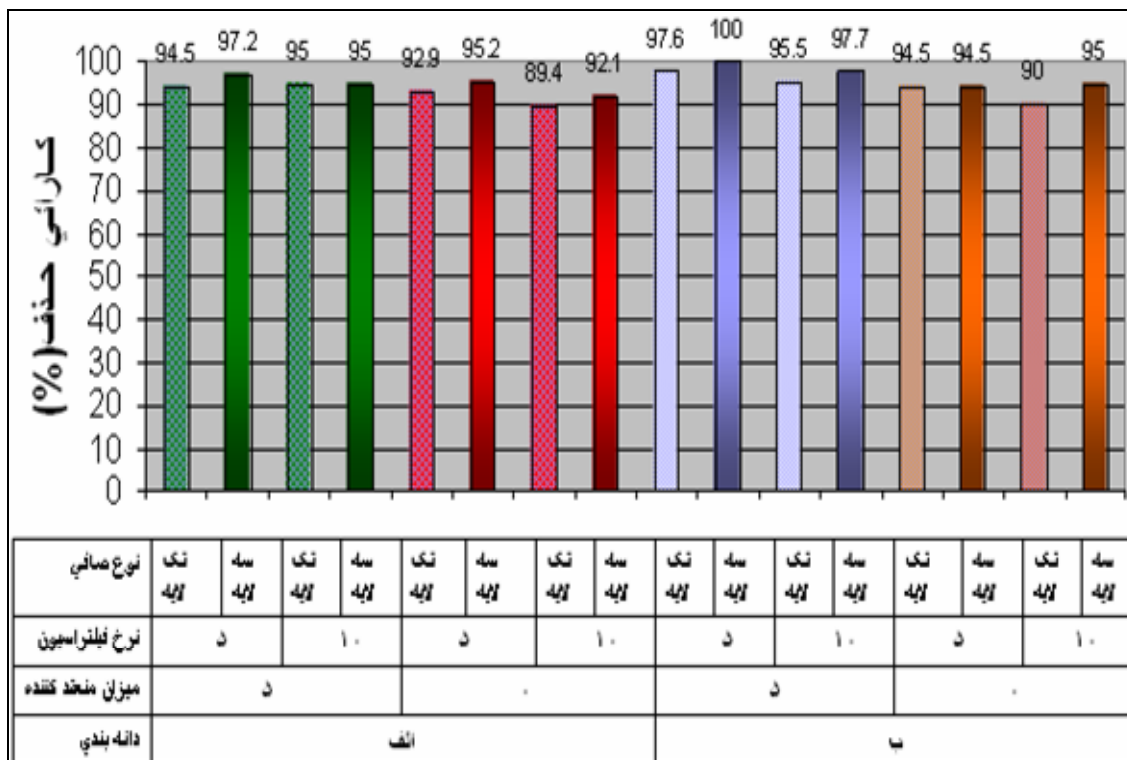
()

*

**



:()



()

: ()

: ()

() ()

()

	()		()	
/	/			
/	/			

: ()

()

	()		()	
/	/			
/	/			

:

: ()

()

	()			
/	/			
/	/			

: ()

()

	()		*	
/	/			
/	/			

*

MC Sorley,R. and D.E.Walter. 1991. Comparison of Soil Extraction Methods for Nematodes and Micro arthropods Agriculture, Ecosystems and Environ .34:201-207.

APHA. 1998. Standard Methods for the Examination of Water and Wastewater. 18th. Edition American Public Health Association. Washington, D.C.

Ding. G, et al. 1995. Effect of Disinfection on the Survival of Escherichia coli Associated with Nematode in Drinking Water" J. Water Supply. 13:3:101.

MC Sorley, R. 2002. Sampling and Extraction Techniques for Nematodes Dept of Entomology and Nematology , University of Florida.

Archive of SID