

Archive of SID

GIS

(GIS)

۰/۴۹

()

/ /

()

() GIS

(Sicat, et al., 2005)

(Chen, et al., 2003)

FAO

/

)

Microstation-DGN

)

(Kalogirou, 2002)

(۱۳۷۳

()

(Caldiz, et al., 2001)

۱۶۳-۳۵

(GPS)⁵

map 76C GARMIN

(GCP)⁶

Ilwis Arcview 3.2a P. C. ArcInfo 3.5.1 AutoCAD 14

M. S. M. S. Excel 2003 Surfer 8.05 academic 3.0

Visual FoxPro 6.0

:

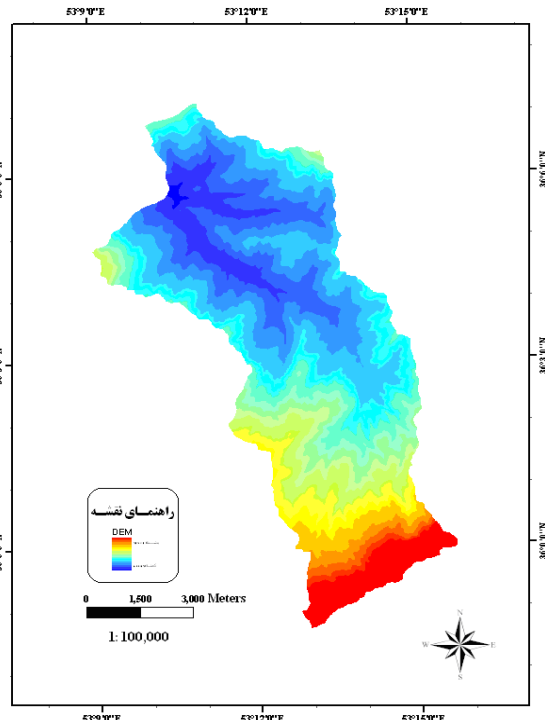
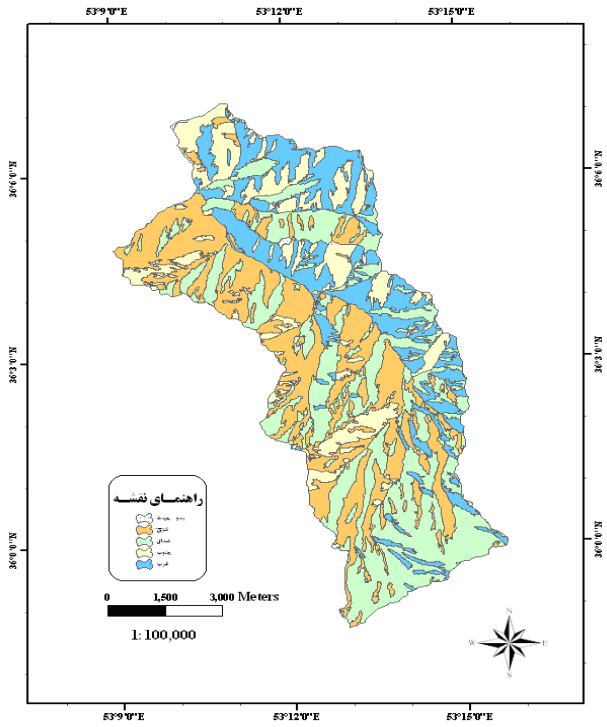
° , ' / " ° , ' / " ° , ' / " ° , ' / "

()
()

% /)
(

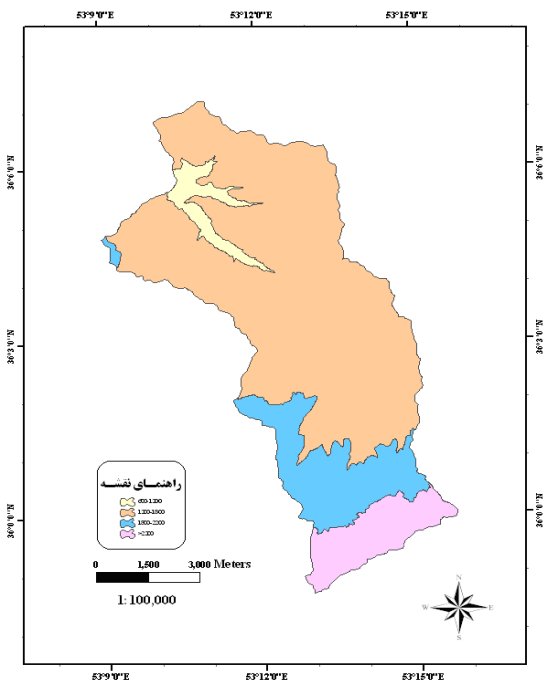
() :

() :

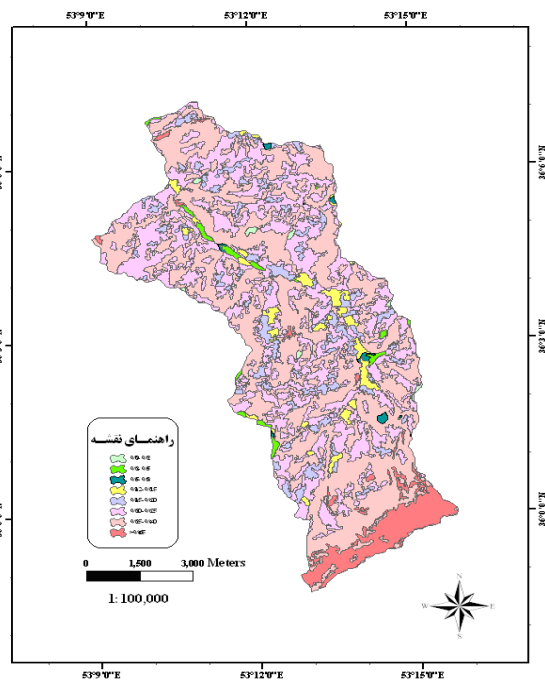


() :

() :



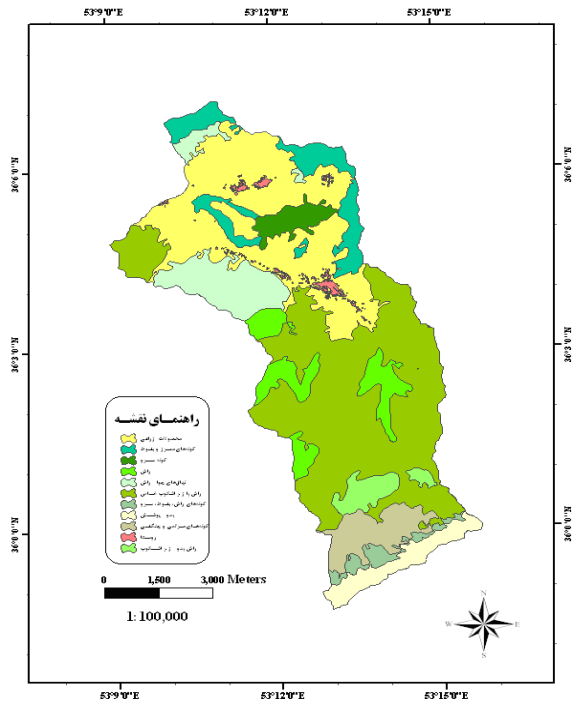
() :



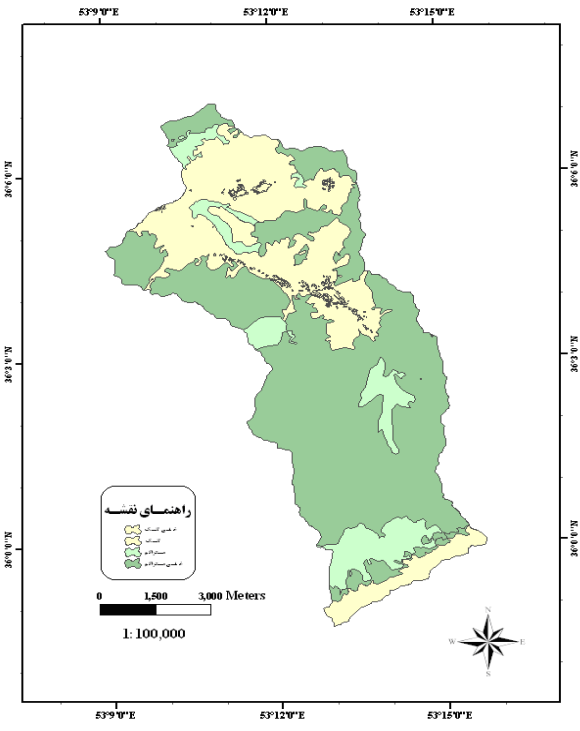
() :

.....

() :



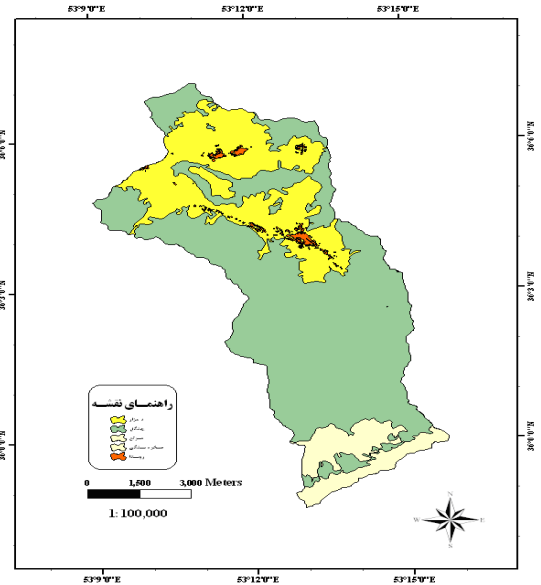
() :



() :

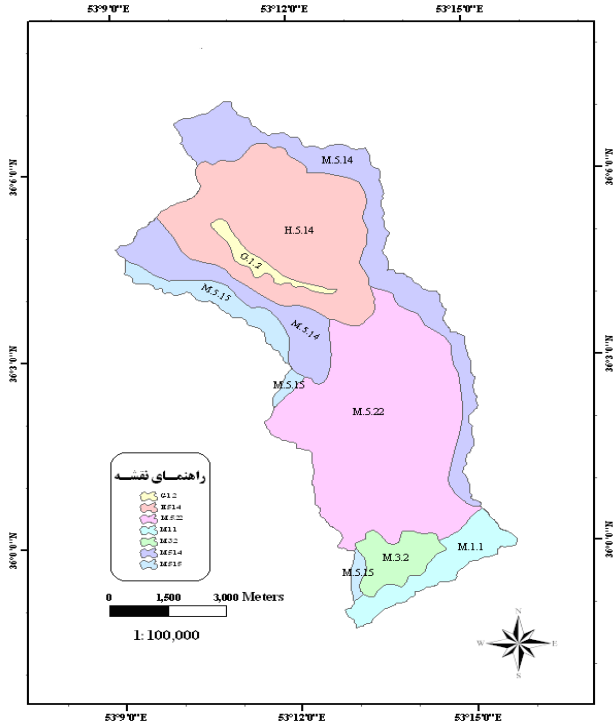
Ilwis
 NDVI
 RGB
 RVI

(DRM)¹⁰ (DTM)⁹
 GIS



() :

()



Ilwis

()

()

همچنین

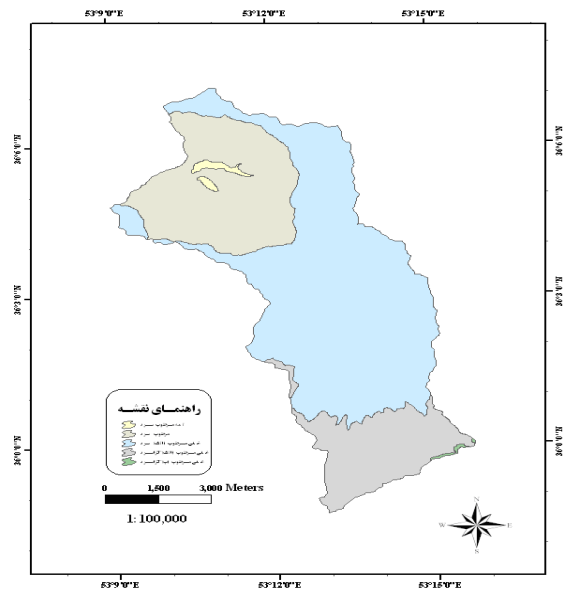
P. C. ArcInfo

):

()

)

()



()

()

)

P. C.

Visual FoxPro

(

ArcInfo

()

):

.....

Ch(1,2,3,4)+Cp(3,4,5,6,7)+dsm(1,2,3)+Es(1,2,3)+ps1(1,
2,3)+pH(1,2,3)+Pg(3,4)+Pd(3,4)+Ps2(1,2,3)+Pdr(3,4)+P
hg(1,2,3)+Pte(1,2,3,4,5,6,7,8,9,10,12)+Cvt(3)+ Si(5,8)

:AR1
:AR2
:AR3
:AR4
:AR5
:I (Cl)
:DF
:H (Clt)
:CH (Clm)
:P **AR1[I-CH-AI-P-B-CA-H]=** Clt(3,4)+ Clm(4,5,6,7,8)+
:B Wc(1,2)+ So(1,2)+ Ct(2,3,4)+ Ch(2,3,4)+ dsm(1,2)+
:CA Es(1,2)+ ps1(1)+ pH(2)+ Pg(1,2)+ Pd(1)+ Ps2(1)+
:AI Pdr(1)+ Phg(1,2)+ Pte(7,8,10,12)+ Cvt(3)+ Si(5,8)
() :Cl **AR2[I-CH-AI-P-B-CA-H]=** Clt(2,3,4)+
() :Wc Clm(3,4,5,6,7,8)+ Wc(1,2,3)+ So(1,2,3)+ Ct(1,2,3,4)+
() :So Ch(2,3,4)+ dsm(1,2)+ Es(1,2)+ ps1(1)+ pH(2,3)+
() :Ct Pg(1,2,3)+ Pd(1,2,3)+ Ps2(1)+ Pdr(1,2)+ Phg(1,2)+
() :Ch Pte(4,7,8,10,12)+ Cvt(3)+ Si(5,8)
() :Cp **AR3[I-CH-AI-P-B-CA-H]=** Clt(1,2,3,4)+
() :dsm Clm(2,3,5,6,7,8)+ Wc(1,2,3)+ So(1,2,3)+ Ct(1,2,3,4,5)+
:Es Ch(1,2,3,4)+ dsm(1,2,3)+ Es(1,2)+ ps1(1,2)+
:Ps1 pH(1,2,3)+ Pg(3,4)+ Pd(2,3,4)+ Ps2(1,2,3)+
:pH Pdr(1,2,3,4)+ Phg(1,2,3)+ Pte(1,2,3,4,5,6,7,8,9,10,12)+
:Pg Cvt(3)+ Si(5,8)
() :Pd **AR4[DF-H-CH-AI-P-B-CA]=** Clt(2,3,4)+
:Ps2 Clm(3,4,5,6,7,8)+ Wc(4)+ So(1,2,3,4)+ Ct(2,3,4)+
:Pdr Ch(2,3,4)+ Cp(4,5,6,7)+ dsm(1,2)+ Es(1,2)+ ps1(1,2)+
:Phg pH(1,2)+ Pg(1,2,3)+ Pd(1,2,3)+ Ps2(1,2)+ Pdr(1,2)+
:Pte Phg(1,2)+ Pte(4,7,8,10,12)+ Cvt(3)+ Si(5,8)
:Cvt **AR5[DF-CH-P-CA-B-H]=** Clt(1,2,3,4)+
:Si Clm(2,3,4,5,6,7,8)+ Wc(4)+ So(1,2,3,4)+ Ct(1,2,3,4,5)+

()

()

99/5

()

Λ/Δ V/1 F/2

9. 5.

C B A

()

()

()

	()	
26	1785/6	
64	4418/1	
5	329/6	
4	257/2	
1	59/4	
100	6850	

		1.	9	Λ	V	6	Δ	F	3	2	1	
.	F/F	3493	3353	.	.	CP
.	6818	33/4	Clt
.	.	.	.	33/4	4936	1758	123/3	Clm
.	6851	.	Wc
.	.	439/7	.	3396	2288	F10/7	199/8	.	22/5	73/8	20/1	So
.	1/9	6849	Ct
.	6851	.	.	Ch
3126	3725	dsm
.	367/9	2138	4345	Es
.	367/9	1918	2078	2488	Ps1
270/4	367/9	3725	.	2488	pH
2758	367/9	1857	110/6	1757	.	Pg
.	367/9	270/4	4456	1757	.	Pd
.	367/9	270/4	6213	Ps2
.	367/9	4355	2128	Pdr
.	367/9	6626	1857	Phg
.	367/9	.	.	4245	.	.	2128	110/6	.	.	.	Pte
.	1786	4906	159/1	Cvt
.	.	.	.	2432	4419	Si

.....

() ()
)
 () ()
 () ()
 : ()

Wc	CP	Clt	Clm	Ct	Ch	dSm	Es	Ps1	pH	Pg	Pd	Ps2	Pdr	Phg	Pte	So
.		۱۷۸۶		۱۷۸۶	.	.	.	۱۶۴۴	۱۷۸۶	۳۷۶	۱۷۸۶		۱۴۹۱	.	۳۷۶	۱۷۵۰
.		۱۶۴۴	۱۴۲	۲۹۵	.		.	.	۲۹۵	۱۷۴۸
.		۳۳	.	۱۲۶۷	۱۷۴۸
۱۷۸۶	۲۹۷/۹	.		۱۷۸۶	.	.	.	۳۳	۱۶۴۴	۲۹۵	.		.	.	۲۹۵	۱۷۴۸
۱۷۸۶		۱۲۶۷	۱۲۶۷		۱۷۸۶	.	.	۱۷۴۸

(:)

این

(Kravchenko and Bullock, 2000)

()

()

()

()

یژ

این نتیجه

(Rezaei et al., 2005)

(Kravchenko and Bullock, 2000)

()

(Chen, et al., 2003)

1-Geographic Information System

2-Central Macedonia

()

4-Land Sat.4 TM

5- Global Positioning System

6- Geographic Control Point

7-Universal Transfer Mercator

8-Digital Elevation Model

9-Digital Temperatura Modela

10-Digital Rainfall Model

11-Fields

12-milimho/cm

Archive of SID

.GIS

()

()

()

()

() (GIS)

Caldiz, D. O., et al. 2001. Agro-ecological zoning and potential yield of single or double cropping of potato in Argentina. *Agricultural and Forest Meteorology*. 109: 311-320. Available online: www.elsevier.com.

Chen, L., et al. 2003. Land use evaluation and scenario analysis towards sustainable planning on the Loess Plateau in China—case study in a small catchment. *Catena*. 54: 303-316. Available online: www.elsevier.com.

Kalogirou, S. 2002. Expert systems and GIS: an application of land suitability evaluation. *Computers, Environment and Urban Systems*. 26: 89-112. Available online: www.elsevier.com.

Kravchenko, N. K. and D. G., Bullock. 2000. Correlation of Corn and Soybean Grain Yield with Topography and Soil Properties. *Agronomy Journal*. 92: 75-83.

Rezaei, S. A., H. Arazani and D., Tongway. 2005. Assessing rangeland capability in Iran using landscape function indices based on soil surface attributes. *Journal of Arid Environments*. Available online: www.elsevier.com.

Sicat, R. S., E. M., Carranza and U.B. Nidumolu. 2005. Fuzzy modeling of farmers' knowledge for land suitability classification. *Agricultural Systems*. 83: 49-75. Available online: www.elsevier.com.

Archive of SID