

*

ayavari@ut.ac.ir
sfaryadi@ut.ac.ir
ahadsetoodeh@yahoo.com

// : // :

(NP,MPS,MNN,CAP)

Aggregate with outlier

(Cook,&Van lier, 1994)

«(Ingegnoli, 2002)

/ /)

.(UNEP, 2007)

(Forman,&Godron, 1986)

(Cook,&Van lier, 1994)

(Forman, 1995)

(Burel, &Baudry, 2003)

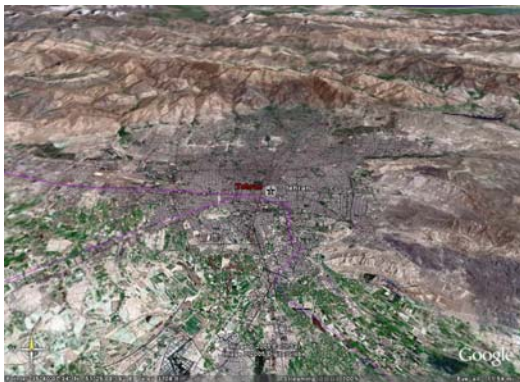
(Tjallingi, 2000)

(Burel, &Baudry, 2003)

() Aggregate with outlier

()

(Forman,1995)



()

(Tjallingii, 2000)

(Jim, et

al,2003)

.....

()

)

(

(

)

)

(

()

:()

(Ingegnoli, 2002)



(Botequilha&Ahren, 2002)



()



(Ingegnoli, 2002).



(Botequilha

(&Ahren, 2002

CAP³, MPS⁶, MNN⁵, NP⁴

ETM

() CAP

() NP

) :

() MNN

() MPS

(McGarigal, & Mark, 1995)

NP MPS

NP MPS

(McGarigal & Mark, 1995)

Fragstats (McGarigal, & Mark, 1995)

()

(White, et al., 1992)

()

)

(

.....

:

-
-
-

CAP (

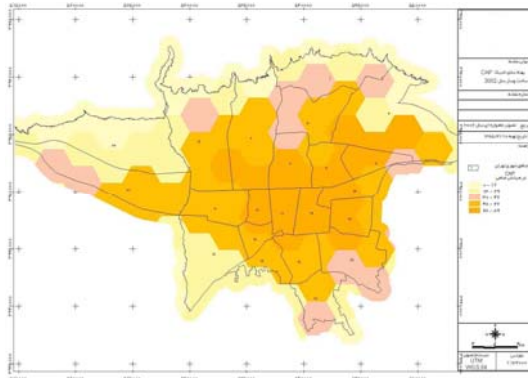
()

(Yavari, et al,

.2007)

()

CAP



CAP : ()

MPS (

/ %

()

)

MPS ()

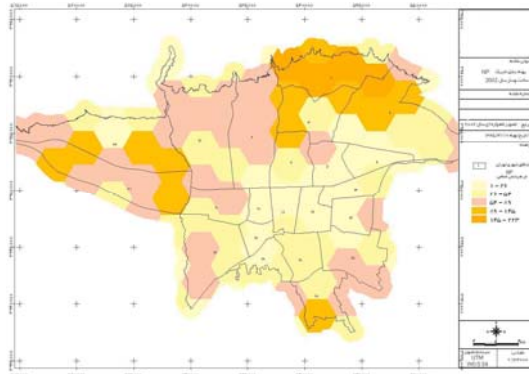
(

MNN (

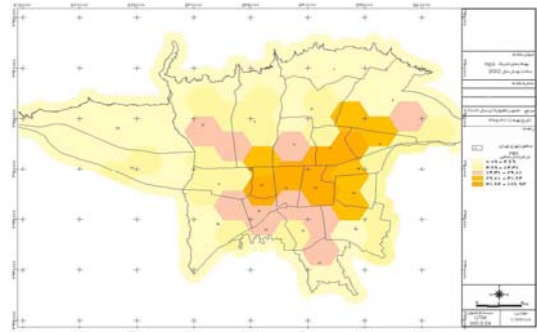
MNN

()

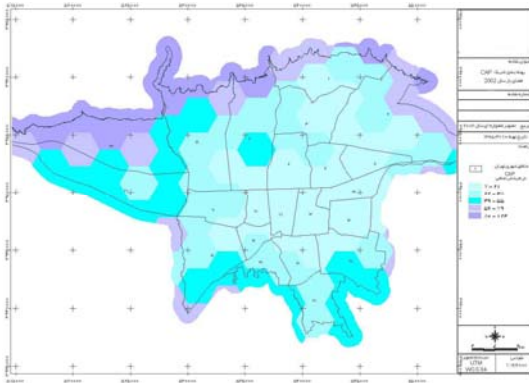
()



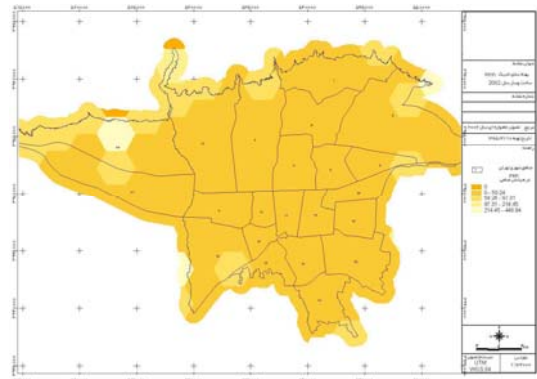
NP : ()



MPS : ()



CAP : ()



MNN : ()

NP (

NP

()

MPS (

%

()

MNN (

MNN MPS

NP ()

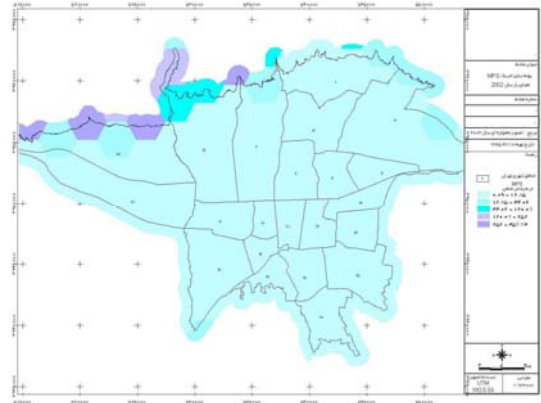
()
NP (

CAP (

.....

()

(Yavari, et al., 2007)



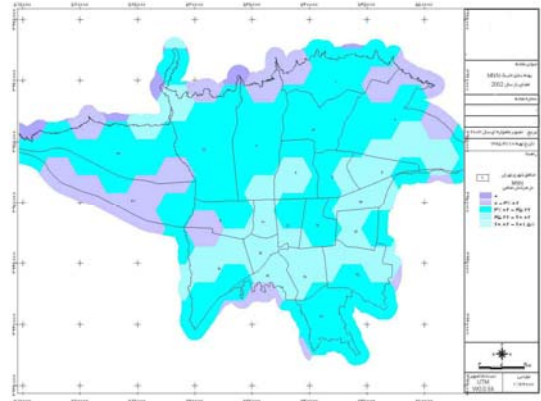
MPS : ()

CAP (

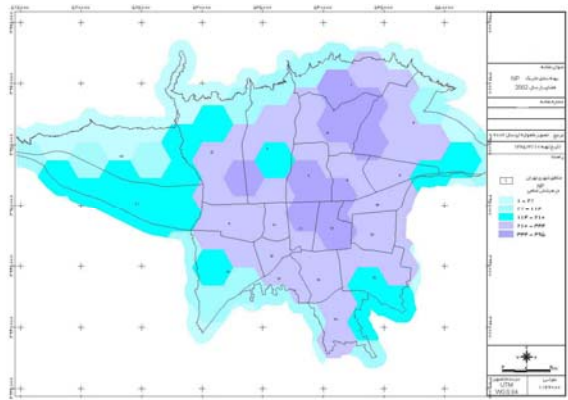
()

CAP

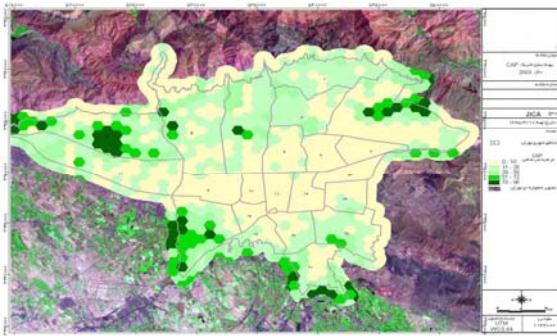
%



MNN : ()

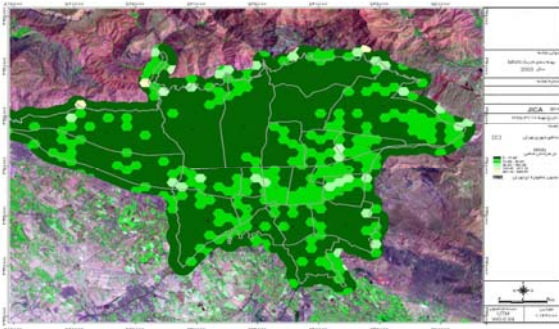


NP : ()



CAP : ()

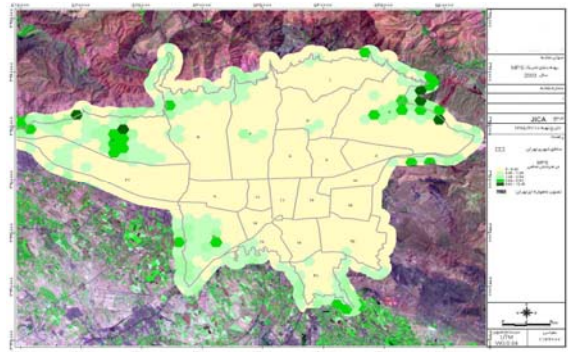
MPS (



MNN : ()

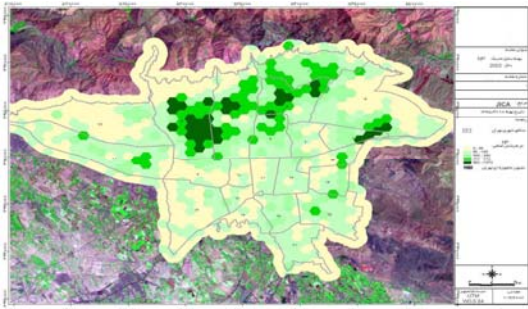
()

() ()

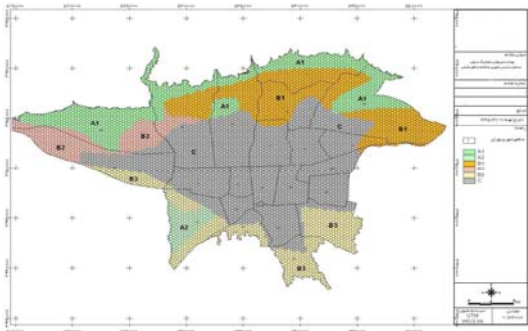


MPS : ()

MNN (



NP : ()



: ()

.....

:()

MNN	MPS	CAP	MNN	MPS	CAP	NP	MNN	MPS	CAP		
<	<	<	<	>	>	<	>	>	>	A ₁	A
<	<	<	<	>	>	<	>	>	>	A ₂	
<				>		<	>	,		B ₁	B
<				>		<	>	,		B ₂	
<				>		<	>	,		B ₃	
<	>	>	>	>	<	<	>	, >	>		C

:A₁

:B₃ A₂

()

A₂

B₁

:B

()

B₂

B₁

B

B₂

:C

()

(Yavari, et al , 2007)

•

•

•

)

(

:A

(Yavari, et al ,

.2007)

:B

(Makhzoumi&Pangetti, 1999)

(Cook &Van lier,1994)

- 1-Refuge network
- 2-Clinical pathology diagnosis
- 3 Class Area Proportion
- 4-Number of Patch
- 5-Mean nearest Neighbor
- 6-Mean Patch Size

Botequilha,A., J.,Ahren .2002.Applying Landscape Ecological Concepts And Metrics In Sustainable Landscape Planning, Landscape And Urban Planning journal,59(2002),65-93

Burel,F., J.,Baudry. 2003. Landscape Ecology Concepts, Methods And Application. Science Publishers .INS: USA.

Cook,E., A.,Vanlier, N.,Hubert .1994. Landscape Planning & Ecological Networks .Amsterdam: Elsevier pub

Forman,R.T.T. 1995. Some general principles of landscape and regional ecology, Landscape Ecology, vol. 10 no. 3 pp. 133-142 (1995) Amsterdam : SPB Academic Publishing

Forman, R.T.T.and M.,Godron. 1986. Landscape Ecology. John Wily & Sons: New York, USA

Ingenholi,V. 2002. Landscape Ecology: A widening Foundation. New York: Springer

Jim,C.Y, S.,Sophia, C.,Chen .2003. Comprehensive greenspace planning based on landscape ecology principles in compact Nanjing city, China Landscape and Urban Planning Volume 65, Issue 3 , Pages 95-116

McGarigal,K. ,B. ,Marks.1995. Fragstats: Spatial pattern analysis program for quantifying landscape structure. Reference manual. For. Sci. Dep. Oregon State University. Corvallis Oregon 62 p.+ Append

Makhzoumi,J. and G. ,Pungetti.1999. Ecological landscape design and planning Routledge NY, USA

Tjallingii,S.P. 2000. Ecology on the edge: Landscape ecology between town and country, Landscape and Urban Planning, 48 (2000), P 103 – 119, Elsevier

UNEP .2007.Global Environmental Outlook GEO4 Environment for development. United Nations Environment Programme. 540p

White,D., A.J.,Kimerling, and W.S.,Overton.1992. Cartographic and geometric components of a global sampling design for environmental monitoring.Cartography and Geographic Information Systems 19(1):5-22.

Yavari,A.R. ,A.,Sotoudeh, P.,Parivar.2007. Urban Environmental Quality and Landscape Structure in Arid Mountain Environment,International Journal of Environmental Research 1(4): 325-340, Autumn 2007