

ghendi@ut.ac.ir
fghazban@ut.ac.ir
shkokabi@yahoo.com

Pb(85%)>Zn(84%)>Cd(62%)>As(47%)>Mn(35%)>Ni(34%)>Cu(21%)

(Helling, et al.,1990)

Yang 2005)

(& Rose,

(Stecko .

and Bendell-Young,2000)

E-mail: akarbasi@ut.ac.ir

()

Peterson Grab

()

:()

	()	(cm)		
	/		o , o , o , o , o , o , o , o , o , o , o , o , o , o , o , o , o , o ,	-	

Archive of SID

() ()

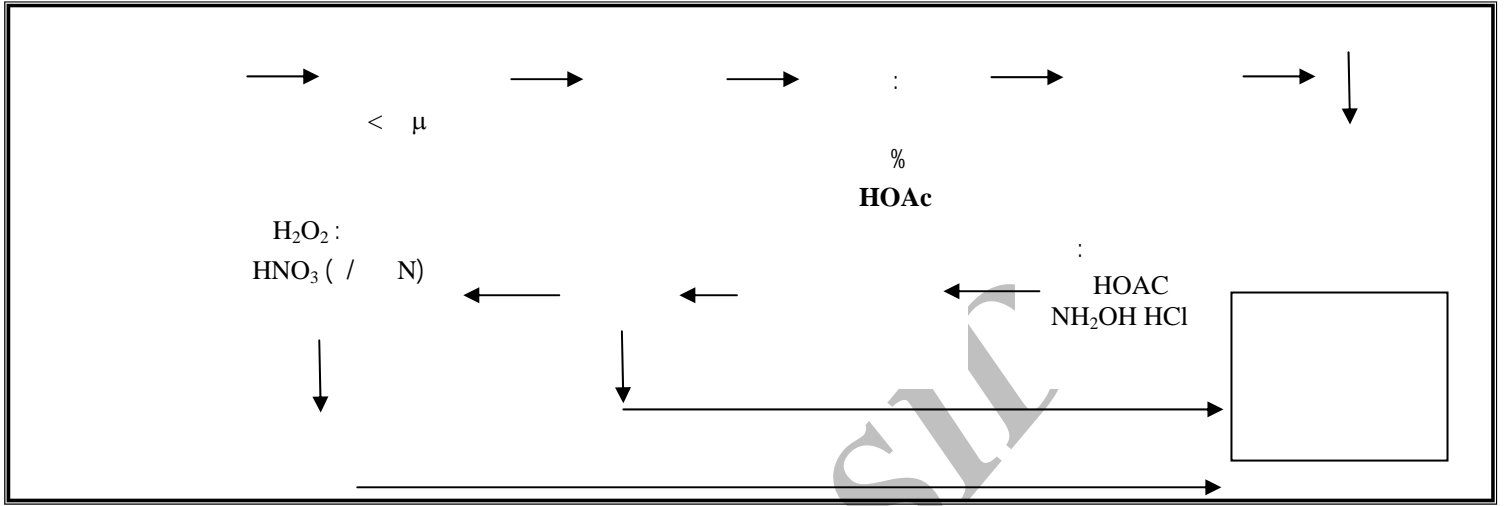
- HCl - HNO₃ HClO₄

()

HF

()

(LOI)



()

Perkin-Elmer-

Bn_x

(:)

409, AAS

(Karbassi, et al., 2008; Muller , 1979)

Correlation factor

()

MVSP

()

(I_{po11})

(I_{geo})

(Karbassi, et al.,2008)

()

$$I_{geo} = \text{Log}_2 [Cn / (1.5 \times Bn_y)]$$

$$I_{po11} = \text{Log}_2 [Cn / Bn_x]$$

I_{geo}

)

I_{po11}

:

Cn

(

Bn_y

Pb(85%)>Zn(84%)>Cd(62%)>As(47%)>Mn(35%)
>Ni(34%)>Cu(21%)

Zn(73%) > Pb(66%) > Cc(62%) > Mn(33%) > Ni(30%)
 > As(13%) > Cu(9%)

I_{po11} I_{geo} : ()

I_{po11}	I_{geo}	I_{po11}	I_{geo}
	>		
	<		

: ()

(MG/KG)	%	%	%	(MG/KG)	%	(MG/KG)	%	(MG/KG)
/				/		/		/
/				/		/		/
/				/		/		/
/				/		/		/
/				/		/		/

.(& Horowitz, 1985)

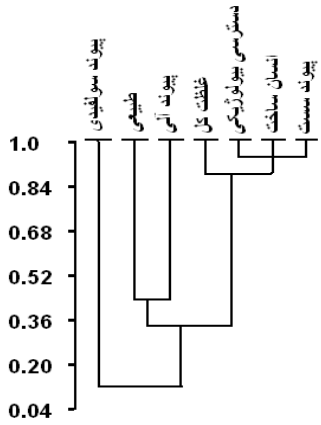
As(31%) > Zn(8%) > Cu(7%) > Pb(6%) > Ni(2%) > Mn(1%)

()

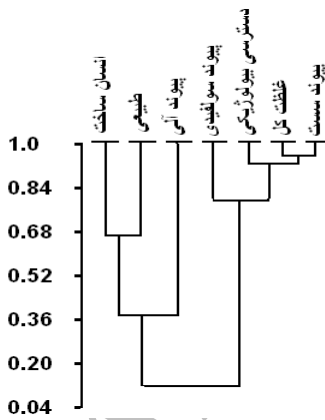
Pb(12%) > Cu(5%) > Zn&As (4%) > Mn&Ni(2%) > Cd(0%)

.()

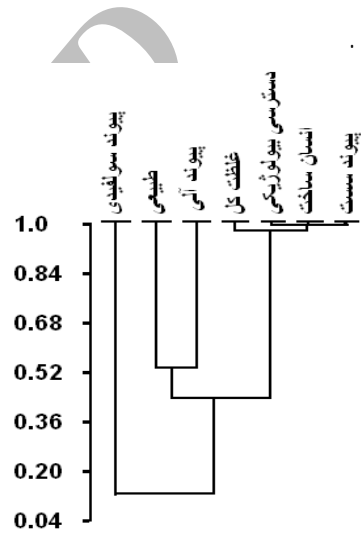
PbS₂



() :



() :

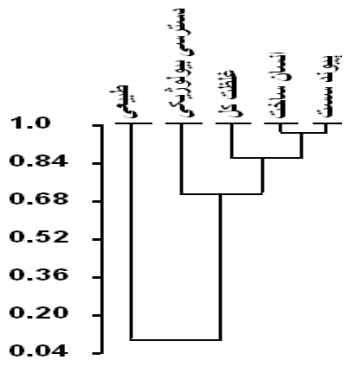


() :

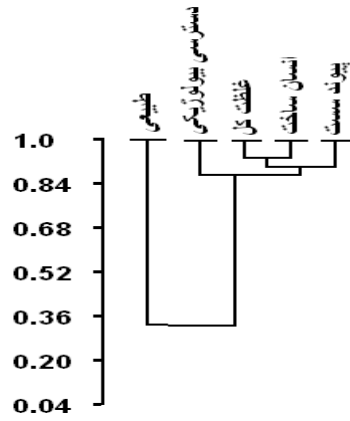
() .

PbS₂

()

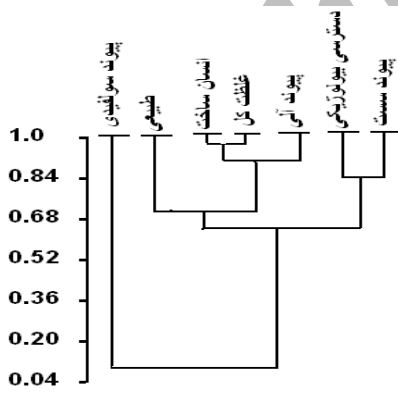


()



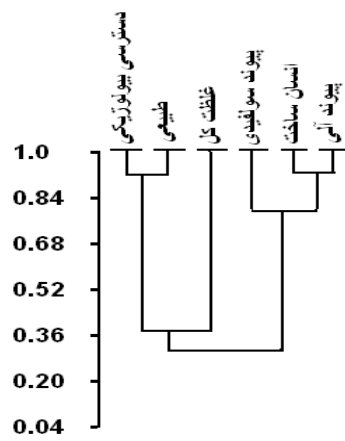
()

()



()

()



()

" " " "

I_{poll}

I_{geo} () ()

I_{poll} I_{geo}

I_{geo}

:()

As I_{geo}	Zn I_{geo}	Cu I_{geo}	Cd I_{geo}	Pb I_{geo}	Mn I_{geo}	Ni I_{geo}	
/	/	/	/	/	/	/	
/	/	/	/	/	/	/	
/	/	/	/	/	/	/	
/	/	/	/	/	/	/	
/	/	/	/	/	/	/	
/	/	/	/	/	/	/	
/	/	/	/	/	/	/	
/	/	/	/	/	/	/	
/	/	/	/	/	/	/	
/	/	/	/	/	/	/	

I_{poll}

:()

As I_{poll}	Zn I_{poll}	Cu I_{poll}	Cd I_{poll}	Pb I_{poll}	Mn I_{poll}	Ni I_{poll}	
/	/	/	/	/	/	/	
/	/	/	/	/	/	/	
/	/	/	/	/	/	/	
/	/	/	/	/	/	/	
/	/	/	/	/	/	/	
/	/	/	/	/	/	/	
/	/	/	/	/	/	/	
/	/	/	/	/	/	/	
/	/	/	/	/	/	/	
/	/	/	/	/	/	/	
/	/	/	/	/	/	/	

Igeo

:()

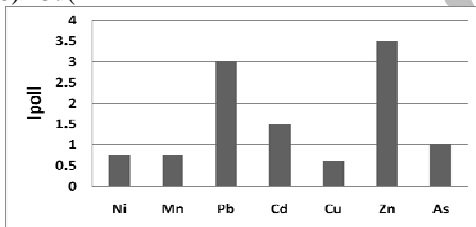
		Igeo	(Igeo)	Igeo	Igeo	
				<	/	Ni
					/	Mn
					/	Pb
					/	Cd
					/	Cu
					/	Zn
					/	As

Ipoll

:()

		Ipoll	(Ipoll)	Ipoll	Ipoll	
				<	/	Ni
					/	Mn
					/	Pb
					/	Cd
					/	Cu
					/	Zn
					/	As

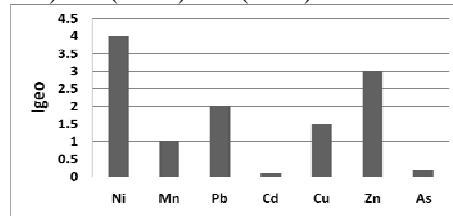
1.425) >As(1.072)>Ni(0.69)>Mn(0.649)>Cu(0.341)
Pb(3.148)>Cd(



(Ipoll) :()

Zn (3.222) >Cu(1.524)>Pb(1.903)> Mn(0.385)>

Ni(4.018)> As(0.075)> Cd(-0.29)



(Igeo) :()

Zn Cu Co Cd V Fe Pb Mn Ni

Alloway, B.J. 1990. The origin of heavy metals in soils. Springer Verlag, N.Y.

Chester, R., M., Hughes. 1976. A Chemical Technique for the Separation of Ferromanganese Minerals, Carbonate Minerals and Adsorbed Trace Elements from Pelagic Sediments. *Chemical Geology*, v.2, pp.242-262.

Forstner, U. 1990. Inorganic sediment chemistry and elemental speciation. In *Sediments: Chemistry and Toxicity of In-Place Pollutants* (Baudo, R., Giesy, J., and Muntau, H., Eds), pp. 61-97. CRC Press Inc, Boca Raton, FL

Gupta, S.K., Chen, K.Y. 1975. Partitioning of Trace Metals in Selective Chemical Fractions of Nearshore Sediments. *Environmental Letters*, v.10, pp.129-158.

Helling, D., et al. 1990. *Sediments and Environmental Geochemistry*. Springer Verlag, New York

Horowitz, A. 1985. A Primer on sediment-trace metal chemistry. U.S. Geological Survey water supply, paper No.2277.

Karbassi, A.R. 1989. *Geochemistry & Magnetic susceptibility of Riverine, Estuarine & Marine sediments*. Ph.D. thesis, Mangalore University, 196p.

Karbassi, A.R., et al. 2008. Metal pollution assessment of sediment and water in the Shur River. *Environ. Monit. Assess.*, v.147, 107-116.

Muller, V. 1979. *Geochemical index for pollution assessment in aquatic environment*. Springer Verlag, N.Y.

Stecko, J.R.P. and L.I., Bendell-Young. 2000. Uptake of ¹⁰⁹Cd from sediments by the bivalves *Macoma balthica* and *Protothaca staminea*. *Aquatic Toxicology*, 47(3), 147-159.

Yang, H. and N., Rose. 2005. Trace Element Pollution Records in Some U.K Lake Sediments, Their History, Influence Factors and Regional Differences. *J. Environment international*, v.31, pp.63-75