

()

*

(/ / : / / :)

ANSYS 5.6

R2 = /

« » « »

« » « »

« »

/

/

« »

:

()

()

(.)

()

((:

« »

()

(

% (

)

(.)

(.)

()

(.)

)

(.

(.)

()

Archive of SID

(:

)

(

(

(

(.)

()

()

()

2.Polariscope
3.Photoelastic

1.Orthotropic

* *

:()

$$\sigma_1 - \sigma_2 = \frac{Nf_\sigma}{t} \quad ($$

$$f_\sigma = \frac{F}{N \times W}$$

W (N)

F

(mm)

f_σ

t (MPa)

σ_2 σ_1

N (mm)

(N/mm)

f_σ ()

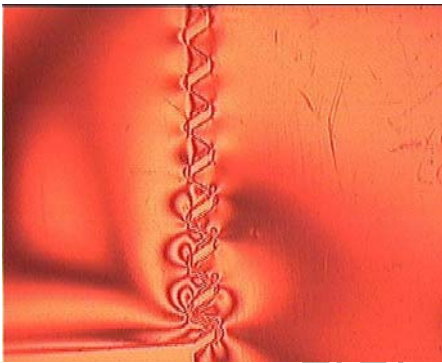
$\frac{F}{A}$ σ_1

$\sigma_2 =$

()

f_σ

/ MPa



()

Quadrilateral 8

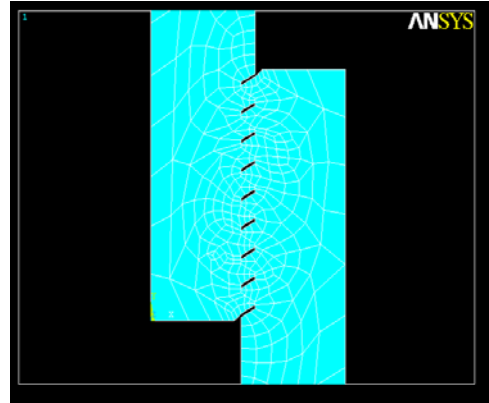
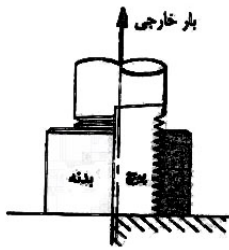
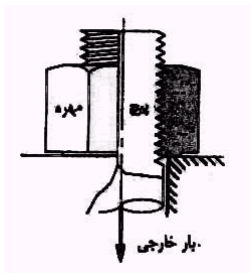
Plane 82

node

| mm | kN/mm | MPa |
|----|-------|-----|
| / | / | / |

CNC

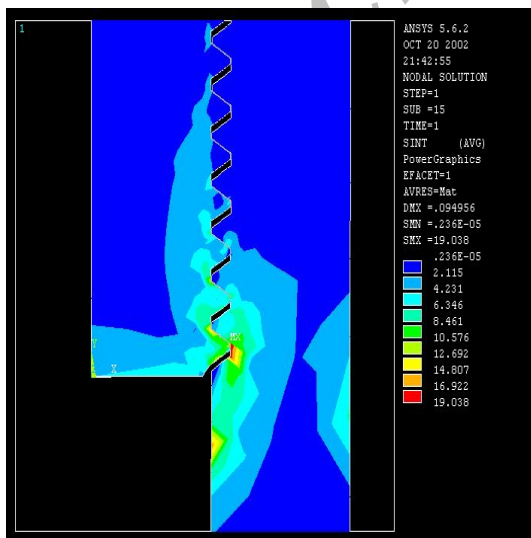
(Sparse)



ANSYS. 5.6

(Targe 169)

(Conta 172)



1 M Pa

()

X

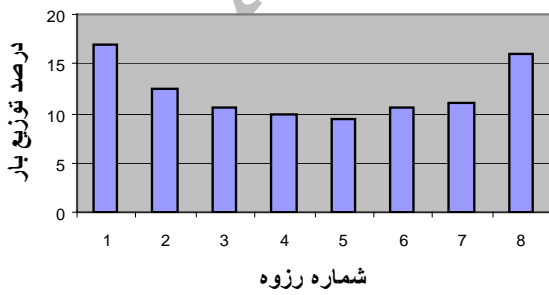
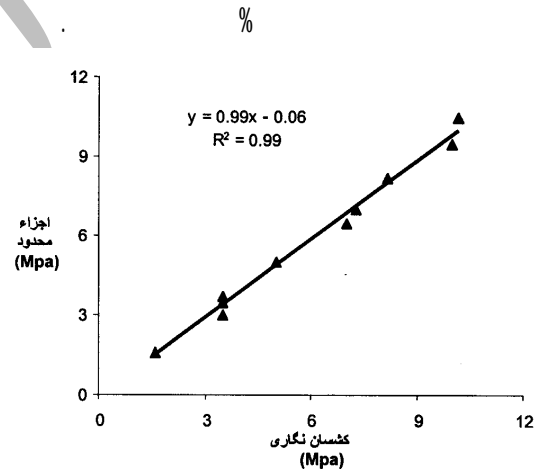
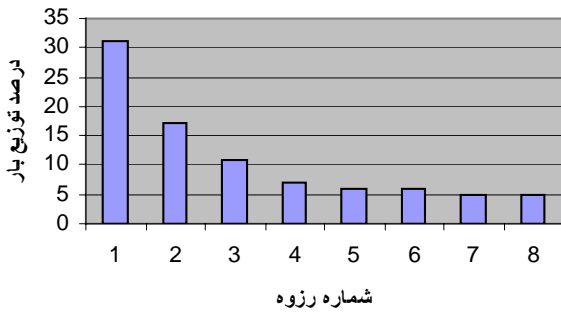
()

(.)

« » « »

»

« SID »



1.Axisymmetric

(E_n)

% /

(E_b)

% /

% /

% /

% /

(E_n)

%

(E_b)

% /

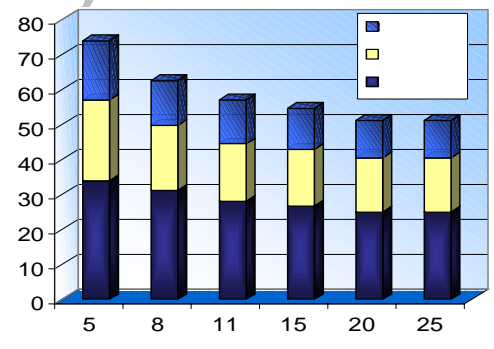
% /

% /

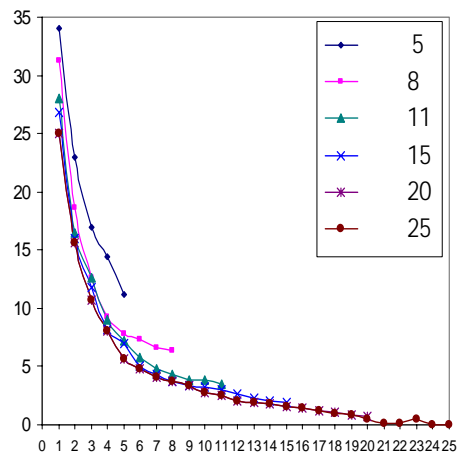
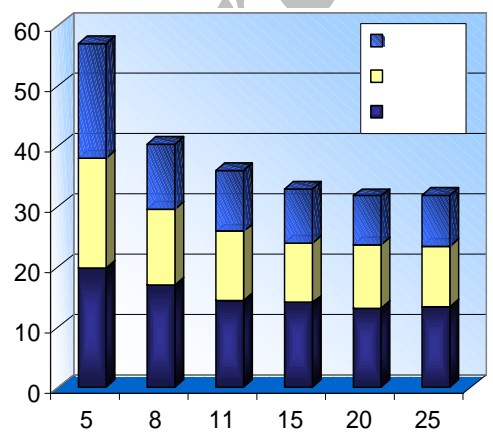
% /

% /

« »



« »

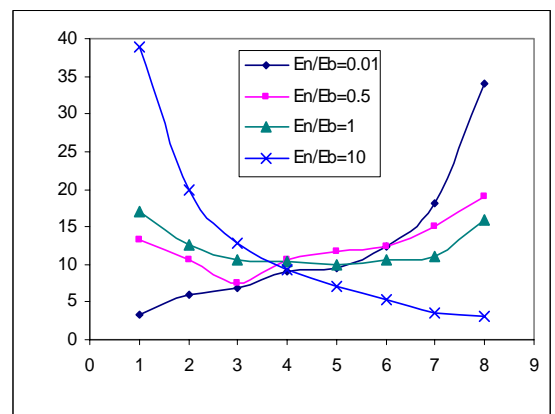
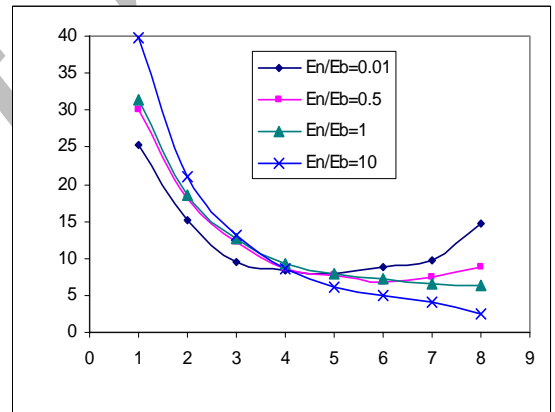
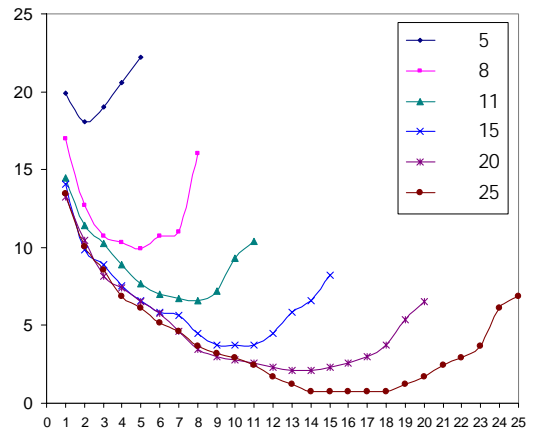


« »

« »

(E_b)

(E_n)



REFERENCES

- Bradley, T.L., T.J., Lardner, & B.B. Mikic. 1971. "Bolted joint interface pressure for thermal contact resistance," Trans. ASME. Ser. E.J. APPL. Mech., 38(2), 542-545.
- Bretl, J.L., & R.D., Cook. 1979. "Modeling the load transfer in threaded connections by the finite element method", International Journal for Numerical Methods in Engineering, Vol. 14, No. O, PP. 617-624, February.
- Dally J.W. & W.F. Riley. 1978. Experimental Stress Analysis, 2nd Edition, New York, Mc Grow Hill Book Company.
- Englund, R.B. & D.H. Johnson. 1999. "A finite element analysis study of non – linear behavior in a bolted connection", ASME. International Mechanical Engineering Congress and Exposition, Nashville, TN, 15.
- Englund, R.B. & D.H. Johnson. 1997. "Finite element analysis of a threaded connection compared to experimental and theoretical research", Journal of Engineering Technology, Vol., 14, No. 2, pp. 42-47.
- Johnson, D.H., & B. R. Englund, . 2000. "Three-dimensional modeling of a bolted connection", 9th International ANSYS conference.
- Sawa, T., H. Kumano & T. Morohoshi. 1996. "The Contact stress in a bolted joint with a threaded bolt" Journal of experimental mechanics.
- Wang, W., & K.M., Marshek, . 1995. "Determination of the load distribution in a threaded connector having dissimilar materials and varying thread stiffness, "Journal of engineering for industry, Vol 117, pp1.
- Yazawa, S., & K., Hongo. 1988. "Distribution of load in the screw thread of a bolt- nut connection subjected to tangential forces and bending moments." JSME International journal, Series I, Vol. 31, No.2, pp. 174-180.

Archive of SID