

()

//

KSC700

()

KSC647 KSC704

()

%

(SP1042 OSSK602 OSSK713)

.()

.()

(.)

SC704

(.)

(Dudley, 1988)

()

x

()

(.)

(KSC704 KSC700 KSC647)

SC704

- | | |
|-------------|-------------|
| 1. OSSK 713 | 2. OSSK 602 |
| 3. OSSK 596 | 4. OSSK 617 |
| 5. OSSK 644 | 6. OSSK 659 |
| 7. OSSK 552 | 8. ALPOS |
| 9. BC 678 | 10. BC 666 |
| 11. BC582 | 12. BC 682 |
| 13. BC 554 | 14. BC 5982 |
| 15. SP1042 | 16. SP1043 |
| 17. DUNAV | 18. KSC700 |
| 19. KSC647 | 20. KSC704 |

Archive of SID

SC647)

.()

SC704

()

(SC700

%

.()

SC700

										%
										%
										%
/ **	/ **	/ **	/ ns	/ **	/ **	/ **	/ **	/ **	/ **	/ **
/	/	/	/	/	/	/	/	/	/	()
/ **	/ **	/ **	/ *	/ **	/ **	/ **	/ **	/ **	/ **	/ **
/ ns	/ ns	/ ns	/ ns	/ **	/ **	/ *	/ **	/ ns	/ ns	
/ **	/ **	/ **	/ **	/ **	/ **	/ **	/ **	/ **	/ **	/ **
/ *	/ **	/ **	/ **	/ ns	/ **	/ ns	/ **	/ **	/ ns	
/ *	/ **	/ ns	/ ns	/ ns	/ ns	/ **	/ **	/ **	/ ns	x
/	/	/	/	/	/	/	/	/	/	%CV
										: ns
										: ** *

										%)%
										()	()
										()	()
/ a	/ a	/ a	/ a	/ b	b	/ a	/ a	/ b	/ b		
/ b	/ b	/ b	/ a	/ a	a	/ b	/ b	/ a	/ a		
cd	/ bcde	/ ab	/ bcde	/ bcde	/ a bcde	/ cd	/ fgh	/ a	/ a	OSSK713	
bcd	/ bcde	/ bcdefg	/ bcde	/ abc	/ a	/ abcd	/ efgh	/ abc	/ ab	OSSK 602	
bcd	cdef	/ abcde	/ abc	/ abcde	/ bcdef	/ ab	/ fgh	/ abc	/ ab	OSSK596	
bcd	/ cdef	cdefg	/ bcde	/ abc	/ abcd	/ a	/ gh	/ ab	/ ab	OSSK617	
bcd	/ abcd	abcd	/ ab	/ cdef	/ defg	/ cd	cd	/ abc	/ bc	OSSK644	
bcd	/ abc	/ abcd	/ bcd	/ ef	/ defg	/ cd	/ def	/ bc	/ cd	OSSK659	
de	ef	/ fg	ef	/ cdef	efgh	/ abc	/ fgh	/ abc	/ abc	OSSK552	
e	/ abcde	/ h	/ g	/ g	/ I	/ e	/ j	/ d	/ d	ALPOS	
bcd	/ cdef	/ abc	/ cde	/ abcd	/ cdefg	/ cd	/ efgh	/ abc	/ abc	BC678	
bc	/ def	/ bcdefg	/ de	/ abcd	/ bcdef	/ bcd	/ efgh	/ a	/ ab	BC666	
bcd	/ bcde	/ fg	/ cde	/ def	/ abcd	/ cd	/ h	/ a	/ ab	BC582	
bc	/ cdef	/ defg	/ f	/ f	ab	/ d	/ i	/ bc	/ cd	BC682	
bcd	/ cdef	/ g	/ cde	/ cdef	/ hi	bcd	/ bc	/ abc	/ bc	BC554	
de	/ def	fg	/ ef	/ ef	gh	/ cd	/ de	/ abc	/ abc	BC5982	
a	/ abcd	/ a	/ a	/ abc	/ abc	/ abcd	/ de	/ a	/ ab	SP1042	
bc	/ cdef	fg	/ de	/ abcde	/ abcdef	/ abcd	/ def	/ abc	/ abc	SP1043	
b	/ a	abc	/ abcd	/ cdef	/ defg	/ cd	/ cd	/ abc	/ abc	DUNAV	
bc	/ def	/ abcdef	ef	/ ab	/ fgh	/ abc	/ b	/ abc	/ abc	KSC700	
bcd	f	/ efg	/ bcde	/ a	/ hi	/ abcd	/ a	/ abc	/ abc	KSC647	
bcd	/ ab	/ abcd	/ cde	/ abc	/ cdefg	/ bcd	/ efgh	/ c	/ abc	KSC704	

:

()

()

(SC700) (SC647)

/ / ()

/) (/)

() (%

(OSSK 617)

() (OSSK 596)

SC647 SC700

(/ /) SC700 SC647 ()

(SP1042)

()

%

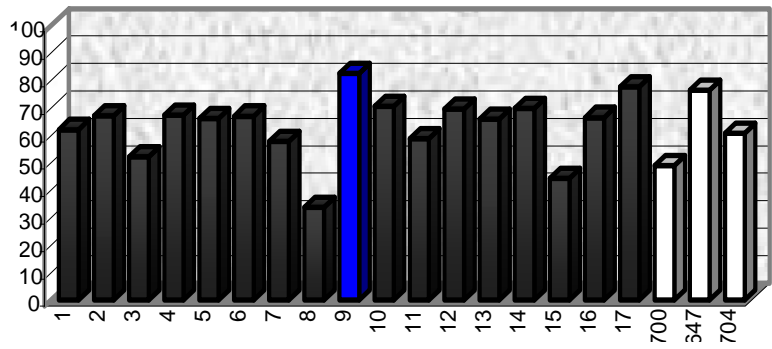
()

(SP1042)

%

/

()



(Perez- Vela Squez et al., 1995)

(SC700)	(SP1042)	(ALPOS)	%	/	(OSSK602)
		%			
	/	/			(DUNAV)
					/ SC704
					704
	/	/			704
					(/)
					/
()		() SC647
				() OSSK 552
(BC 678)	/	/			
	()			(DUNAV)
				BC	OSSK
					SP
			%		
BS16					
		ETO			
	()			

/	**	/	**	/	**	/	**	/	**	/	ns
/	**	/	ns	/	**	/	*	/	**		
/	**	/	**	/	**	/	**				
/	**	/	ns	/	**						

/ **	/ **			
/ ns				
		: ns	% %	: ** *

(r= /) (r= /) () (r = /) (r = /) (r = /) (r = /) (r = /) ()

REFERENCES

- Allard, R. W. & A. D. Bradshaw. 1964. Implication of genotype- environmental interactions in applied plant breeding. *Crop Sci.* 4: 503-508.
- Dudley, J. W. 1988. Evaluation of maize populations as source of favorable alleles. *Crop Sci.* 28:486-491.
- F. A. O. Production year book. 1998. Food and Agricultural Organization of the United Nation, Rome, Italy. 51:209P.
- Hallauer, A. R. 1978. Potential of exotic germplasm for maize improvement. In W. L. Walden (ed). *International Maize sym.* Mc Grow- Hill, New York. 229-247 P.
- Perez- Vela Sques. J. C., H. Ceballos, S. Pandey & D. Amaris. 1995. Analysis of diallel Crosses among Colombian landraces and improved populations of maize. *Crop Sci.* 35:572-578.
- Sprague, G. F. & J. W. Dudley. 1988. *Corn and Corn Improvemeart.* Third edition. American Society of Agronomy. 686 P.
- Stojisin, D. & L. W. Kannenberg. 1995. Evaluation of maize populations as Source of favovable alleles for improvement of two single- cross hybrids. *Crop Sci* 35:1353-1359.