

()

(Secale cereale L.)

* ..

(// : // :)

Archive of SID

(LAI)

(CGR)

(DMA)

(*Secale cereale L.*)

(.)

CGR

)

(

()

.()

.() .

.()

(Chenopodium album)

.()

(Abutilon theophrasti)

.()

()

()

.()

()

.()

()

()

.()

.()

(Vaccaria. Sp)

()

CGR

()

.

(*Secale cereale* L.)

:

()

)

)

(

(

()

()

(*Lolium multiflorum*)

()

(LAI)

(CGR)

(TDM)

()

()

)

(

(GDD=)

x

(/)

LICOR-3100A Leaf Area Meter

(GDD= ())

()

- -

()
()

GDD = (/ (+) -)
()

)

()

(.)

(DMA)

(CGR)

(LAI)

(DMA)

(LAI)

(CGR)

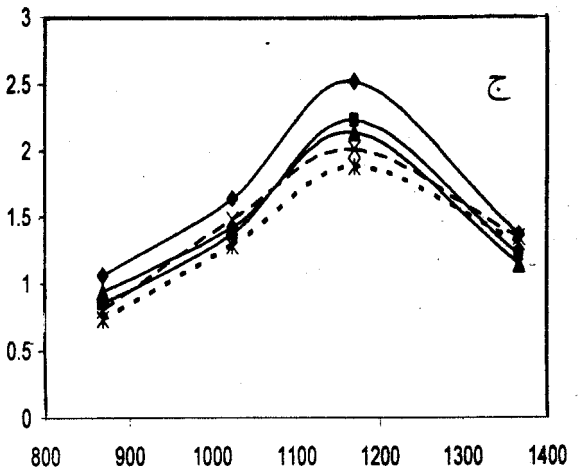
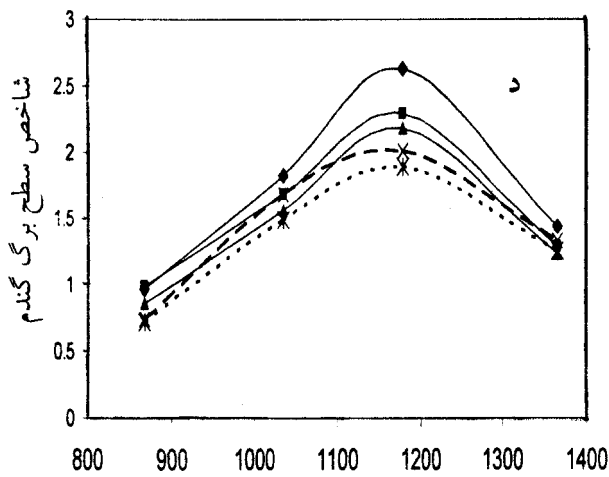
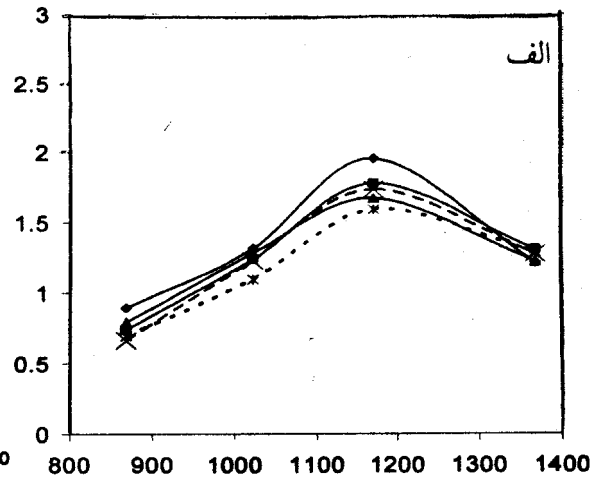
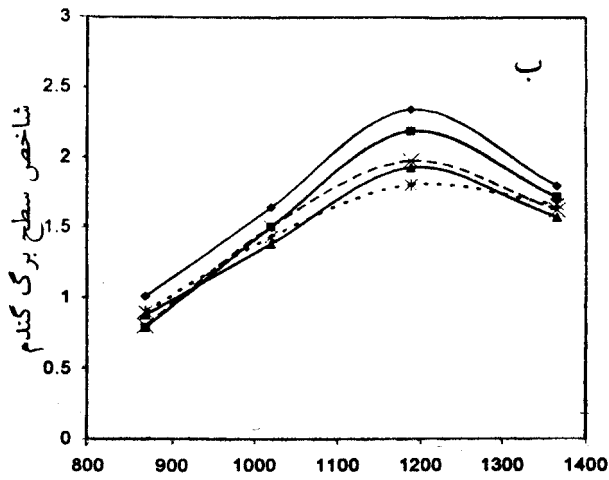
()

(.)

-
1. Growing Degree Days
 2. Dry Matter Accumulation
 3. Leaf Area Index
 4. Crop Growth Rate

()
()

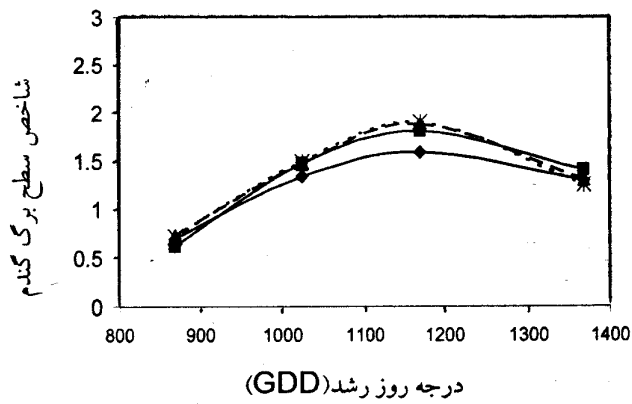
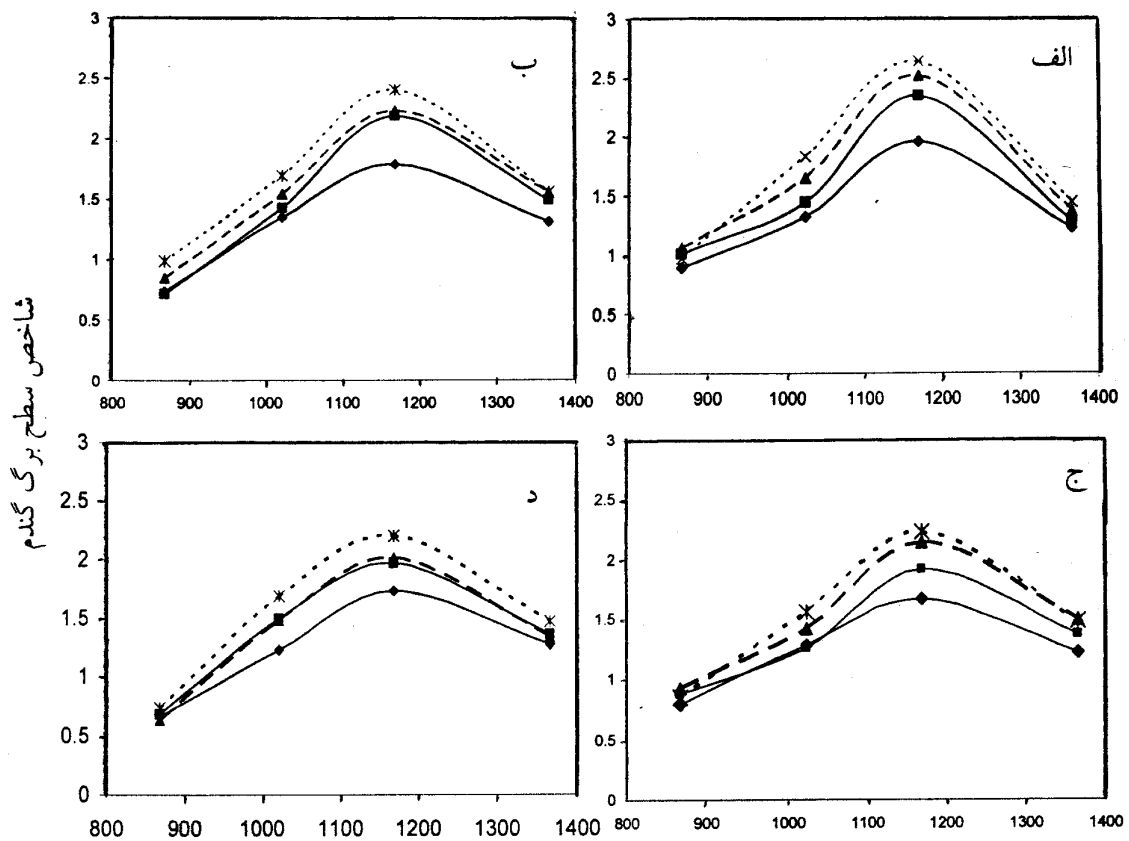
()



درجه روز رشد (GDD)

- مغز بوته چاودار (Solid line with diamond markers)
- بوته چاودار ۱۰ (Solid line with square markers)
- بوته چاودار ۳۰ (Solid line with triangle markers)
- بوته چاودار ۵۰ (Dashed line with 'x' markers)
- بوته چاودار ۷۰ (Dotted line with asterisk markers)

() () () ()



گندم ۳۵۰ بوته (solid line with diamond markers)
 گندم ۴۵۰ بوته (solid line with square markers)
 گندم ۵۵۰ بوته (dashed line with triangle markers)
 گندم ۶۵۰ بوته (dashed line with cross markers)

() () () ()

()

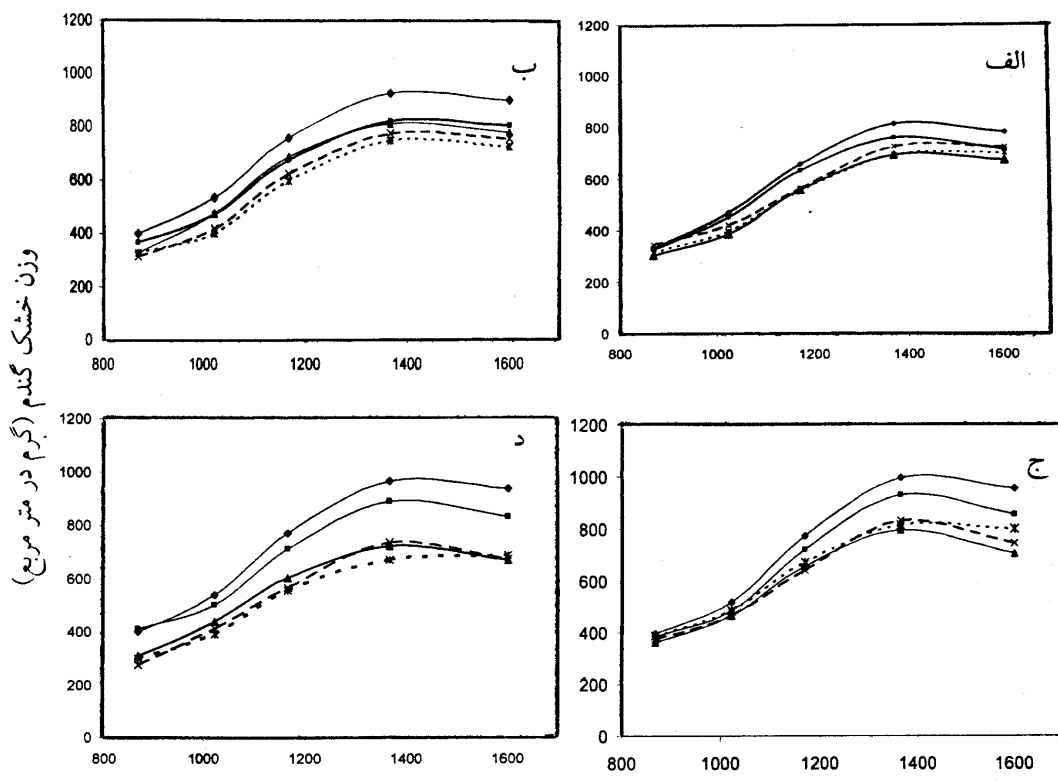
()

()

()

()

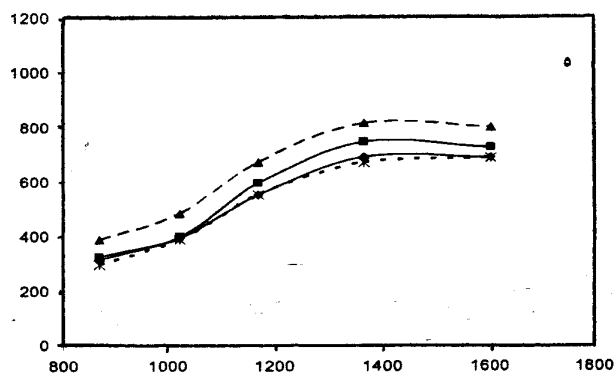
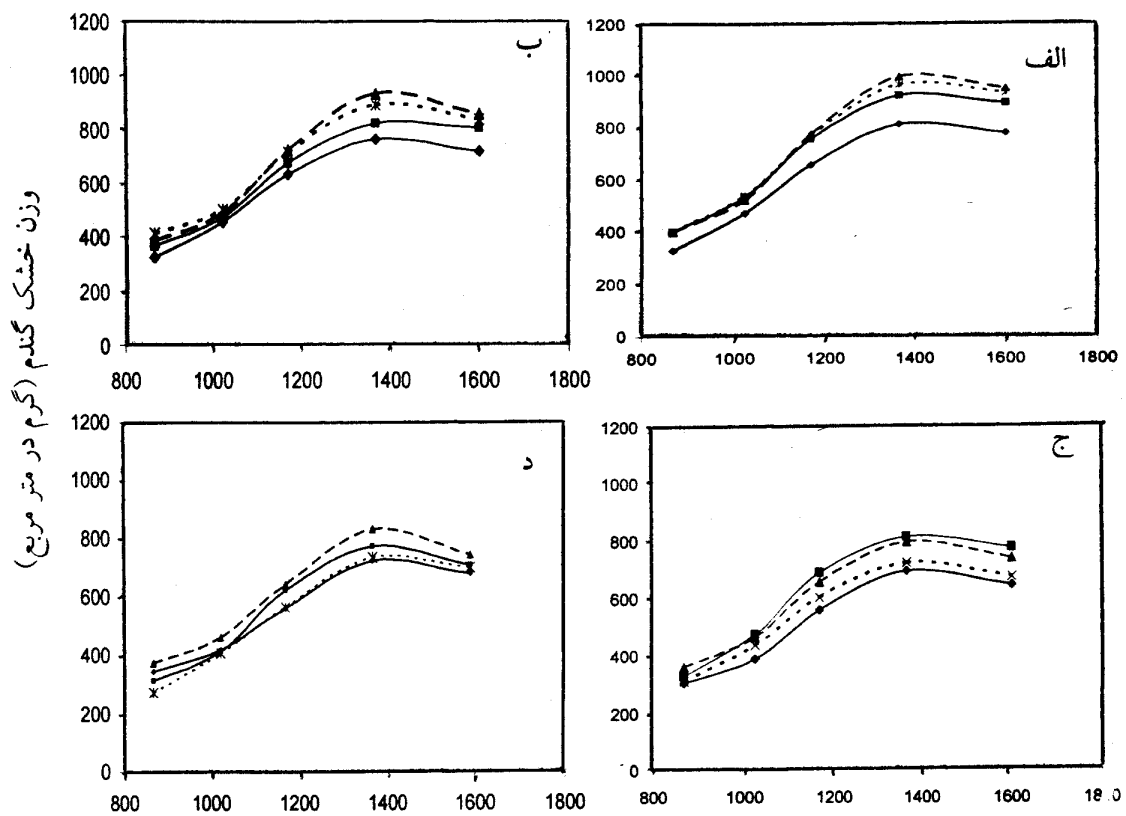
()



درجه روز رشد (GDD)

- مفر بوته چاودار
- ۱۰ بوته چاودار
- ▲— ۳۰ بوته چاودار
- ×— ۵۰ بوته چاودار
- ۷۰ بوته چاودار
- ۸۰ بوته چاودار

() () () ()



درجه روز رشد (GDD)

- گندم ۳۵۰ بوته
- گندم ۴۵۰ بوته
- ▲ گندم ۵۵۰ بوته
- × گندم ۶۵۰ بوته

() () () ()

()

(

)

... (*Secale cereale* L.) :

()

()

()

()

()

()

)

()

(

()

()

)

(

()

()

()

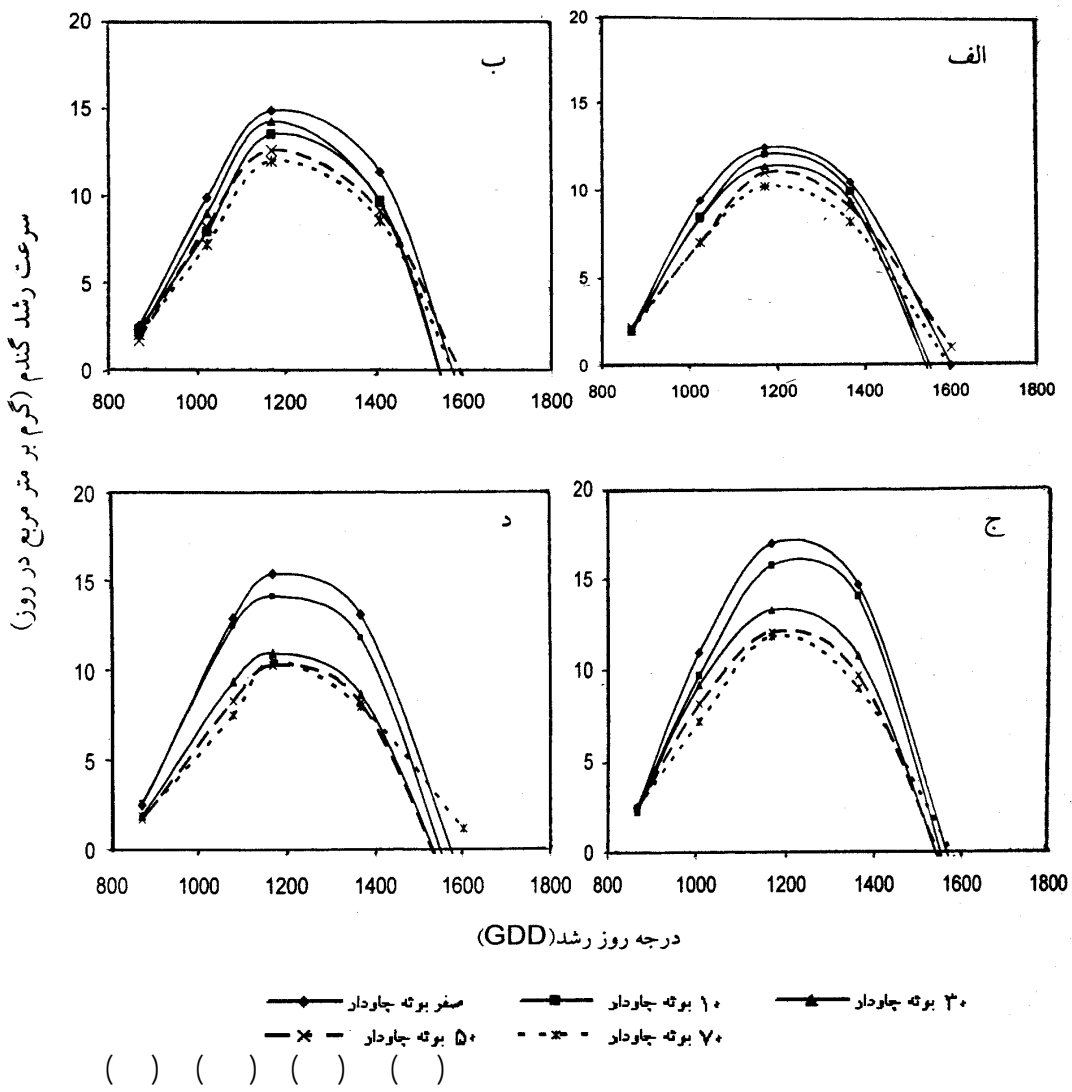
)

(

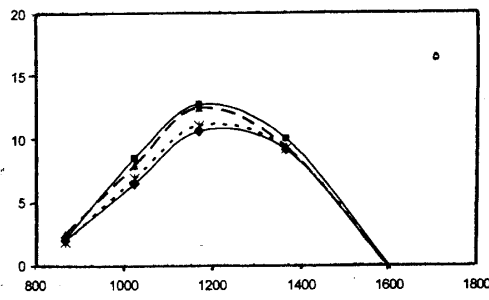
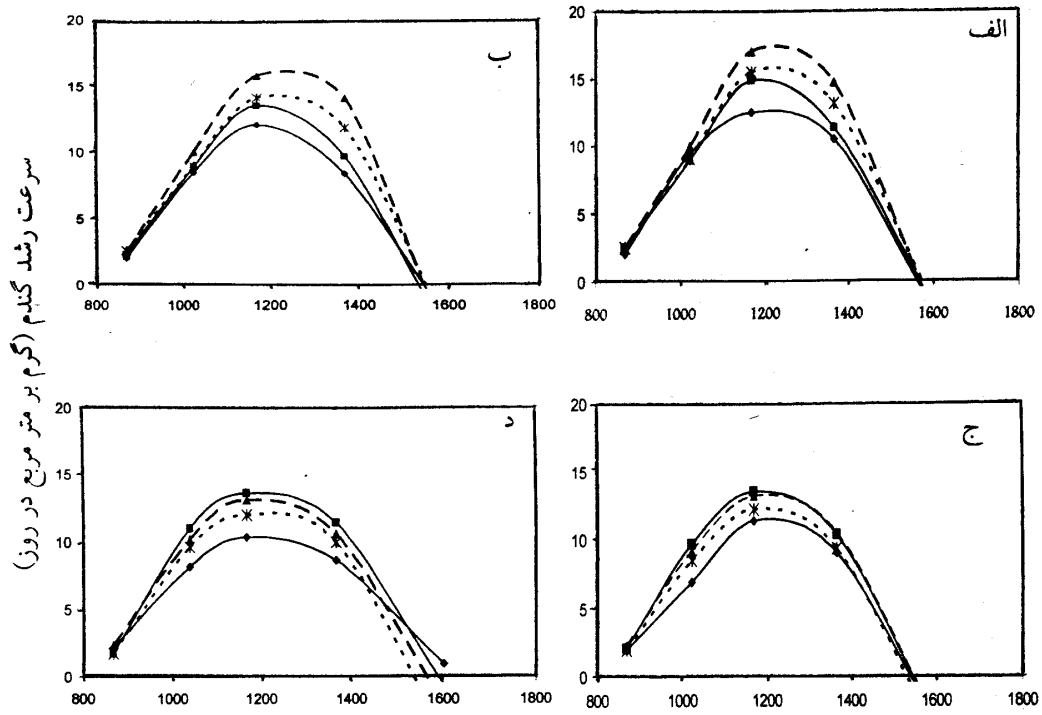
()

()

1 . Self thinning



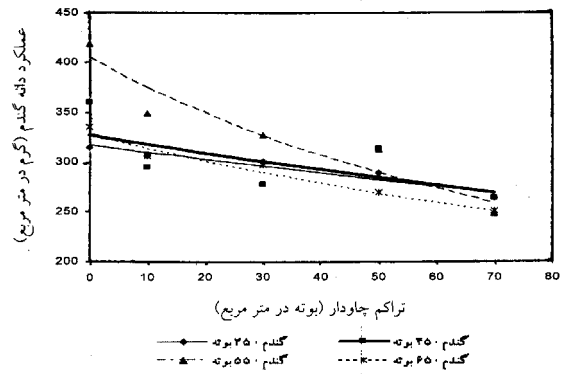
(*Secale cereale* L.)



گندم ۳۵۰ بونه (diamond) گندم ۴۵۰ بونه (square)
 گندم ۵۵۰ بونه (triangle) گندم ۶۵۰ بونه (asterisk)

() () () ()

()



(CGR))

(

()

)

(

(

REFERENCES

(*Secale cereale*)

5. Bullock, D. G., R. L. Nielson, & W. E. Nyquist. 1988. Growth analysis comparison of corn grown in conventional and equidistant plant spacing. *Crop Sci.* 28:254-258.
6. Callaway, M. B. 1990. A compendium of crop varietal tolerance to weeds. *Am. J. Alternat. Agric.* 7: 169-180.
7. Carson, K. H., Cralle, T. H., Chandler, J. M., ...*et. al.* 1999. *Triticum aestivum* and *Lolium multiflorum* interaction during drought. *Weed Sci.* 47: 440-445.
8. Cavero, J., C. Zaragoza, M. L. Suso, & A. Pardo. 1999. Competition between maize and *Datura stramonium* in an irrigated field under semi-arid conditions. *Weed Res.* 39: 85-91.
9. Chase, W. R., M. G. Nair, A. R. Putnam, & S. K. Mishra. 1991. 2, 2-oxo-1,1-azobenzene: microbial transformation of rye (*Secale cereale* L.) allelochemical in fields soils by *Acinetobacter calcoaceticus*. III. *J. Chem. Ecol.* 17:1575-1584.
10. Daugovish, O., D. J. Lyon, & D. D. Baltensperger. 1999. Cropping systems to control winter annual grasses in winter wheat (*Triticum aestivum*). *Weed Technol.* 13:120-126.
11. Doyle, C. J. 1991. Mathematical model in weed management. *Crop Protec.* 10: 432-444.
12. Dunan, M. C. & R. L. Zimdahl. 1991. Competitive ability of wild oats (*Avena fatua*) and barley (*Hordeum vulgare*) *Weed Sci.* 39: 558-563.
13. Forcella, F. 1987. Tolerance of weed competition associated with high leaf area expands on rate in tall fescue. *Crop Sci.* 27: 146-147.

14. Horak, J. M. & T. M. Loughin. 2000. Growth analysis of four *Amaranthus* species. *Weed Sci.* 48: 347-355.
15. Knezevic, S. Z., M. J. Horak, & R. L. Vanderlip. 1999. Estimates of physiological determinations for redroot pigweed. *Weed Sci.* 47: 291-295.
16. Kropff, M. J., C. J. T. Spitters, B. J. Schnieders, W. Joenje, & W. De Groot. 1992. An eco-physiological model for interspecific competition, applied to the influence of *Chenopodium album* L. on sugar beet. II. Model evaluation. *Weed Res.* 32: 451-463.
17. Lindquist, J. L. & D. A. Mortensen. 1999. Ecophysiological characteristics of four maize hybrids and *Abutilon theophrasti*: *Weed Res.* 39: 271-285.
18. Lindquist, J. L., & D. A. Mortensen. 1999. Ecophysiological characteristics of four maize hybrids and *Abutilon theophrasti*. *Weed Res.* 39: 271-285.
19. Lindquist, J. L., D. A. Mortensen, & B. E. Johnson. 1998. Mechanisms of corn tolerance and velvetleaf suppressive ability. *Agron. J.* 90: 787-792.
20. Mesbah, A. O. & S. D. Miller. 1999. Fertilizer placement affects jointed goatgrass (*Aegilops cylindrica*) competition in winter wheat (*Triticum aestivum*). *Weed Technol.* 13:374-377.
21. Ngouajio, M., McGiffen Jr, M. E. & K. J. Hembree. 2001. Tolerance of tomato cultivar to velvetleaf interference. *Weed Sci.* 49: 91-98.
22. Ni, H., Moody, K., Robles, R. P., Paller, Jr. C. E. & J. S. Lales. 2000. *Oryza sativa* plant traits conferring competitive ability against weeds. *Weed Sci.* 48: 200-204.
23. Norris, R. F., Elmore, C. L., Rejmank M., & W. C. Akey. 2001. Spatial arrangement, density, and competition between barnyardgrass and tomato: I. Crop growth and yield. *Weed Sci.* 49: 61-68.
24. Radosevich, S. R. & J. Holt. 1984. *Weed Ecology: Implication for Vegetation Management*. New York: J. Wiley, pp. 93-193.
25. Radosevich, S., J. S. Holt, & C. Ghersa. 1997. Pages 278-301 in *Weed Ecology: Implications for vegetation management*. New York: John Wiley and Sons.
26. Roush, M. L. & S. R. Radosevich. 1985. Relationship between growth and competitiveness of four annual weeds. *J. Appl. Biol.* 22:895-905.
27. Suenson, C. A., K. O. Rachie, & G. S. Khush. 1969. A dynamic population of weedy rye. *Crop Sci.* 9:121-124.
28. Tanji, A. & R. L. Zimdahl. 1997. The competitive ability of wheat (*Triticum aestivum*) compared to rigid rye grass (*Lolium rigidum*) and cowcockle (*Vaccaria hispanica*). *Weed Sci.* 45: 481-487.
29. Weaver, S. E., M. Kropff, & R. M. W. Groeneveld. 1992. Use of eco-physiological models for crop-weed interference: the critical period of weed interference. *Weed Sci.* 40: 302-307.