

()

*

(// : // :)

()

LEACHN DRAINMOD-N

Archive of SID

LEACHN

)

DRAINMOD-N

(

()

LEACHN

()

LEACHN

()

LEACHN

()

/

()

DRAINMOD

/

A

()

DRAINMOD

/

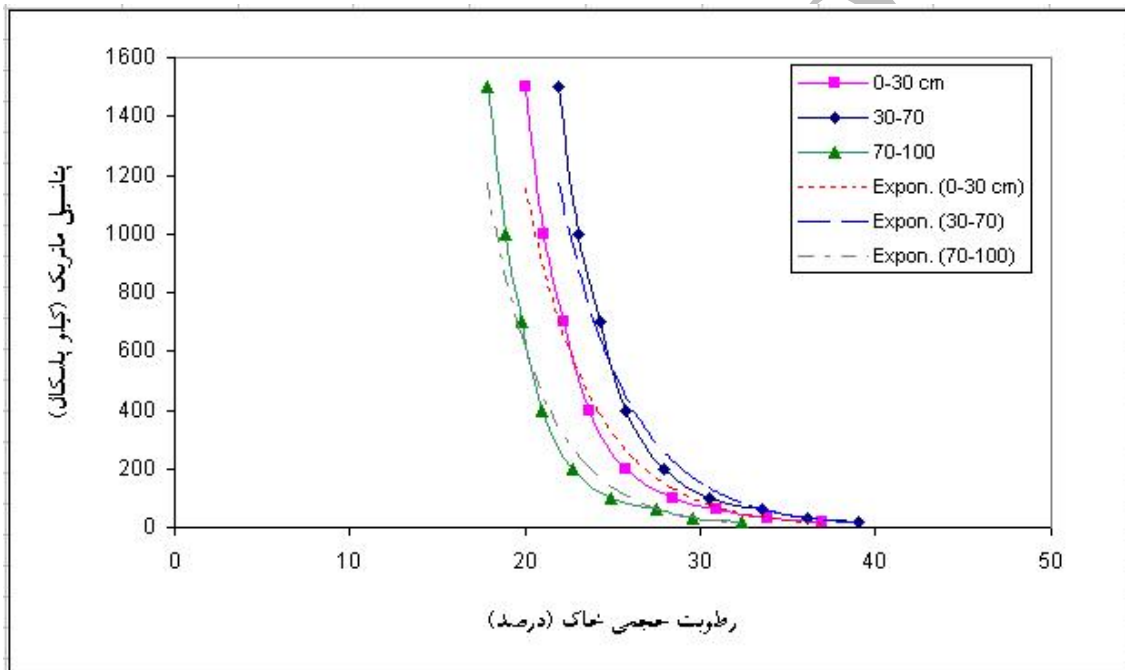
Archive of SID

TDR

DRAINMOD-N LEACHN

(%)	()	()
/		

(%)	ppm	ppm	%OM	PH	(s/m)
/					



Arch

LEACHN
LEACHN

LEACHN

Drainmod-N

)
(
()
()

() ()

() ()

() ()
()

(Volatilization)

DRAINMOD-N
DRAINMOD

(Antonopoulos, 2000)

Drainmod-N

$$MBE = \sum_{i=1}^n (P_i - O_i) / n \quad ($$

$$CV = 100 \cdot (\sum_{i=1}^n (P_i - O_i)^2 / n)^{0.5} / \bar{O} \quad ($$

$$EF = (\sum_{i=1}^n (O_i - \bar{O})^2 - \sum_{i=1}^n (P_i - O_i)^2) / \sum_{i=1}^n (O_i - \bar{O})^2 ($$

$$= O_i \quad = P_i$$

$$= n \quad = \bar{O}$$

$$= EF \quad = CV \quad = MBE$$

-
1. Mean bias error
 2. Coefficient of variation
 3. Modelling efficiency

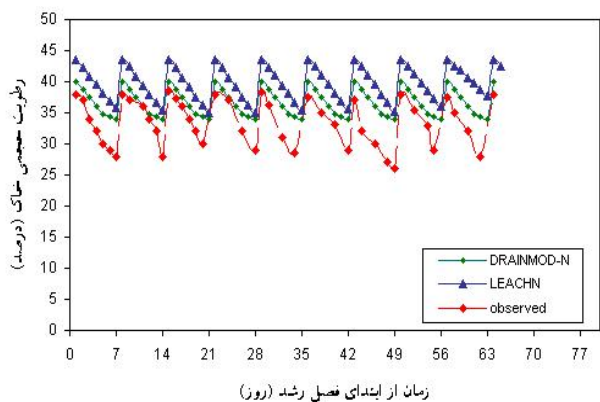
NO₃-N

DRAINMOD-N

Davidson et al.,(1987)	/	day ⁻¹	(k _{min})
Davidson et al.,(1987)	/	day ⁻¹	(k _{den})
Skaggs, R.W. (1980)	/	cm ² day ⁻¹	(Diffusion Coefficient)
Skaggs, R.W. (1980)		cm	(Dispersivity)
.	/	C°	
.	/	C°	
Skaggs, R.W. (1980)		cm	
Skaggs, R.W. (1980)		day	
Skaggs, R.W. (1980)		C°	
Skaggs, R.W. (1980)			Q ₁₀

LEACHN

Van Closter et al.(1995)		mm	(λ)
Lotse et al.(1992)		Lkg ⁻¹	(K _d)
Lotse et al.(1992)		Lkg ⁻¹	(K _d)
Lotse et al.(1992)		Lkg ⁻¹	(K _d)
Hutson and Wagnet.(1992)		mm ² day ⁻¹	(D _o)
Johnsson et al.(1987)	/		(f _e)
Ramos and Carbonell.(1991)			Q ₁₀
Van Closter et al.(1995)		day ⁻¹	
Tillotson and Wagnet.(1982)	/	day ⁻¹	
	/ a	kpa	(a)
	/ a		(b)
Acutis.(1997)	/	day ⁻¹	



of SID

LEACHN

LEACHN

DRAINMOD-N

LEACHN

DRAINMOD-N

LEACHN

DRAINMOD-N

LEACHN

DRAINMOD-N LEACHN

LEACHN

()
()

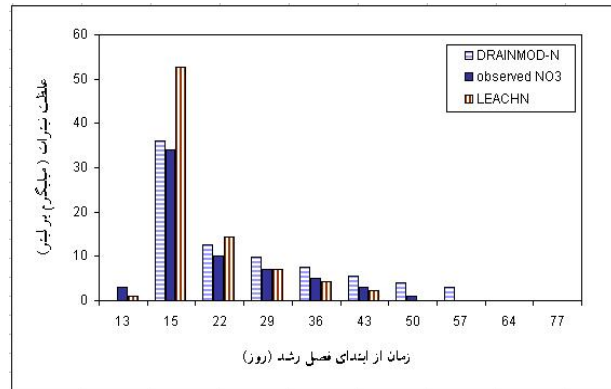
DRAINMOD-N

DRAINMOD-N

()

(LEACHN)

	()	()	
EF	C.V.	M.B.E.	
/	/	/	
/	/	/	



/

/ / /

/ /

/ / / / / /

()

DRAINMOD-N

/ / /

/ / /

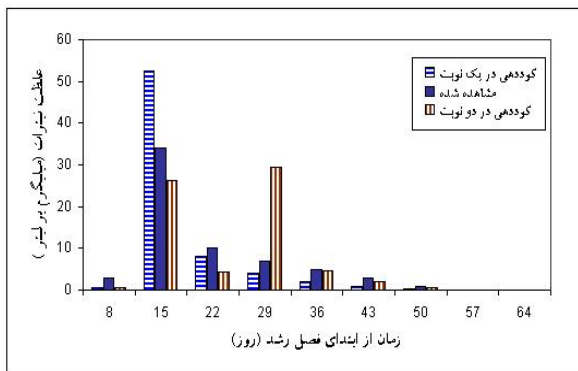
LEACHN

DRAINMOD-N

LEACHN

DRAINMOD-N

LEACHN

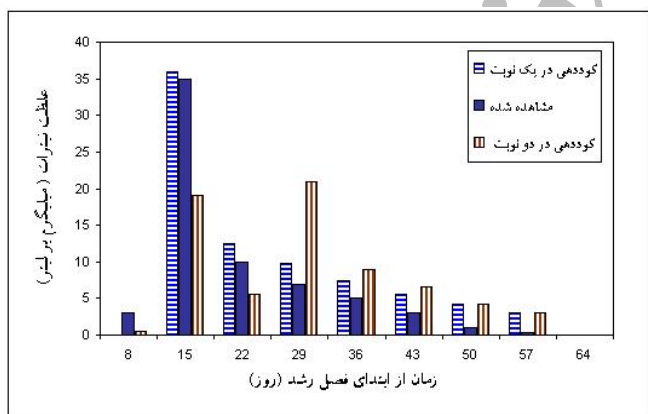


LEACHN

DRAINMOD-N

LEACHN

LEACHN



DRAINMOD-N

LEACHN

(DRAINMOD-N)

	()	()	
EF	C.V.	MBE	
/	/	/	
/	/	/	

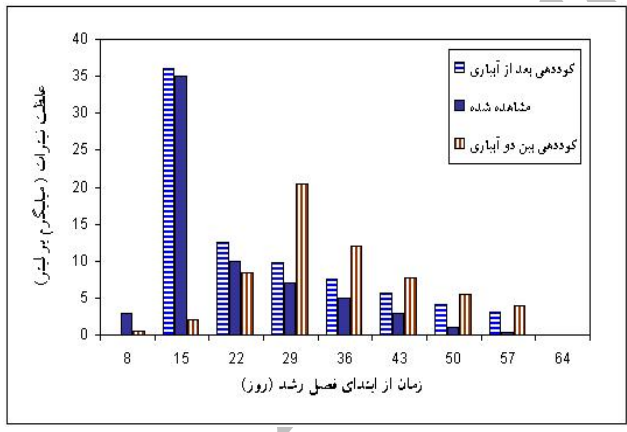
%)
()
)
(
DRAINMOD-N LEACHN

()

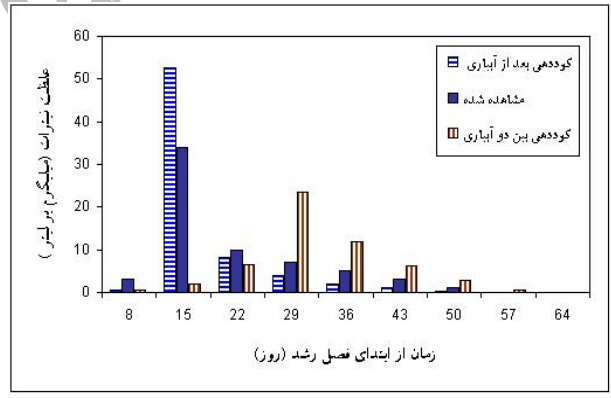
LEACHN

DRAINMOD-N

()



DRAINMOD-N



LEACHN

REFERENCES

(.)

5. Acutis, M. 1997. Modeling Leaching of Nitrate: calibration and validation of LEACHN model in different soils and forage crops. *Rivista-di-Agronomia*. (Italy). 31(1): 42-51
6. Acutis, M., G.Ducco., & C. Grignani. 2000. Stochastic use of the LEACHN model to forecast nitrate leaching in different maize cropping systems. *European Journal of Agronomy*. 13(2000): 191-206.
7. Campbell, G. 1974. A simple method for determining unsaturated conductivity from moisture retention data. *Soil. Sci.* 117: 311-314.
8. Haan, P.K. & R.W. Skaggs. 2003. Effect of Parameter Uncertainty on DRAINMOD Predictions: II. Nitrogen Loss. *ASAE*. 46(4): 1069-1075.
9. Hutson, J.L., & R.J. Wagenet. 1992. LEACHM. Leaching Estimation and Chemistry Model : A process based model of water and solute movement, transportation, plant uptake and chemical reactions in unsaturated zone. Version 3. Dept. of Agronomy, Cornell Univesity, Ithaca, NY.
10. Jabro, J.D., J.D. Toth, Z. Dou, R.H. Fox, & D.D. Fritton. 1995. Evaluation of nitrogen version of LEACHM for prediction nitrate leaching. *Soil Science*. 160(3): 209-217.
11. Jemison, J. M., J. D. Jabro, & R.H. Fox. 1994. Evaluation of LEACHM: II. Simulation of nitrate leaching from nitrogen-fertilized and manure corn. *Agron. J.* 86: 852-859.
12. Johnson, H., L. Bergstrom, P.E. Janssen, & K. Paustian. 1987. Simulated nitrogen dynamics and losses in a layered agricultural soil. *Agriculture Ecosystem and Environment*. 18: 333-356.
13. Lotse, E.G., J.D. Jabro, K.E. Simmons, & D.E. Baker. 1992. Simulation of nitrogen dynamics and leaching from arable soils. *J. Contam. Hydrol.* 10: 183-186.
14. Ramos, C. & E.A. Carbonell. 1991. Nitrate leaching and soil moisture prediction with the LEACHM model. *Fertilizer Research*. 27: 171-180.
15. Sadek, A. E., J. Feyen., & R. Ragab. 2002. Simulation of nitrogen balance of maize field under different drainage strategies using the DRAINMOD-N model *Irrigation and Drainage*. 51(1): 61-75.
16. Skaggs, R.W. 1978. A water management model for shallow water table soils. Univ. North Carolina Water Resour. Res. Inst. Tech. Rep. 134.
17. Skaggs, R.W. 1980b. DRAINMOD: Reference Report – Methods for Design and Evaluation of Drainage-Water Management Systems for Soils with High Water Tables. USDA-SCS. Fort Worth.TX.
18. Sobedji, J.M., H.M. van Es, & J.L. Huston. 2001. N fate and transport under variable cropping history and fertilizer rate on loamy sand and clay loam soils: I. Calibration of the LEACHMN model. *Plant and Soil*. 229: 57-70.
19. Sondhi, S.K. & Singh, K.G. 2002. Validation of a Fertilizer Nitrogen Model during crop production. *J. Agric. Engang Res.* 78(3): 317-324.
20. Tillotson, W.R. & R.J.,Wagenet. 1982. Simulation of fertilizer nitrogen under cropped situations. *Soil Science*. 133: 133-143.
21. Van Closter, M., P. Viaene, J., Diels, & J. Feyen. 1995. A deterministic evaluation analysis applied to an integrated soil-crop model. *Ecol. Modelling*. 81: 183-195.

Archive of SID