

()

Magnaporthe grisea (Hebert) Barr

*

(// : // :)

Magnaporthe grisea

°C

%

Mat1-1

(%)

Mat1-2

M. grisea

Magnaporthe grisea . :

()

Magnaporthe grisea

Pyricularia grisea :] (Hebert) Barr

[(Cooke) Sacc.

()

-
1. Parasexual cycle
 2. Sexual dimorphism
 3. Mating type

E-mail: jnikkhah@ut.ac.ir

: *

()

ī

Mat1-1

.()

1

.()

Mat1-2 Mat1-1

()

l)

% (

.()

.()

°C)

°C

()

Ceratosphaeria grisea

Magnaporthe grisea (Hebert) Barr

% -

.()

PDA

PDA

.()

/

.()

°C

()

.()

1. Idiomorph

...

TH16

Mat1-2 KA9

KA3 TH12 Mat1-1

Mat1-2 Mat1-1

1 KA3 KA9 (.)

TH16 TH12

TH16 TH12

KA9 KA3

(.)

TH16 KA9 °C

°C (.)

× (.) × (.)

KA9

TH16

(%)

(.) Mat1-1

KA9

TH16

(%)

1. fingermillet (*Eleusine coracana*)

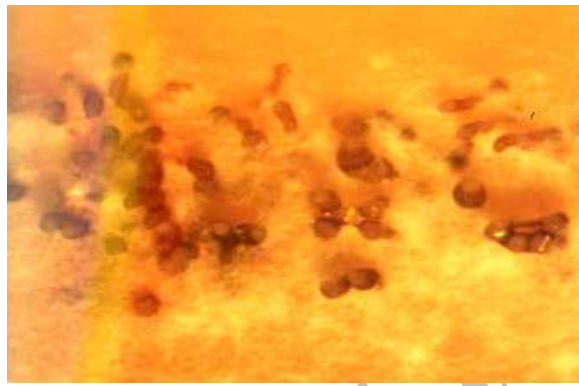
2. RFA (Rice Flour Agar)

% () %
 % ()
 ()

% % %

% % %
 ()

Magnaporthe grisea



Maz-17
Magnaporthe TH16
grisea
 (x) *Mat1-2*



Maz-39
Magnaporthe grisea KA9
 (x) *Mat1-2*

Magnaporthe

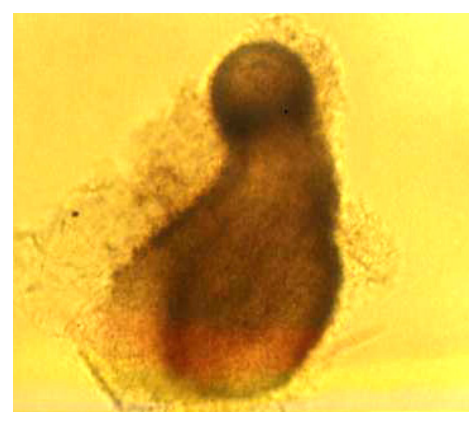
grisea

(% /) (% /)
 (% /) (% /)
 (% /) (% /)

... :

. ()

() ()
() ()



Maz-39
Magnaporthe TH16
(x) *Mat1-2* *grisea*

1
()
Mat1-1

M. grisea

Mat1-2

%

() *Mat1-1*

. ()

. ()

. ()

و

Mat1-1

. ()

. ()

1. Clonal lineage

Archive of SID

REFERENCES

Magnaporthe grisea (Herbert) Barr

Magnaporthe grisea (Herbert

Barr)

3. Blakeslee, A. F. 1904. Sexual reproduction in the Mucorinae. Proceeding of National Academy of Science, USA 40: 205-319.
4. Dayakar, B. V., N. N. Narayanan & S. S. Gnanamanickam. 2000. Cross-compatibility and distribution of mating type alleles of the rice blast fungus *Magnaporthe grisea* in India. Plant Disease 84: 700-704.
5. Glass, N. I. & G. A. Kuldau. 1992. Mating type and vegetative incompatibility in filamentous ascomycetes. Annual Review of Phytopathology 30:201-224.
6. Hebert, T. T. 1970. The perfect stage of *pyricularia grisea*. Phytopathology 61: 83-87.
7. Lesli, J. F. & K. K. Klein. 1996. Female fertility and mating type effects on effective population size and evolution in filamentous fungi. Genetics 144: 557- 267.
8. Leung, H. & P. H. Williams. 1985. Genetic analyses of electrophoretic enzyme variant, mating type, and hermaphroditism in *Pyricularia oryzae* Cavara. Canadian Journal of Genetic and Cytology 27: 697- 704.
9. Mekawatnakarn, P., W. Kositratana., T. Phromrakasa & R. S. Zeigler. 1999. Sexually fertile *Magnaporthe grisea* rice pathogens in Thailand. Plant Disease 83: 939-943.
10. Nottoghem, J. L. & D. Silue. 1992. Distribution of mating type alleles in *Magnaporthe grisea* populations pathogenic on rice. Phytopathology 82: 421-424.
11. Tanaka, Y., N. Murtata & H. Kato. 1979. Behavior of nuclei and chromosomes during ascus development on the mating between either rice-strain of *Pyricularia*. Annales Phytopathological Society of Japan 45: 181-192.
12. Valent, B., M. S. Crawford., C. G. Weaver & F.G. Chumley. 1986. Genetic studies of fertility and pathogenicity in *Magnaporthe grisea*. Iowa state Journal of Research 60: 565-594.
13. Vigi, G. & S. S. Gnanamanickman. 1998. Mating type distribution and fertility status of *Magnaporthe grisea* populations from various hosts in India . Plant Disease 82: 36-40.
14. Vigi, G. & W. Uddin. 2002. Distribution of mating type alleles and fertility status of *Magnaporthe grisea* causing gray leaf spot of perennial ryegrass and augustinegrass turf. Plant Disease 84: 827-832
15. Urashima, A. S., S. Igarashi. & H. Kato. 1993. Host range. Mating type, fertility of *Pyricularia grisea* from wheat in Brazil. Plant Disease 77: 1211-1216.

- ...
- :
16. Yaegashi, H. & N. Nishihara. 1976. Production of the perfect stage in *Pyricularia* from cereals and grasses. *Annals Phytopathological Society of Japan* 42: 511-515.
 17. Yaegashi, H. & M. Yamada. 1986. Pathogenic races and mating types of *Pyricularia oryzae* from soviet Union, China, Nepal, Thailand, Indonesia and Colombia. *Annales Phytopathological Society of Japan* 52: 225-234.
 18. Zeigler, R. S. 1998. Recombination in *Magnaporthe grisea*. *Annual Review of Phytopathology*, 36: 249-275.

Archive of SID

Archive of SID