

()

(mating types)

Gibberella fujikuroi

*

(// : // :)

Gibberella fujikuroi

SNA

MATA-2 MATA-1

D C A

% % %

MATD-2 MATD-1 MATC-2 MATC-1

D C A

D

D

A

(*Fusarium fujikuroi*) C

(*Fusarium verticillioides*)

(*Fusarium proliferatum*) D

Gibberella fujikuroi species complex :

.()

.()

.()

C A .() I A
D

C () .()
D A

.() .()

Fusarium

G. fujikuroi

.()

.()

(

() .()

F. moniliforme ()

F. fujikuroi ()

(/)
PDA

MAT-2 MAT-1

MAT-2 MAT-1 MAT

((Idiomorph)

SNA ()

°C

G. fujikuroi

-
1. Section Liseola
 2. Dimictic
 3. *Gibberella fujikuroi* species complex

... (mating types)

:

(

Carrot Agar

D C A

MATC- MATC-1 MATA-2 MATA-1

MATD-2 MATD-1 2

()

()

D

° C

° C

)

A

MATA-1

(

(A)

C
MATC-1

MATC-2

MATD-1

D

MATD-2

()

D

C

(B)

(false-heads)

D

)

C A

(

% A

%

D

%

C

()

D



Gibberella (/ ml)

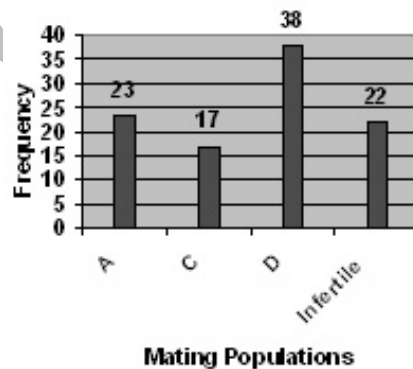
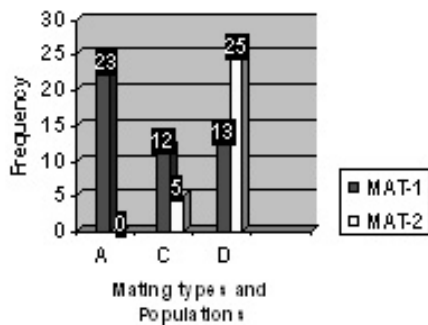
fujikuroi

جدول ۱ - وضعیت سازگاری جنسی در تعدادی جدایه *Gibberella fujikuroi* بدست آمده از بوته های آلوده برنج در مناطق

مختلف استان گیلان در آزمایشگاه

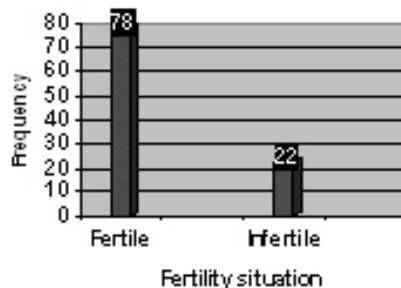
Gf-272	Gf-266	Gf-256	Gf-254	Gf-252	Gf-167	Gf-165	Gf-159	
-	+	-	-	-	-	-	-	Gf-159
-	-	-	+	-	-	-	-	Gf-165
+	-	-	-	-	-	-	-	Gf-167
-	-	+	-	-	-	-	-	Gf-252
-	-	-	-	-	-	+	-	Gf-254
-	-	-	-	+	-	-	-	Gf-256
-	-	-	-	-	-	-	+	Gf-266
-	-	-	-	-	+	-	-	Gf-272

+



شکل ۳- فراوانی الیهای *MAT-1* و *MAT-2* در جمعیت های آمیزشی *Gibberella fujikuroi* در A, C و D در جدایه های

شکل ۲- فراوانی جمعیت های آمیزشی A, C و D در جدایه های *Gibberella fujikuroi*



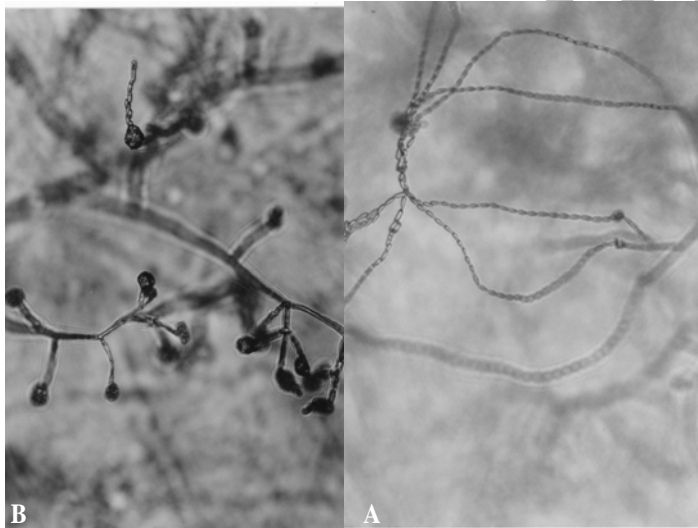
شکل ۴- مقایسه فراوانی جدایه های بارور (fertile) و نابارور (infertile) در جمعیت *Gibberella fujikuroi*

... (mating types)

:

Gibberella fujikuroi

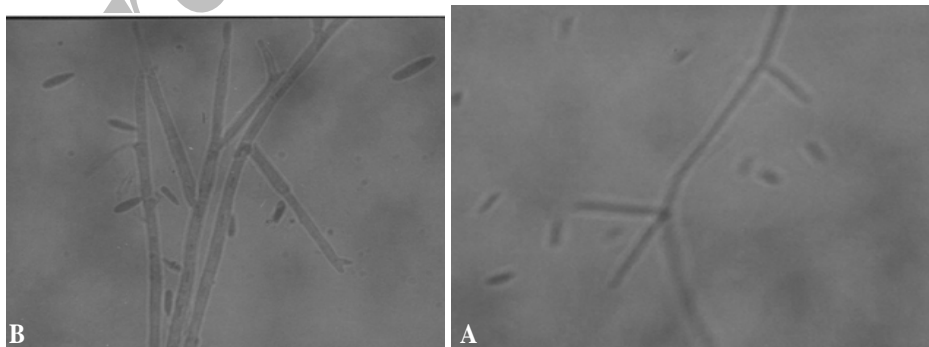
D		C		A		
MAT ⁻²	MAT ⁻¹	MAT ⁻²	MAT ⁻¹	MAT ⁻²	MAT ⁻¹	
	+					Gf-159
+						Gf-165
+						Gf-167
	+					Gf-252
	+					Gf-254
+						Gf-256
+						Gf-266
	+					Gf-272



(false-heads)

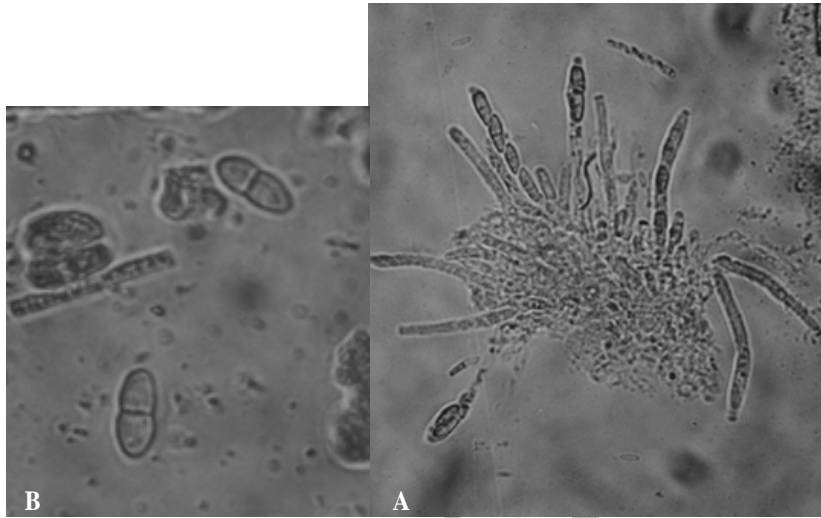
(B)

(A)



(B)

(A. *Gibberella fujikuroi*)



(A)

Gibberella fujikuroi

(B)

G. fujikuroi

G. fujikuroi

G. fujikuroi

F. verticillioides

MATA-1

MATA-2

F. fujikuroi

MATC-2 MATC-1

... (mating types) :

D

C A

F. fujikuroi MATA-2 MATA-1

F. MATD-2 MATD-1 MATC-2 MATC-1

F. proliferatum verticillioides %

(.)

F. ()

fujikuroi ° C

(C) *F. fujikuroi* (.)

(A) *F. verticillioides*

(D) *F. proliferatum*

REFERENCES

4. Anonym. 1979. Bakanae disease infection and yield loss. IRRI annual report for 1979: 173.
5. Booth, C. 1981. Perfect status (teleomorphs) of *Fusarium* species, Pp. 446 – 452. in: *Fusarium* disease, biology and taxonomy. University Park. Pennsylvania state univ. Press. 457pp
6. Desjardins, A. E. 2003. *Gibberella* from A (venaceae) to Z (eae). Annu. Rev. Phytopathology, Vol. 41: 177 – 198
7. Desjardins, A. E. , H. K. Manandhar, R. D. Plattner, G. G. Manandhar, S. M. Poling & C. M. Maragos, 2000. *Fusarium* species from Neplase rice production of mycotoxins and gibberellic acid by selected species. Applied and Environmental Microbiology, Vol. 66(3): 1020 – 1025
8. Leslie, J. F. & B. A. Summerell, 2006. Fertility concepts. Pp. 45 – 55. in: *Fusarium* laboratory manual. W. F. O. Marasas, Medical Research Council, South Africa.
9. Nelson, P. E., T. A. Toussoun & W. F. O. Marasas, 1983. *Fusarium* species. in: An Illustrated manual for identification. The Pennsylvania State University Press. Pp.128 – 141

10. Nirenberg, H. I. & W. Gerlach, 1982. Liseola section. in: The genus *Fusarium* Pp.301 – 340
11. Nirenberg, H. I. & K. O'Donnell, 1998. New *Fusarium* species and combination within the *Gibberella fujikuroi* species complex. *Mycologia*, Vol. 90(3): 434 – 458
12. Ogawa, K. 1988. Damage by bakanae disease and its chemical control. *Japan pesticide information* 52 : 13 – 17
13. Summerell, B. A., B. Salleh & J. F. Leslie, 2003. A utilitarian approach to *Fusarium* identification. *Plant. Disease*, Vol. 87(2): 117 – 128
14. Yabuta, T. & T. Hayashi, 1939. Biochemical studies on the bakanae fungus of rice. II. Isolation of gibberellin, the active principle which makes the rice seedlings grow slenderly (in Japanese). *J. Agric. Chem. soc. Japan*15 : 57–266

Archive of SID