

(-)

)

()
()

+ (-)

	1	2	3	4	5	6	7	8
1	-4	-4	-4	-4	-4	-4	-4	-4
2	-8	-8	+10	-8	+14	-8	-8	-8
3	-12	-12	+11	-12	+19	+21	-12	-12

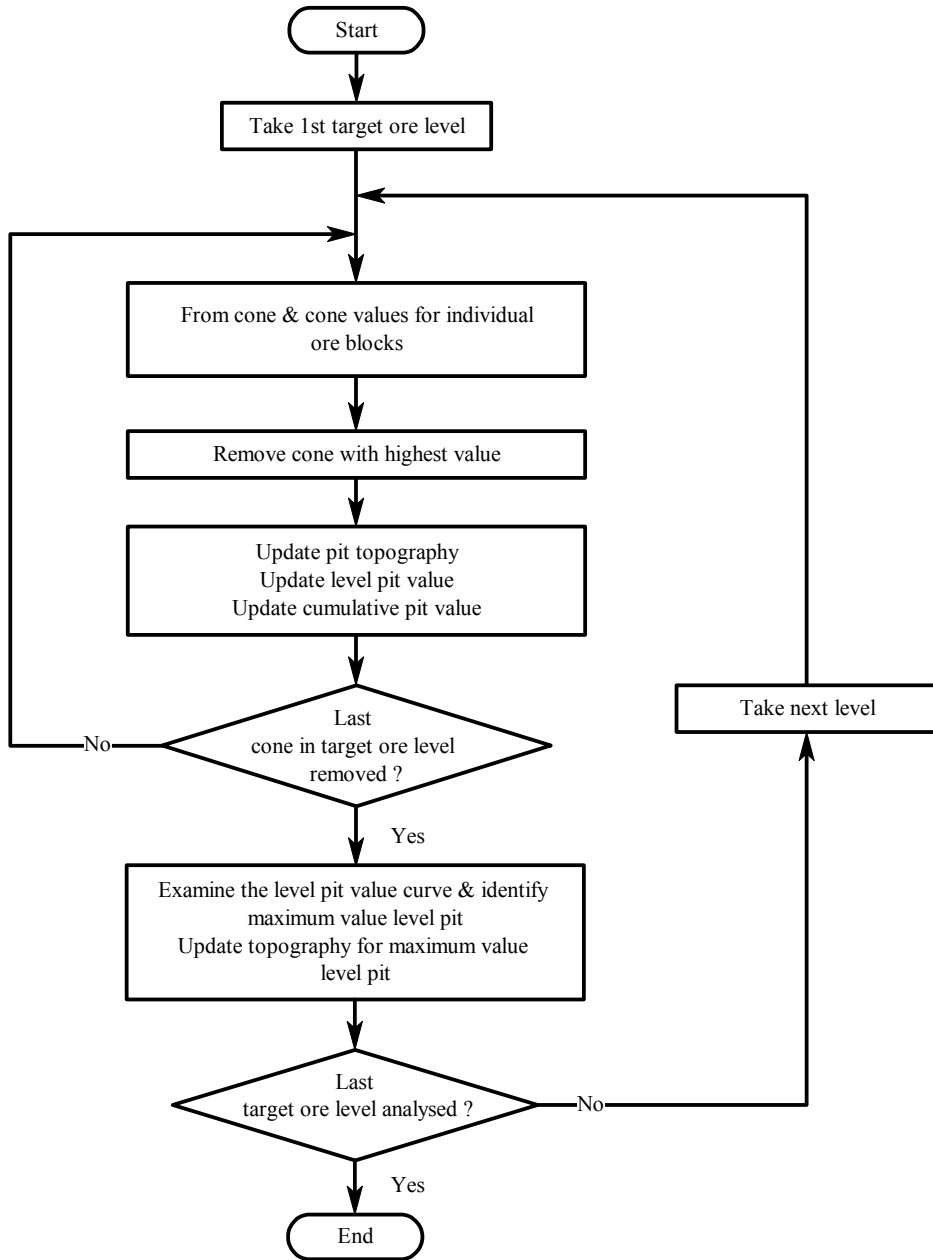
	1	2	3	4	5	6	7	8
1	-4	-4	-4	-4	-4	-4	-4	-4
2	-8	-8	+10	-8	+14	-8	-8	-8
3	-12	-12	+11	-12	+19	+21	-12	-12

[] :
[] [] [] []
[] []
[] []

[]

[]

[]
()



· []

:

()

-

:

-

()

-

()

	1	2	3	4	5	6	7	8
1	-4	-4	-4	-4	-4	-4	-4	-4
2	-8	-8	+10	-8	+14	-8	-8	-8
3	-12	-12	+11	-12	+19	+21	-12	-12
	()				-			

	1	2	3	4	5	6	7	8
1	-4	-4	-4	-4	-4	-4	-4	-4
2	-8	-8	+10	-8	+14	-8	-8	-8
3	-12	-12	+11	-12	+19	+21	-12	-12
	()				-			

	1	2	3	4	5	6	7	8
1	-4						-4	-4
2	-8	-8		-8		-8	-8	-8
3	-12	-12	+11	-12	+19	+21	-12	-12
								-

	1	2	3	4	5	6	7	8
1	-4	-4	-4	-4	-4	-4	-4	-4
2	-8	-8	+10	-8	+14	-8	-8	-8
3	-12	-12	+11	-12	+19	+21	-12	-12
								-

	1	2	3	4	5	6	7	8
1	-4					-4	-4	
2	-8	-8		-8		-8	-8	-8
3	-12	-12	+11	-12	+19	+21	-12	-12
	()					-		

	1	2	3	4	5	6	7	8
1	-4					-4	-4	
2	-8	-8		-8		-8	-8	-8
3	-12	-12	+11	-12	+19	+21	-12	-12
	()							-

	1	2	3	4	5	6	7	8
1	-4	-4	-4	-4	-4	-4	-4	-4
2	-8	-8	+10	-8	+14	-8	-8	-8
3	-12	-12	+11	-12	+19	+21	-12	-12
								-

	1	2	3	4	5	6	7	8
1	-4					-4	-4	
2	-8	-8		-8		-8	-8	-8
3	-12	-12	+11	-12	+19	+21	-12	-12
	()							-

. -

:

. -

:

+	+	+	()		
+	+	+	()		
-	-	+	()		
+	+	+	()		
+	-	+	()		

:

- - - + =- ()
 - - - + =- ()
 - - - - + =- ()

: (-)

()
 (-)
 ()

:

- - + =- ()
 - - + =+ ()

()

:

() ()

()
 (-)

+ -

-) ()

- - + =- ()

(
 ()

()

()

- - + =+

(-)

() ()

()

() ()

) ()

(

(-) +

(-)

(-)

)

+

+

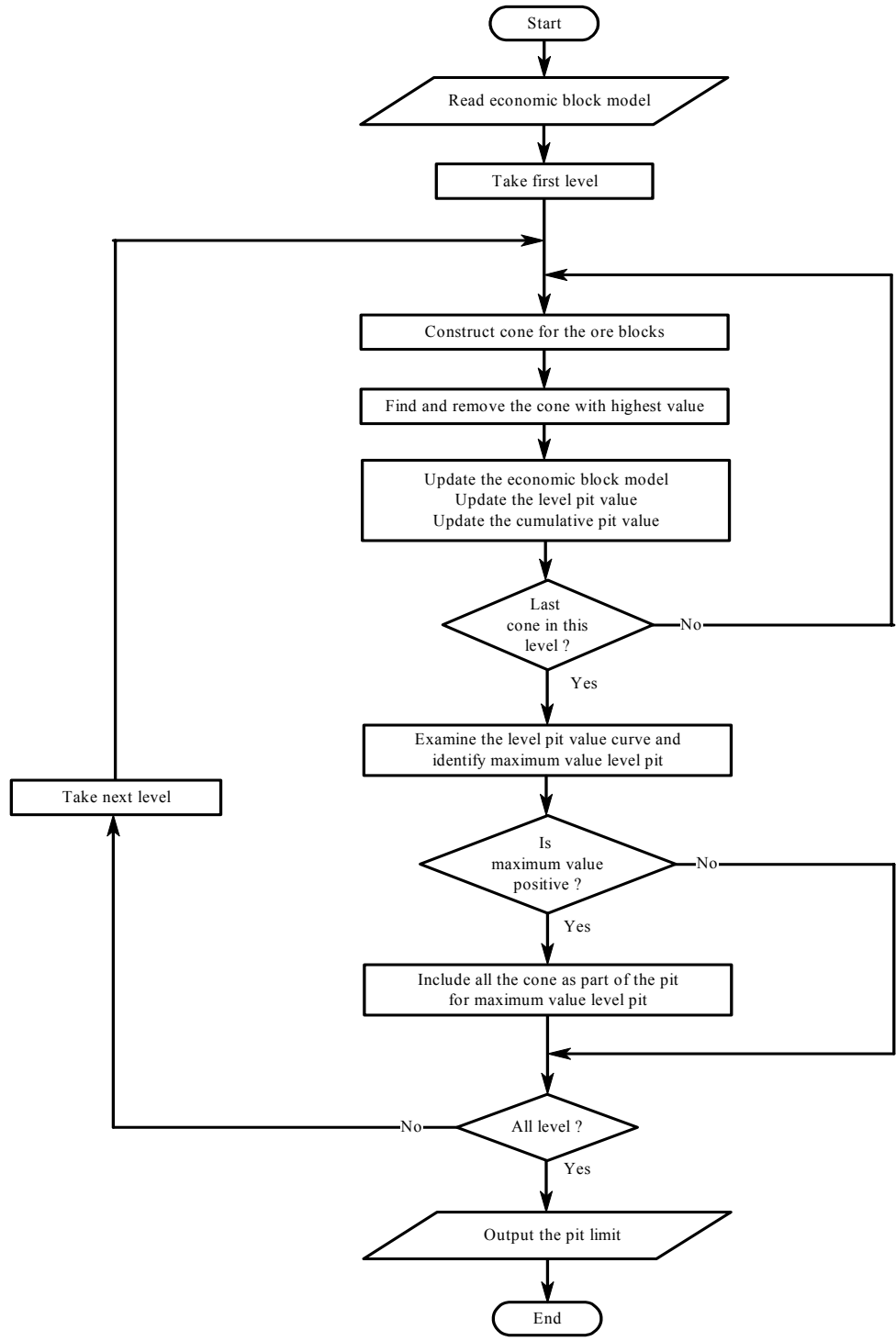
(-

(-)

()

()

+ (-)



:

-

-	-	+	()		
-	-	+	()		
-	-	+	()		
+	+	+	()		

-

-	-	+	()		
-	-	+	()		
-	-	+	()		
+	+	+	()		

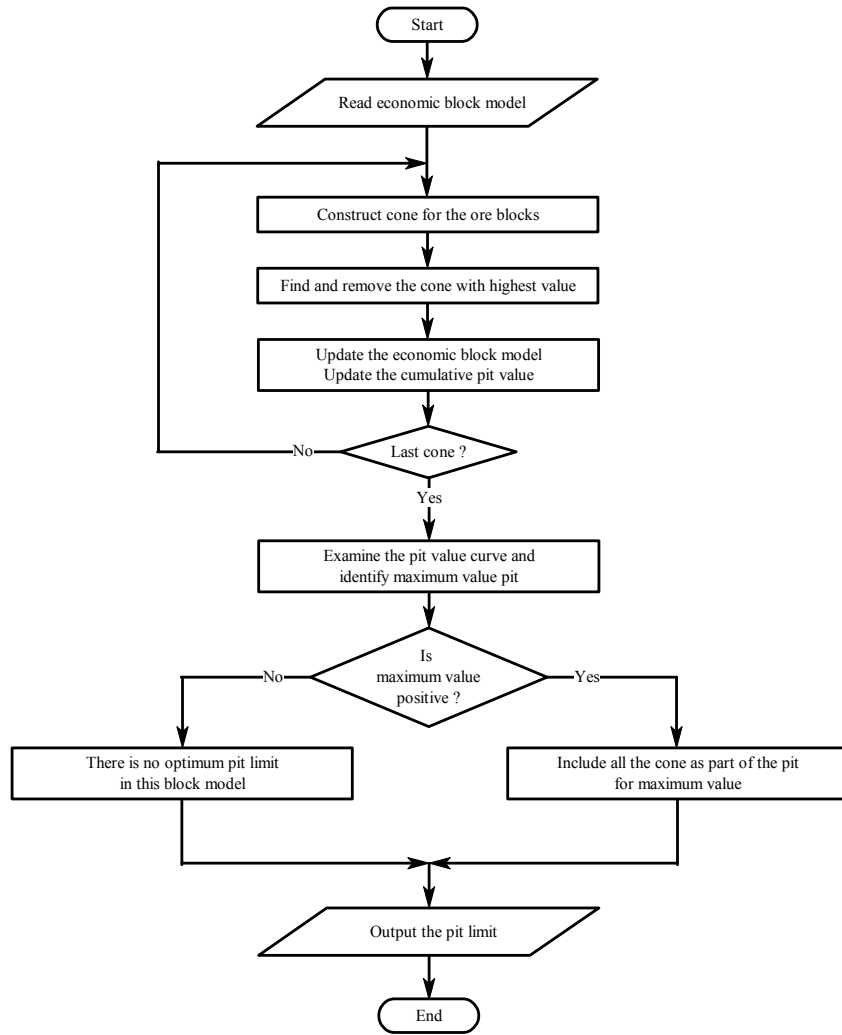
	1	2	3	4	5	6	7	8
1	-5	-5	-5	-5	-5	-5	-5	-5
2	-10	+8	-10	-10	-10	-10	+9	-10
3	-15	-15	-15	+54	-15	-15	-15	-15

	1	2	3	4	5	6	7	8
1	-5	-5	-5	-5	-5	-5	-5	-5
2	-10	+8	-10	-10	-10	-10	+9	-10
3	-15	-15	-15	+54	-15	-15	-15	-15

C++

[]

()



-	-	+	()	
+	+	+	()	
-	-	+	()	

(SEK) ×		()					
- /	/	/					
- /	/	/	/				
- /	/	/	/				-
- /	/		/				-
- /	/	/	/				

(SEK) ×) (()	
/	/	/ :		
/	/	/ :		
/	/	/ :		-
/	/	/ :		-
/	/	/ :		

()

() ()

Pentium

512MB RAM 2.8 GHz

-

-

[]

-

-

-

:

-

-

- 1 - Carlson, T. R., Erickson, J. D., O'Brain D. T. and Pana, M. T. (1966). "Computer techniques in mine planning." *Mining Engineering*, Vol. 18, No. 5, PP. 53-56.
- 2 - Wright, E. A. (1999). "MOVING CONE II - A simple algorithm for optimum pit limits design." *Proceedings of the 28th Symposium on the application of computers and operations research in the mineral industries (APCOM)*, (Colorado USA), pp. 367-374.
- 3 - Lerchs, H. and Grossmann, I. F. (1965). "Optimum design of open pit mines." *CIM Bulletin*, No. 58, PP. 47-54.
- 4 - Koenigsberg, E. (1982). "The optimum contours of an open pit mine: an application of dynamic programming." *Proceedings of the 17th Symposium on the application of computers and operations research in the mineral industries (APCOM)*, (New York: AIME), PP. 247-287.
- 5 - Wilke, F. L. and Wright, E. A. (1984). "Determining the optimal ultimate pit design for hard rock open pit mines using dynamic programming." *Erzmetall*, No. 37, PP. 139-144.
- 6 - Zhao, Y. and Kim, Y. C. (1992). "A new optimum pit limit design algorithm." *Proceedings of the 23rd Symposium on the application of computers and operations research in the mineral industries (APCOM)* (Littleton, Colorado: AIME), PP. 423-434.
- 7 - David, M., Dowd, P. A. and Korobov, S. (1974). "Forecasting departure from planning in open pit design and grade control." *Proceedings of the 12th Symposium on the application of computers and operations research in the mineral industries (APCOM)*, (Golden, Colorado School of Mines), Vol. 2, PP. F131-F142.
- 8 - Dowd, P. A. and Onur, A. H. (1993). "Open pit optimization - part 1: optimal open pit design." *Transaction Institution Mining and Metallurgy*, Section A: Mining Industry, No. 102, PP. A95-A104.
- 9 - Khalokakaie, R., Dowd, P. A. and Fowell, R. J. (2000). "Lerchs-Grossmann algorithm with variable slope angles." *Transaction Institution Mining and Metallurgy*, Section A: Mining Industry, No. 109, PP. A77-A85.
- 10 - Dowd, P. A. (1995). "Bjrkadal gold-mining project, northern Sweden." *Transaction Institution Mining and Metallurgy*, Section A: Mining Industry, No. 104, PP. A149-A163.
- 11 - Khalokakaie, R., Dowd, P. A. and Fowell, R. J. (2000). "A windows program for optimal open pit design with variable slope angles." *International Journal of Surface Mining, Reclamation and Environment*, No. 14, PP. 261-275.

1 - Floating cone method
3 - Dynamic programming
5 - Corrected from of Korobov algorithm

2 - Floating cone method II
4 - Graph theory