

Arthroscopic Mumford

*

conservative

Arthroscopic mumford

paired-t test

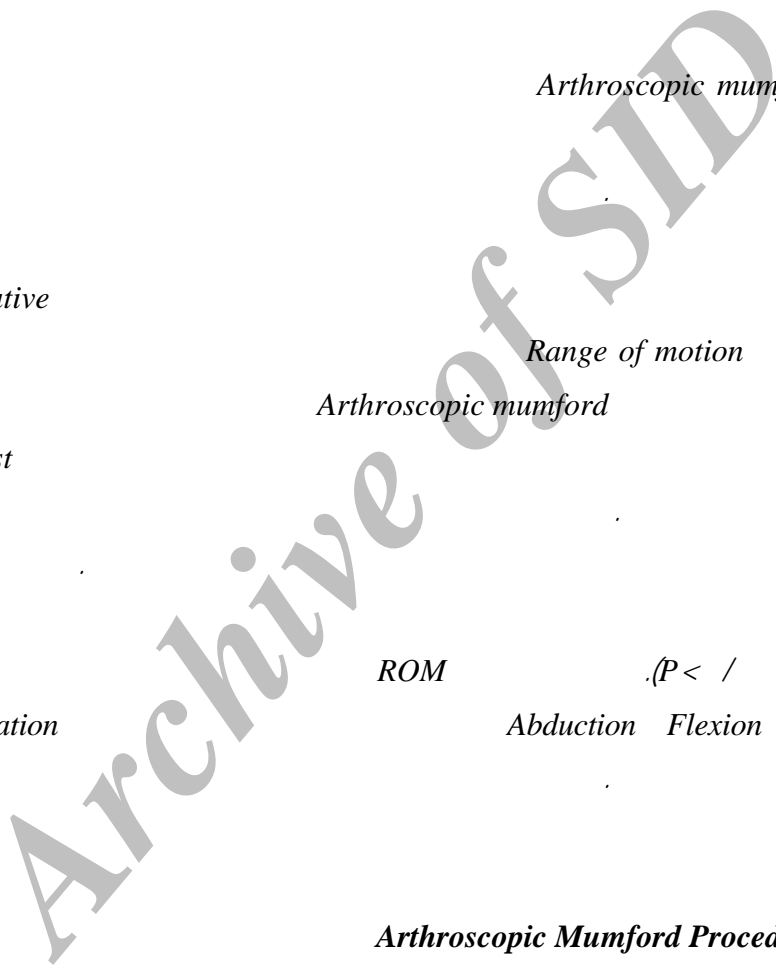
ROM

Internal rotation

Abduction Flexion

External rotation

Arthroscopic Mumford Procedure :



(Acromio clavicular) AC
diarthrodial
()

() .()

() Impingement AC

Flatow AC ()

()

NSAID

(labrum) ()

AC MRI

() AC

() Flexion Range of motion

burr Abduction

Internal rotation

Snyder External rotation

mumford

() ()

() % %

Snyder mumford

AC

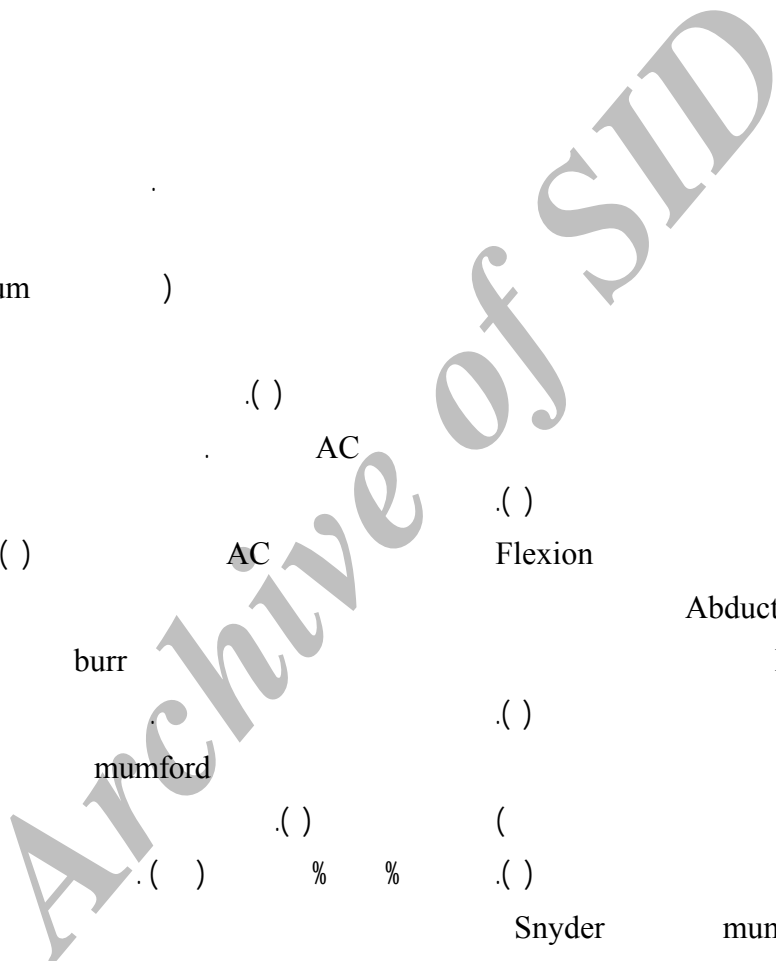
() Snyder ()

(%)

AC

()

AC open



AP)

(Tangential view

AC

()

()

DJD

beach chair

(MRI)

$\frac{1}{1000}$

()

Flexion

(ROM)

External rotation Internal rotation Abduction

()

resect

Internal rotation Abduction Flexion

External rotation

AC

()

()

(G A)

ROM

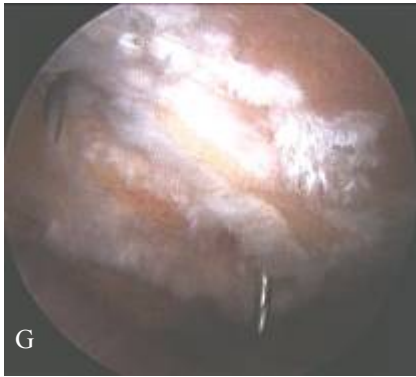
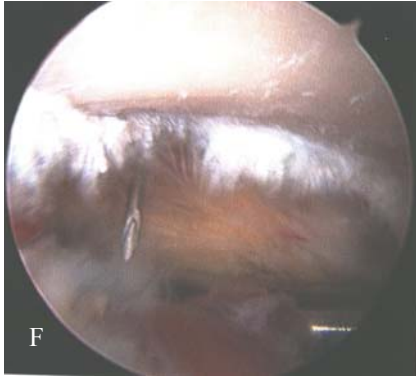


DJD AC

AC

Impingement

positive abduction sign



(E A)

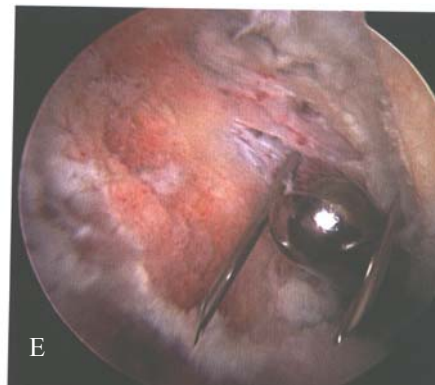
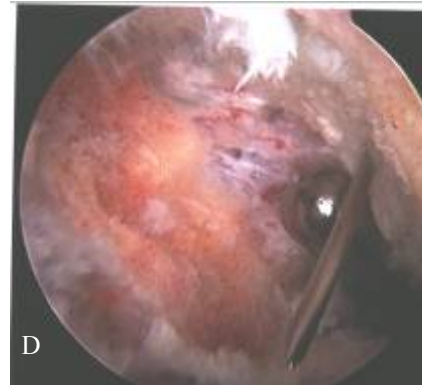
(G F) AC

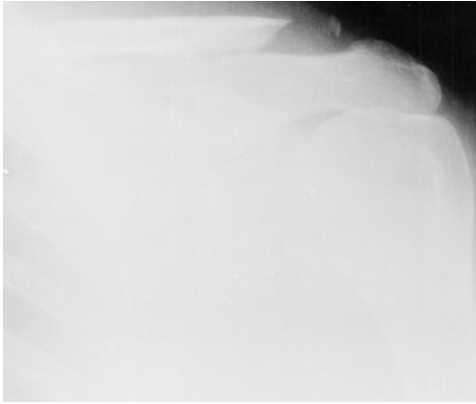
AC

expose

AC

/





(Type Ia)



(Type Ib)

Forward elevation Adduction

AC

ROM

sling

Pendulum

pulling overhead lifting

Abduction pillow

Rom

(strength)

ROM

paired-t test

McNemar



spike

lateral spike

(type II)

(/)

(/)

/ cm

AC

Flexion

Internal rotation

Abduction

External rotation

/

(/)

/

External rotation

/

(/)

paired-t test

Type Ia

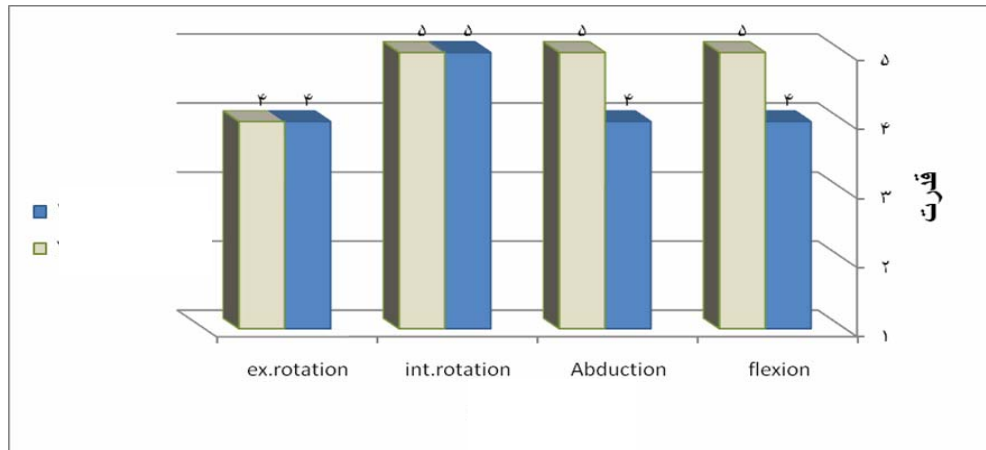
(P < /)

Type Ib

(/)

ROM

	degree	degree	
+	(- °)	(- °)	Flexion
+	(- °)	(- °)	Abduction
/ +	(- °)	(- °)	Internal rotation
/ +	(- °)	(- °)	External rotation

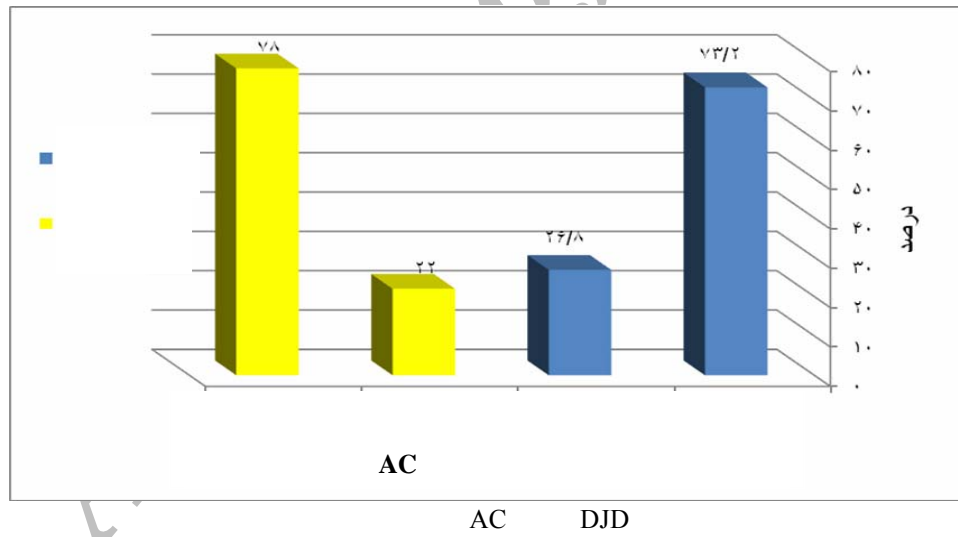


McNemar

($P < /$).

AC

(%)	(%)	(%)
()	()	()
()	()	()
()	()	()



AC

()

AC

()

AC

()

MRI

ROM

()

() ()

() motion

ROM

(mumford)

ROM

ROM

ROM

REFERENCES

1. Bucholz RW, Heckman JD. Rockwood and Green's fracture in adult. Vol 2. 2006; P: 1346.
2. Lesko PD. Variation of the arthroscopic mumford procedure. J South Orthop Assoc 2001; 10: 164-200.

3. Bigliani LU, Nicholas GP, Flatow EL. Arthroscopic resection of distal clavicle. *Orthop Clin North Am* 1993; 24: 133- 41.
4. Canale ST, Daugherty K, Janes L, Campbells operative orthopedic, Vol 3. 2003; P: 3197.
5. Walton J, Mahajan S, Marshal J. Diagnostic values of test for AC joint pain. *JBJS* 2004; 86: 807.
6. Magee DJ. *Orthopedic physical Assessment*. 4th ed. 2006; P:233.
7. Snyder SJ, Banas MP, Karzel RP. The arthroscopic mumford procedure: an analysis of results. *J Arthrosc Rel Surg* 1995; 11: 157-64.
8. Daluga DJ, Dobozi W. The influence of distal clavicle resection and rotator cuff repair on the effectiveness of anterior acromioplasty. *Clin Orthop* 1989; 247: 117-23.
9. Flatow EL, Duralde XA, Nicholson GP. Arthroscopic resection of the distal clavicle with a superior approach. *J Shoulder Elbow Surg* 1995; 4: 41-50.
10. Novak PJ, Bach BR Jr, Romeo AA. Surgical resection of the distal clavicle. *J Shoulder Elbow Surg* 1995; 4: 35-40.
11. Petchell JF, Sonnabend DH, Hughes JS. Distal clavicular excision: a detailed functional assessment. *Aust N Z J Surg* 1995; 65:262-6.
12. Cook FF, Tibone JE. The Mumford procedure in athletes: an objective analysis of function. *Am J Sports Med* 1988; 16: 97-100.

Archive of SID