

//
//

()

*

CT

()

Case- Series

(0-4)

(% /)

%

%

(P< /)

%

%

CT Scan

()

()

()

()

:0 :

:I ()

mm :II .()

mm :III

:IV

°
%

Case-Series

(Confidence Interval=C.I)

Chi-square

Odd's ratio

Archive of SID

Osteoinduction

(% /) (% /)

/

C Arm

(% /)

(% /)

T₁₂ T₁₁ T₁₀
L₁-S₁

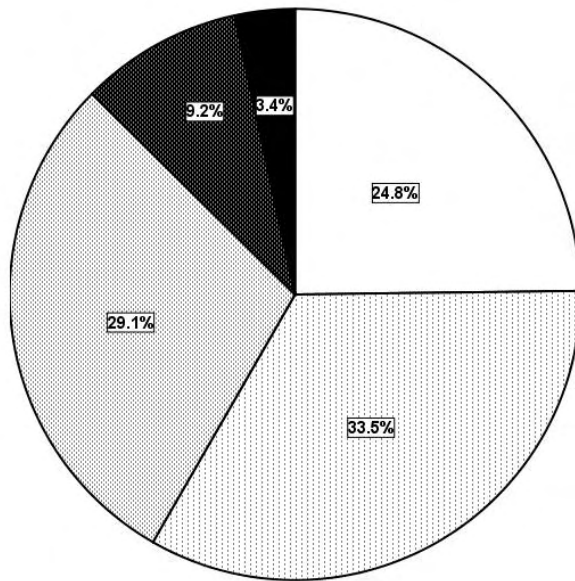
(% /)

(% /)

/

/

/



- grade0
- ▨ grade1
- ▩ grade2
- ▧ grade3
- grade4



(P< /)

/

/

/

(P< /)

/

.(OR= /)

.(P< /)

.(OR=)

O.R		
	(%)	(%)
P< /	(/)	(/)
	(/)	(/)
/ P< /	(/)	(/)
	(/)	(/)
P< /	(/)	(/)
	(/)	(/)

()
 % /
 (%)

()
 (% /)
 (% /)
 ()
 (% /)

(%)	(%)	(%)	(%)
()	()	()	()
()	()	()	()

/ ± /

/ ± /

/ ± /

/ ± /

()

AP

()

.()

CT

%

%

%

.()

REFERENCES

1. Youkilis AS, Quin DJ, McGillicuddy JE, Papadopoulos SM. Stereotactic Navigation for Placement of Pedicle Screws in the Thoracic Spine. *Neurosurgery* 2001; 48(4): 771-9.
2. Davne SH, Myers DL. Complications of lumbar spinal fusion with transpedicular instrumentation. *Spine* 1992; 17(Suppl6): S184-9.
3. West JL 3rd, Ogilvie JW, Bradford DS. Complications of the variable screw plate pedicle screw fixation. *Spine* 1991; 16: 576-9.
4. Lonstein JE, Denis F, Perra JH, Pinto MR, Smith MD, Winter RB. Complications associated with pedicle screws. *J Bone Joint Surg Am* 1999; 81: 1519-28.
5. Vanichkachorn JS, Vaccaro AR, Cohen MJ, Cotler JM. Potential large vessel injury during thoracolumbar pedicle screw removal. A case report. *Spine* 1997; 22: 110-3.
6. Bransford R, Bellabarba C, Thompson JH, Henley MB, Mirza SK, Chapman JR. The safety of fluoroscopically-assisted thoracic pedicle screw instrumentation for spine trauma. *J Trauma* 2006; 60(5): 1047-52.
7. Choma TJ, Denis F, Lonstein JE, Perra JH, Schwender JD, Garvey TA, et al. Stepwise methodology for plain radiographic assessment of pedicle screw placement: a comparison with computed tomography. *Spinal Disord Tech* 2006; 19(8): 547-53.
8. Liau KM, Yusof MI, Abdullah MS, Abdullah S, Yusof AH. Computed tomographic morphometry of thoracic pedicles: safety margin of transpedicular screw fixation in malaysian malay population. *Spine* 2006; 31(16): 545-50.
9. Fisher CG, Sahajpal V, Keynan O, Boyd M, Graeb D, Bailey C, et al. Accuracy and safety of pedicle screw fixation in thoracic spine trauma. *J Neurosurg Spine* 2006; 5(6): 520-6.

-
10. Karim A, Mukherjee D, Gonzalez-Cruz J, Ogden A, Smith D, Nanda A. Accuracy of pedicle screw placement for lumbar fusion using anatomic landmarks versus open laminectomy: a comparison of two surgical techniques in cadaveric specimens. *Neurosurgery* 2006;59 (Suppl 1): ONS 13-9.

Archive of SID