
Archive of SID

E-mail: rafiei99@yahoo.com .

(DEM)

()

()

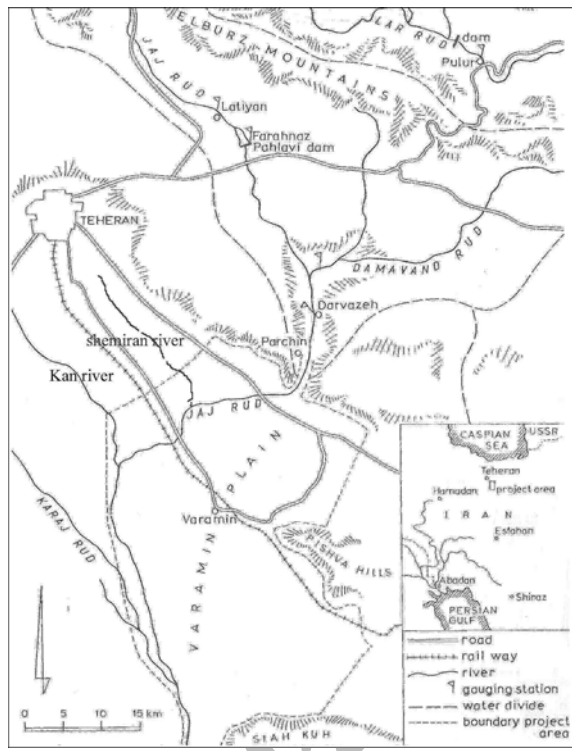
m2) / A

(A1.2

$$P^3 < 2T^4$$

Q

- precipitation
Temperature



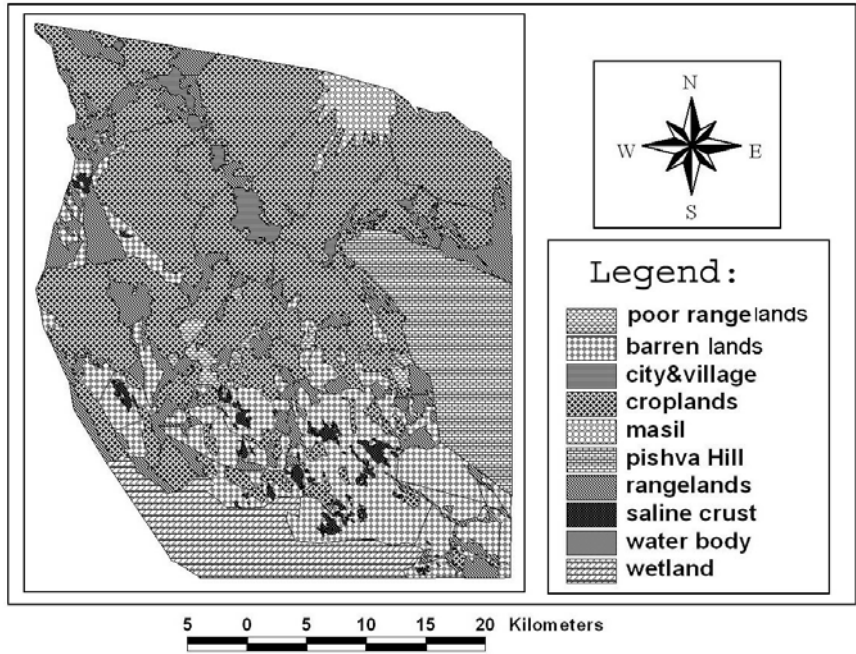
TM

()

Archive of SID

()

Interpolation
Post Classification
Maximum Likelihood



TM

EC

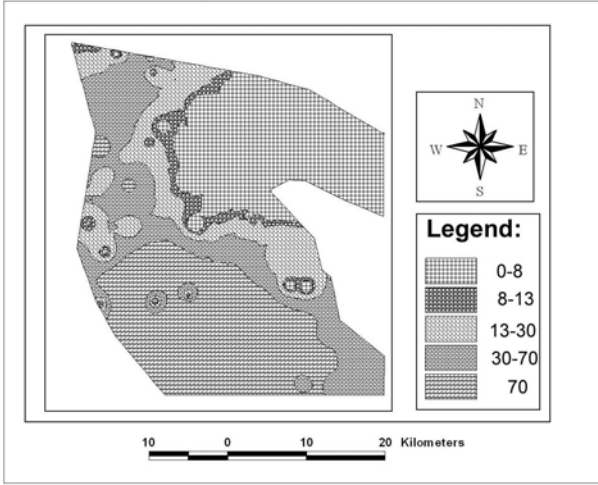
GIS

SAR EC

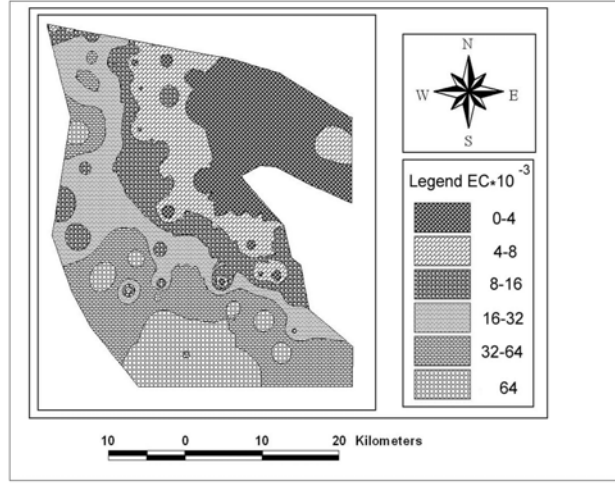
SAR

Archive 01

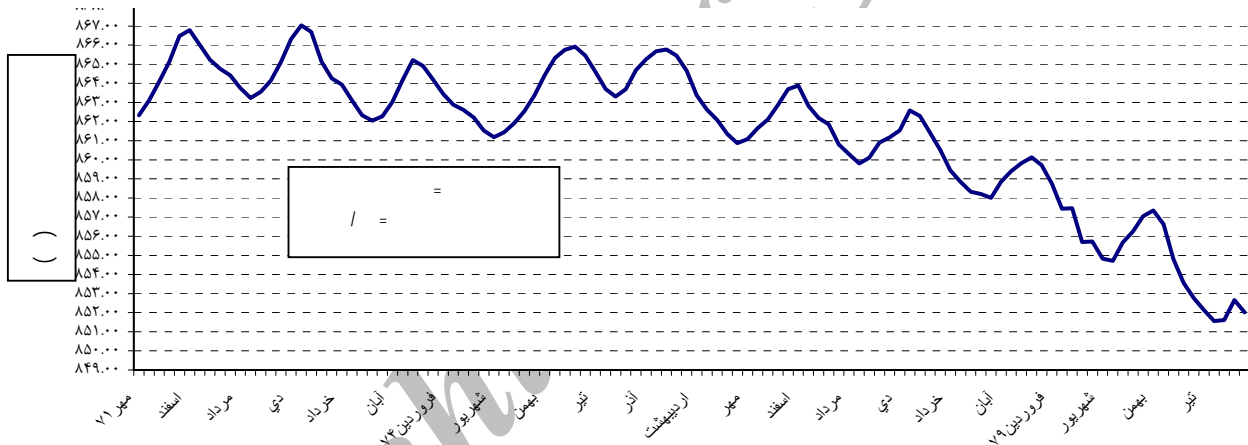
Map of SAR Soil



Map of EC Soil



SAR EC



$r =$

()

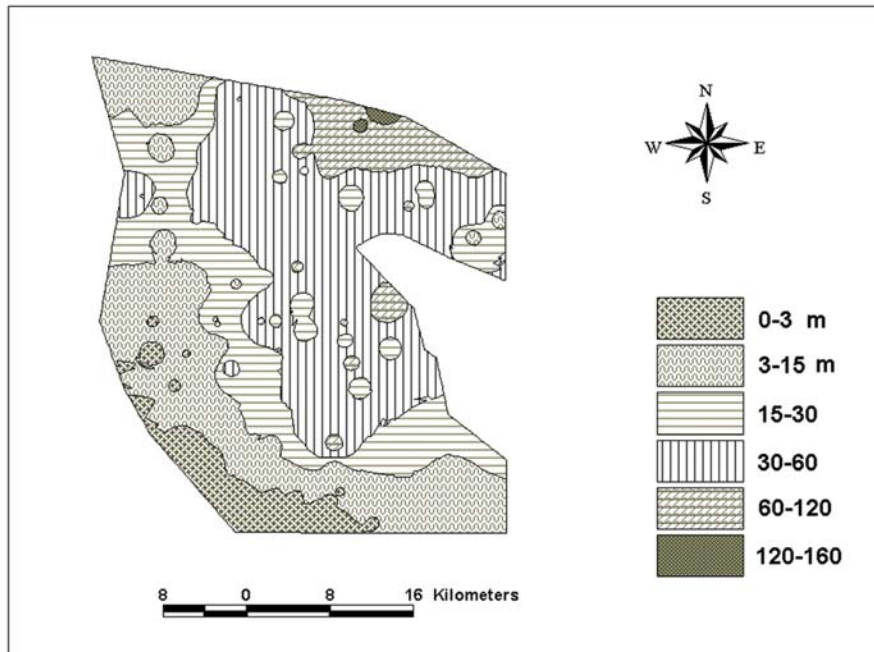
SAR EC

$$Y=170+8T \pm 15$$

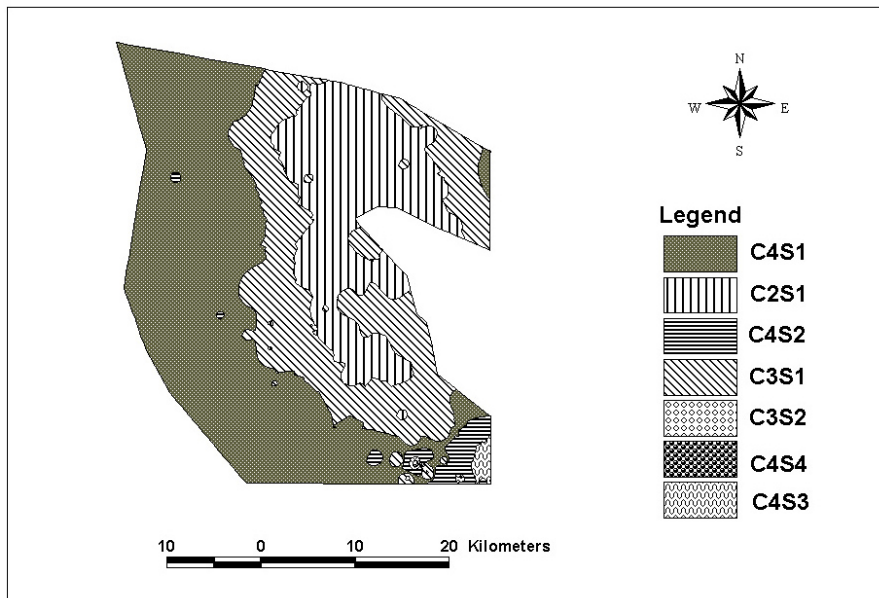
Y
T

: ()

()



(<)



() C4S3 C4S2,C4S1 :
 ()
 C4
 S3 S2 , S1

()

() :

$$W = \sum_1^{12} (Q_i \times TDS_i \times N \times 3600 \times 24 \times 10^{-6})$$

=W

lit/s ,

=Q_i

=TDS_i

=N mg/lit

Archive of SID

C3S1

() C2S1

C3S1

() C2S1

Archive of SID

()

()