
*

(/ / : // :)

Archive of SID

	()	
<i>Hilaria mutica</i>	<i>Bouteloua eriopoda</i>	
		()
	<i>Prosopis glandulosa</i>	
<i>Psathyrostachys juncea</i>	()	(' ' ' ')
()		()
		()
	()	()
		()
()	()	<i>Agropyron cristatum</i>
	<i>Bouteloua</i>	
	<i>Pascopyrum</i>	<i>gracilis</i>
()	()	<i>smithii</i>
	<i>Gutierrezia</i>	
)	<i>sarothrae</i>
		(
	<i>Festuca ovina</i>	<i>Stipa tenacissima</i>
()		()
		()
		()

...

()

(.)

pH.
/)
/ ppm (

/
ppm

Ag. trichophorum *Agropyron intermedium*
Goebelia alopecuroides

Archive of SID

(-)

/ / / /

/ / / /

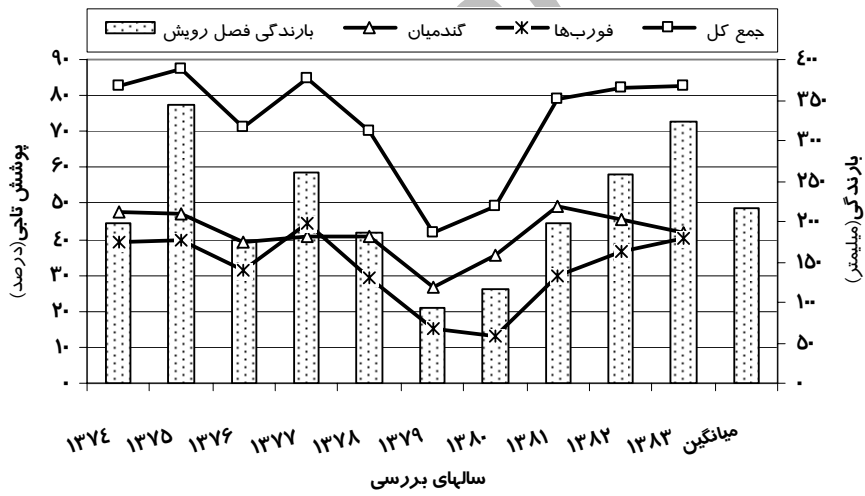
()

)

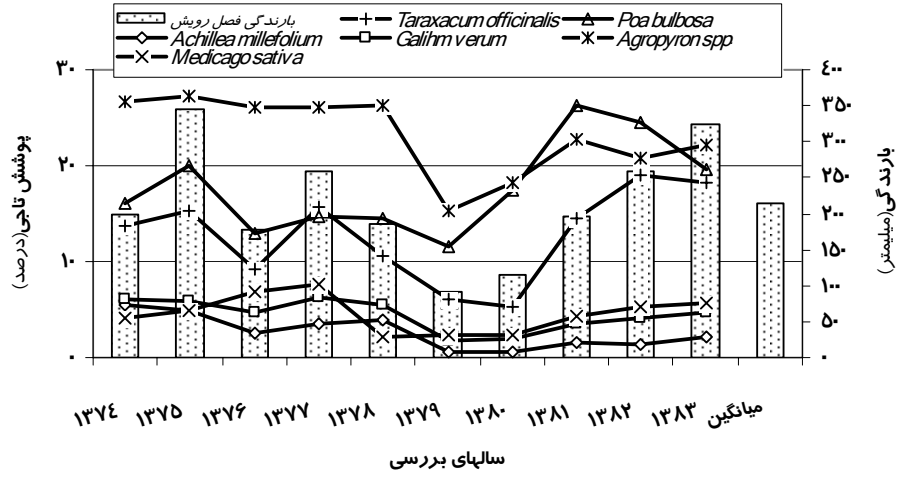
()

()

Agropyron ، Agropyron intermedium
 Poa bulbosa trichophorum



، Medicago sativa ، Taraxacum officinalis
 Achillea millefolium Galium verum



Archive of

...

									R²	a	b
<i>Agropyron spp.</i>	/	/	/	/	/	/	/ *		/	/	/
<i>Galium verum</i>	/ *	/ *	/ *	/ *	/ *	/ *	/ *		/	/	/
<i>Medicago sativa</i>	/	/	/ *	/	/	/ *	/		/	/	/
<i>Taraxacum officinalis</i>	/ *	/ *	/ *	/	/	/ *	/		/	/	/
	/ *	/ *	/ *	/ *	/ *	/ *	/ *		/	/	/
	/ *	/ *	/ *	/ *	/	/	/ *		/	/	/
	/	/ *	/ *	/	/	/	/ *		/	/	/

Y = a + bX

b

a

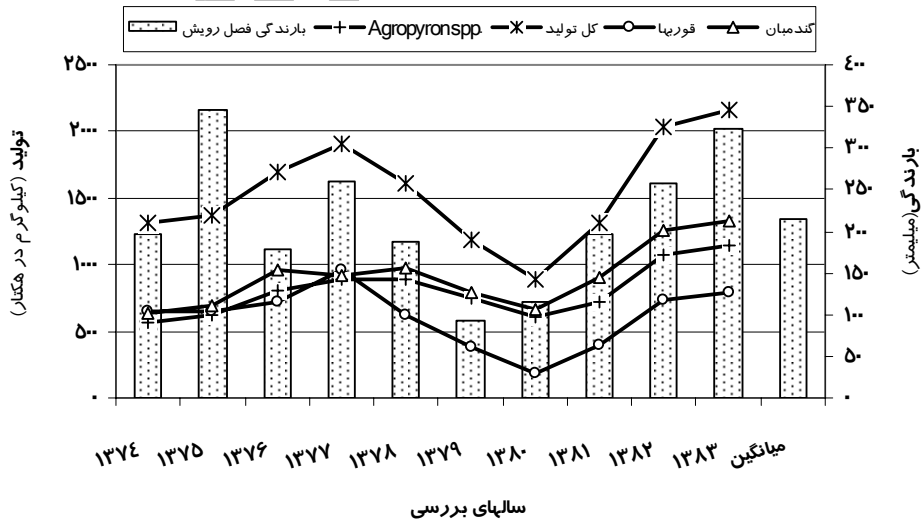
*

Agropyron Agropyron intermedium) R² (trichophorum

Medicago sativa R²

Taraxacum officinalis R²

Agropyron Agropyron intermedium Gaium verum trichophorum (/)



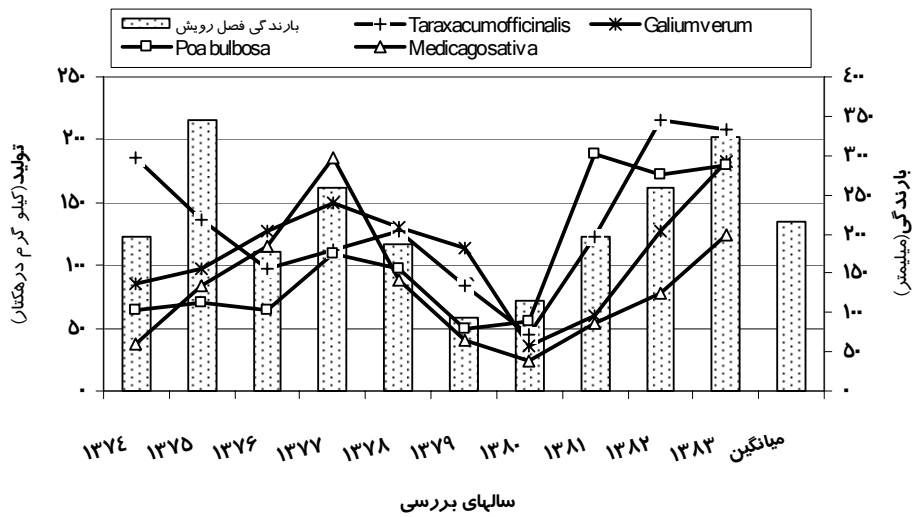
Achillea

()

millefolium

Galium , Taraxacum officinalis ()

Medicago sativa verum



Taraxacum officinalis

R²

Medicago sativa

										R^2	a	b
<i>Agropyron spp.</i>	/	/	/	/	/	/	/	/	/			
<i>Galium verum</i>	/	/	/	/	/	/	/	/	/			
<i>Medicago sativa</i>	/	/	/	/	/	/ *	/	/	/	/	/	/
<i>Taraxacum officinalis</i>	/	/ *	/	/ *	/	/	/	/	/	/	/	/
	/	/ *	/	/	/	/	/	/	/	/		/
	/ *	/ *	/ *	/	/	/	/	/	/	/		/
	/	/	/	/	/	/	/	/	/			

$$Y = a + bX$$

b

a

*

()

‘

‘

‘

‘

‘

‘

‘

.(‘ ‘ ‘ ‘)

‘ (‘ ‘ ‘)

()

()

‘

Archive of SID

‘

.()

.(‘ ‘ ‘ ‘)

‘

‘

‘

‘

Archive of SID

7- Albertson, F. W., A. Riegel, & J. L. Launchbaugh, 1953. Effects of different intensities of clipping on shortgrasses in West Central Kansas. *Ecology* 34: 1-20.

8- Albertson, F.W. & G.W. Tomanek, 1965. Vegetation changes during a 30-year period on grassland communities near Hays, Kansas. *Ecology*, 1965, 46: 714-720.

...

- 9- AnLin, G. U., L. Holzworth & J. F. Yun, 1994. Establishment of new entries of *Psathyrostachys junceus* in arid and semi- arid areas in Inner Mongolia. *Grassland of China*. 1994, No. 5, 12 – 14.
- 10- Beck, R. F., M. Nsinamwa, R. Santos, & R. D. Pieper, 1999. Dynamics of *Gutierrezia sarothrae* with drought and grazing. *People and rangelands: building the future. Proceedings of the VI International rangelands congress, Townsville, Queensland, Australia, 19-23 July, 1999. Volume 1 and 2., 1999, pp. 502-503.*
- 11- Chamrad, A.D. & T.W. Box, 1965. Drought-associated mortality of range grasses in south Texas. *Ecology*, 1965, 46: 780-785.
- 12- Coates, D. B., 1997. The recovery of Nixon Sabi grass pastures following severe drought. *Tropical Grasslands*, Vol. 31, No. 1, pp. 67-72.
- 13- Cook, C. W., & P. L. Sims, 1975. Drought and its relationship to dynamics of primary productivity and production of grazing animals. *Symp. on Eval. and Mapp. of Trop. Afr. Ranglds.*, pp. 163-170. ILCA, Addis Ababa.
- 14- Currie, P. O., & G. Peterson, 1966. Using growing-season precipitation to predict crested wheatgrass yields. *J. Range Manage.* 19: 284-288.
- 15- Dahl, B. E., 1963. Soil moisture as a predictive index to forage yield for the sandhills range type. *J. Range Mangt.* 16: 128-132.
- 16- Draw, D. L., 1999. Vegetation changes on the welder wildlife Refuge, Texas. *People and rangelands: building the future. Proceedings of the VI International rangelands congress, Townsville, Queensland, Australia, 19-23 July, 1999. Volume 1 and 2., 1999, pp. 256-258.*
- 17- Eneboe, E. J., B. F. Sowell, R. K. Heitschmidt, M. G. Karl, & M. R. Haferkamp, 2002. Drought and grazing: IV. Blue grama and western wheatgrass. *J. Range Manage*, Vol. 55, No. 2, pp. 197-203.
- 18- Gu, A. L., L. Holzworth, & J. F. Yun, 1994. Establishment of new entries of *Psathyrostachys junceus* in arid and semi- arid areas in Inner Mongolia. *Grassland of China*. 1994, No. 5, 12 – 14.
- 19- Hennessy, D. W., D. J. McLennan, P. J. Williamson & S. G. Morris, 1998. Changes in characteristics of pastures in the coastal subtropical when grazing by cattle during of low rainfall. *Australian Journal of Experimental Agriculture*, vol. 38, No. 8, pp. 813-820.
- 20- Herbel, C.H., F.N. Ares & R.A. Wright, 1972. Drought effects on a semidesert grassland range. *Ecology*, 1972, 53: 1084-1093.
- 21- Hulett, G. K. & G. W. Tomanek, 1969. Forage Production on a Clay Upland Range Site in Western Kansas. *J. Range Manage*, Vol. 22, No. 4, pp. 270-276
- 22- Hutchings, S.S. & G. Stewart, 1953. Increasing forage yields and sheep production on intermountain winter ranges. *U.S. Dept. Agric. Circ.*, 1953 (925).
- 23- Koç, A., 2001. Autumn and spring drought periods affect vegetation on high elevation rangelands on Turkey. *J. Range Manage*, Vol. 56: 622-627.
- 24- Le Houerou, H. N., 1996. Drought tolerant and water efficient trees and shrubs for rehabilitation of tropical and subtropical arid lands of Africa and Asia. *Land Husbandry*. 1996, 1: 43-64
- 25- Ligan, Y., J. Cheng & S. ChangDong, 1998. Research on drought indexes for hebage of natural grassland on north slope of Tianshan mountains. *Arid Land Geography*, Vol. 21, No. 4, pp. 68-73.

-
- 26- Martin, S., 1966. The Santa Rita experimental range. U.S.D.A. Forest Serv., 1966. (Research Paper RM-22).
- 27- Moyo, C. S., J. L. N. Sikosana & J. Gambiza, 1995. Recovery of eutrophic rangeland after a severe drought. Rangelands in sustainable biosphere. Proceedings of the Fifth International rangeland congress, Salt Lake City, Utah, USA, 23-28 July 1995. Volume 1 Contributed presentations., 1996, pp. 385-386.
- 28- Navarro, J. M. , D. Galt, J. Holechek, J. McCormick, & F. Molinar, 2002. Long-term impacts of livestock grazing on Chihuahuan Desert rangelands. *J. Range Manage.* Vol. 55, No. 4, pp. 400-405.
- 29- Nedjraoui, D., 1995. Alfa (*Stipa tenacissima* L.): its strategy of adaptation to ecological conditions. Rangelands in a sustainable biosphere. Proceedings of the Fifth International Rangeland Congress, Salt Lake City, Utah, USA, 23-28 July, 1995. Volume 1: Contributed presentations., 1996, pp. 391-392, 5 ref.
- 30- O'Connor, T. G., 1995. Transformation of a savanna grassland by drought and grazing. *Africa Journal of Range and Forage Science.* 1995, 12: 2 , 53-60 ; 26 ref.
- 31- Potvin, M. A. & A. T. Harrison, 1984. Vegetation and litter Changes of a Nebraska sandhills prairie protected from Grazing. *J. Range Manage.* 37(1): 55-58
- 32- Rauzi, F., 1964. Late-spring herbage production on shortgrass rangeland . *J. Range Manage.* Vol. 55: 210-212.
- 33- Samuel, M. J. & R. H. Hart, 1994. Sixty-one years of secondary succession on rangelands of the Wyoming High Plains. *J. Range Manage.* 47(3):184-191,
- 34- Smoliak, S., 1956. Influence of climatic conditions on forage production of shortgrass rangeland. *J. Range Manage.* 9: 89-91.
- 35- Sneva, F. A. & D. N. Hyder, 1962. Forecasting range production in eastern Oregon. *Oregon Agric. exp. Stn Bull.*, 1962 (588): 11 p.
- 36- Sternberg, M., V. K. Brown, G. J. Masters, & I. P. Clarke, 1999. Plant community dynamics in a calcareous grassland under climate change manipulations. *Plant Ecology*, Vol. 143, No. 1, pp. 29-37.
- 37- Tomanek, G. W., & F. W. Albertson, 1957. Variations in cover, composition, production and roots of vegetation on two prairies in western Kansas. *Ecol. Monogr.* 27: 267-281.

Effect of precipitation on cover and production of rangeland plants in Polour

M. Akbarzadeh^{*1}, M.R. Moghadam², A. Jalili³, M. Jafari⁴ and H. Arzani⁵

¹ Ph.D. Scholar of range management, Faculty of Natural Resources, University of Tehran, I.R. Iran

^{2,4} Professor, Faculty of Natural Resources, University of Tehran, I.R. Iran

³ Associate Professor in Research, Research Institute of Forests and Rangelands, I.R. Iran

⁵ Associate Professor, Faculty of Natural Resources, University of Tehran, I.R. Iran

(Received 17 April 2005, Accepted 16 January 2006)

Abstract

The major portion of rangelands of our country is laid in arid and semi-arid regions. Fluctuation in precipitation year by year is an important factor that influences the vegetation cover. In dry years that a decrease in rainfall is experienced ranges are damaged and the cover and production is reduced. The decrease in forage production exerts more pressure on ranges. This study was conducted in ten years in Polour with the aim of examining the effect of decrease in precipitation on the canopy cover and production in Polour. The canopy cover and production was measured every year in permanent and random plots, respectively. Figures on precipitation were collected from nearby stations. With a considerable decrease in seasonal rainfall in first years of the study, a dry period began that continued until 2001 while 2000 was the driest year in this period. Results show that most of plant species are affected by rainfall fluctuation. The vegetation cover and production declined in dried years and a meaningful relationship between rainfall level and the amount of canopy cover of many species was observed. The total canopy cover of species in wet years was two times greater than it was in the driest year. The forage production was also influenced by fluctuation in precipitation, and the correlation between these two concerning certain species was statistically significant. However, various species reacted differently to the rainfall decline in terms of cover and production. In general, precipitation in the growth season had a greater effect on the cover and production in some species. Based on rainfall data in this period it was possible to anticipate change in plant's cover and production. Total forage production in wet year was 2.5 times greater than production in the driest year. This ratio was 2 in grasses and approximately 5 in forbs.

Keywords: Semi-arid rangelands, Precipitation, Canopy cover, Forage production, Polour

* Corresponding author:

Tel: 021-44195901-5

, Fax: 021-44196575

E-mail: akbar@rifr-ac.ir