

---

Archive of SID

( III : III : ) \*

(Mg Na K Mn Al Zn Sb Pb Ni Cu Cr Co)

Sr As

Ni



۴۴°،۵۹′،۵۱″    ۴۴°،۴۷′،۲۴″  
۳۹°،۱۱′،۲۷″    ۳۹°،۰′،۲۱″

Q<sub>t</sub>    Q<sub>al</sub>    Q<sub>r</sub>  
) UT ( ) OMq<sup>2</sup> ( ) t

ETM<sup>+</sup>

...

(

( )

)

(

Cd As

Al Fe Zn Sr Sn Sb Pb Ni Cu Cr Co

Mg Ca Na K Mn

( )

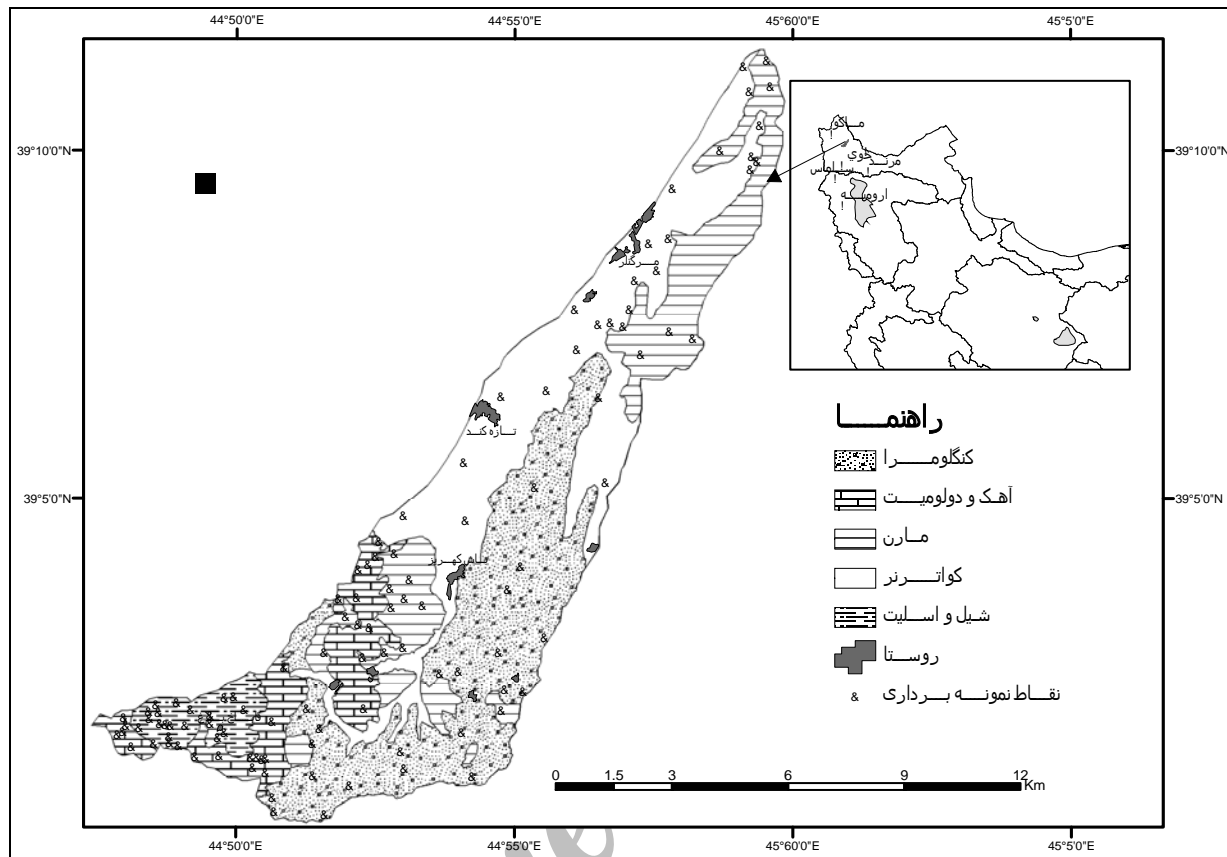
ICP- AES ICP- MS

HNO<sub>3</sub> HF)

(HCL HClO<sub>3</sub>

)

/		Q <sub>al</sub>		
/		Q <sub>f</sub>		
/		Q <sub>t</sub>		
/		t		
/		QPL		
/		OMs	)	
/		OMq <sup>2</sup>	(	
/		UT		
/		LT		



( )

$$Z_{jk} = a + W_1 X_{1k} + W_2 X_{2k} + \dots + W_n X_{nk} \quad ( )$$

( )

$$W_i = \frac{Z_j - a}{\sum_{k=1}^n X_{ik}} \quad ( )$$

( )

Q / ( Press's Q NG) (NG-1)  
 Press's

Q ( )

$$press's Q = \frac{[N - (nK)]^2}{N(K-1)} \quad ( )$$

n N  
 K

( ) 1 ( )

F

F / /

$$i) * j) = ( j i )$$

$$) / ( j ) = ( j )$$

Discriminant loadings  
 Potency index

Hit ratio

( )

Kruskal – Wallis

( )

( ) ( )

( ) (Median ± MAD) ( )

MAD Median

Kolmogorov

Shapiro – Wilks - Smirnov

:( )

MAD =  $\frac{1}{n} \sum_{i=1}^n |x_i - x_{median}|$  ( )

( )

( ) Box's M

( ) P

Boxplot

Quantile – Quantile plot

Collinearity

Multicollinearity

i

( )

:

$$MD_i = ((X_i - \bar{X})^T C^{-1} (X_i - \bar{X}))^{1/2} \quad (1)$$

( )

Na K Pb Cu Cr

$$\bar{X} \quad i \quad X_i$$

$$C \quad ( \quad )$$

(MD)

t

$$\frac{MD^2}{df}$$

( ) t

(df)

t

( )

Box's M

(Median ± MAD)

( )

Cd Sr As Ca

( )

$$\frac{MD^2}{df}$$

(df)

t

( )

( )

( )

$$\frac{MD^2}{df}$$

|

( / )

t

( /

/

/

/

( / ) KMO

( )

Bartlett

( )



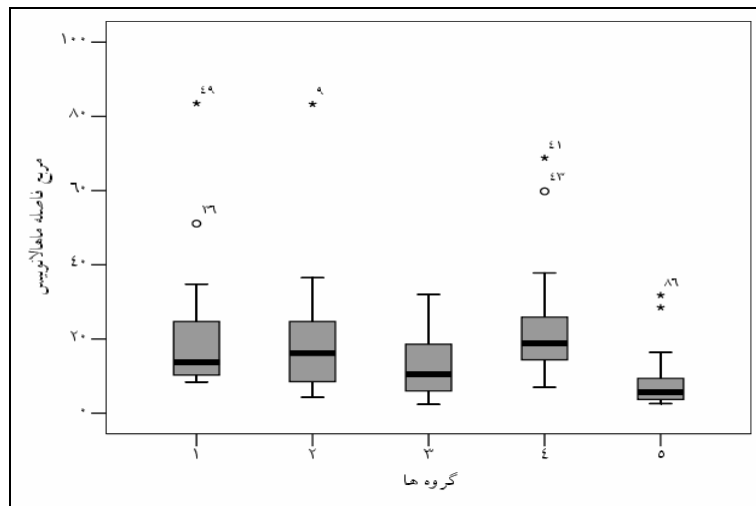
( ) / / / / /

( )

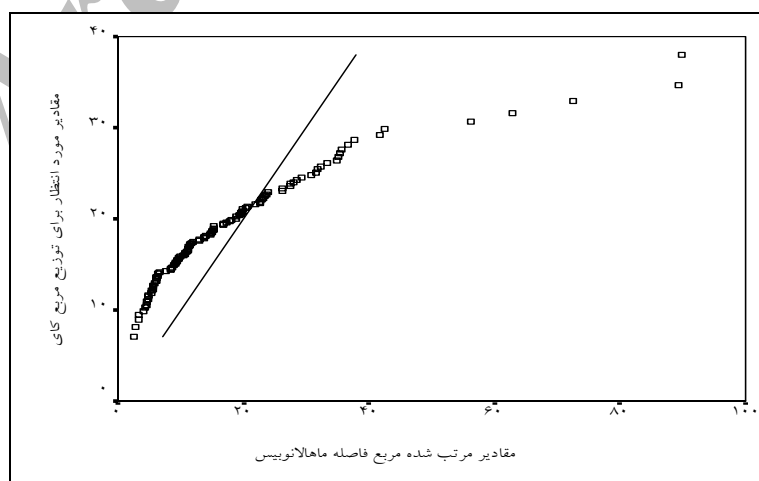
Sn Ni Fe Co Ca Al

( )

Median± MAD						( )
	1/74	3/01	1/08	6/45	6/30	(%) Al
	254/00	2/70	29/15	12/10	19/97	(ppm) As
	26/70	0/11	4/16	1/08	9/09	(%) Ca
	0/56	0/08	0/08	0/17	0/19	(ppm) Cd
	41/90	7/10	5/33	22/65	21/74	(ppm) Co
	525/00	40/00	106/73	220/50	231/91	(ppm) Cr
	64/30	14/00	9/74	37/35	37/66	(ppm)Cu
	7/21	1/51	0/79	4/11	3/97	(%) Fe
	2/15	0/62	0/33	1/39	1/36	(%) K
	5/63	0/93	0/11	2/11	2/64	(%) Mg
	1110/00	200/00	190/32	1110/00	767/05	(ppm) Mn
	1/57	0/07	0/27	0/99	0/96	(%) Na
	502/00	36/40	73/73	155/00	153/61	(ppm) Ni
	29/30	5/90	3/13	12/75	13/11	(ppm) Pb
	1/10	0/25	0/20	0/54	0/51	(ppm) Sb
	3/30	0/70	0/55	1/70	1/74	(ppm) Sn
	3230/00	103/00	324/41	307/50	361/52	(ppm) Sr
	124/00	34/00	14/96	76/00	75/19	(ppm) Zn



	/	/	Ni	/	/	/	Cu	/	/	/	Al
/	/	/	Pb	/	/	/	Fe	/	.	/	As
/	/	/	Sb	/	/	/	k	/	/	/	Ca
	/	/	Sn	/	/	/	Mg	/	/	/	Cd
/	/	/	Sr	/	/	/	Mn	/	/	/	Co
/	/	/	Zn	/	/	/	Na	/	/	/	Cr



		Kruskal - Wallis				Shapiro - Wilk		Kolmogorov - Smirnov		
			H		F					
17/46	0/06	0/001	18/97	0/000	0/07	0/001	0/90	0/003	0/11	Al
1/38	0/72	0/000	30/03	0/217	1/47	.	0/40	.	0/28	As
17/33	0/06	0/021	11/00	0/001	4/80	.	0/89	.	0/16	Ca
1/06	0/64	0/001	18/27	0/000	0/72	.	0/77	.	0/2	Cd
18/00	0/00	0/000	07/00	0/000	19/13	.	0/94	0/01	0/1	Co
0/10	0/20	0/000	08/31	0/000	20/22	0/074	0/98	0/2	0/06	Cr
3/01	0/33	0/000	49/33	0/000	16/90	0/038	0/97	0/061	0/08	Cu
16/02	0/06	0/000	27/19	0/000	8/43	.	0/9	.	0/10	Fe
6/93	0/14	0/000	29/18	0/000	9/28	0/438	0/99	0/2	0/06	K
4/71	0/21	0/000	00/47	0/000	37/48	.	0/93	.	0/13	Mg
7/80	0/13	0/000	20/69	0/000	9/41	.	0/9	.	0/13	Mn
3/12	0/32	0/000	41/98	0/000	14/27	0/128	0/98	0/2	0/07	Na
12/40	0/08	0/000	82/91	0/000	02/77	.	0/93	0/013	0/1	Ni
6/33	0/16	0/001	19/73	0/000	6/10	0/003	0/96	0/06	0/08	Pb
4/46	0/22	0/000	01/98	0/000	20/09	0/007	0/96	0/006	0/11	Sb
11/03	0/09	0/000	46/87	0/000	24/08	0/008	0/97	0/02	0/09	Sn
1/61	0/62	0/017	12/00	0/220	1/46	.	0/42	.	0/28	Sr
0/03	0/20	0/003	10/78	0/010	3/03	0/017	0/97	0/2	0/07	Zn

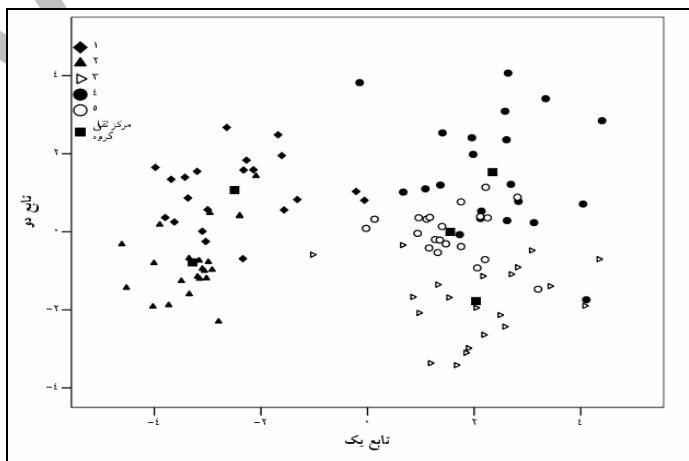
...

		F	Wilks' Lambda			
۸/۰۰	/	۰/۴۶۰	۰/۸۱۹	۰/۰۵	Al	
۳/۱۳	/	۰/۱۶۴	۰/۲۸۰	۰/۳۵	Sb	
۳/۵۱	/	۰/۰۱۴	۰/۱۹۶	۱/۰۹	Zn	
۵/۲۷	/	۰/۰۰۰	۰/۱۳۹	۲/۲۴	K	
۳/۶۱	/	۰/۰۰۰	۰/۰۸۵	۳/۶۴	Ni	
۶/۰۹	/	۰/۰۰۰	۰/۰۷۴	۴/۱۹	Mn	
۱/۹۸	/	۰/۰۰۰	۰/۰۶۱	۴/۷۲	Cu	
۶/۷۳	/	۰/۰۰۰	۰/۰۵۳	۵/۲۸	Co	
۲/۷۳		۰/۰۰۰	۰/۰۴۴	۵/۷۱	Cr	
۲/۲۶	/	۰/۰۰۰	۰/۰۳۰	۶/۰۶	Na	
۱/۹۸	/	۰/۰۰۰	۰/۰۲۰	۶/۷۶	Mg	
۴/۰۱	/	۰/۰۰۰	۰/۰۱۸	۷/۳۹	Pb	

		Wilks' Lambda						
/	/	۰/۰۲	/	۰/۹۳	۶۶/۷۳	۶۶/۷۳	۶/۱۵	۱
/	/	۰/۱۳	۰/۰۸	۰/۷۸	۸۳/۱۶	۱۶/۴۳	۱/۵۱	۲
/	/	۰/۳۲	۰/۰۳	۰/۷۱	۹۴/۲۹	۱۱/۱۳	۱/۰۳	۳
/	/	۰/۶۶	۰/۰۱	۰/۵۹	۱۰۰/۰۰	۵/۷۱	۰/۵۳	۴

	/			/	/		
				/	/		
	/		/		/		
	/	/	/				
	/		/				
			.				
			.				
	/	/	.	/	/		
	.		.	/	/		
	/		/		/		
	/	/	/				
	/		/				

F										
		۴	۳	۲	۱	۴	۳	۲	۱	
۵۲/۷۷	۰/۲۲۷	۰/۰۱۱	۰/۰۰۰	۰/۰۰۰	۰/۲۱۶	-۰/۴۳	۰/۰۱	-۰/۰۲	۰/۵۷	Ni
۳۷/۴۸	۰/۱۶۱	۰/۰۰۰	۰/۰۰۶	۰/۰۱۵	۰/۱۴۰	-۰/۰۹	-۰/۲۴	۰/۳۰	۰/۴۶	Mg
۲۵/۲۲	۰/۱۰۸	۰/۰۰۰	۰/۰۰۰	۰/۰۰۰	۰/۱۰۷	۰/۰۹	۰/۰۶	۰/۰۴	۰/۴۰	Cr
۲۵/۰۹	۰/۱۰۸	۰/۰۰۳	۰/۰۰۰	۰/۰۰۳	۰/۱۰۲	۰/۲۳	-۰/۰۳	۰/۱۴	-۰/۳۹	Sb
۲۴/۵۸	۰/۰۷۵	۰/۰۰۲	۰/۰۱۷	۰/۰۰۰	۰/۰۵۶	-۰/۲۶	۰/۱۹	-۰/۱۲	۰/۳۳	Sn
۱۹/۱۳	۰/۰۸۲	۰/۰۰۴	۰/۰۰۴	۰/۰۰۲	۰/۰۷۲	-۰/۰۱	-۰/۰۳	-۰/۲۵	۰/۳۰	Co
۱۶/۹۰	۰/۰۷۳	۰/۰۰۰	۰/۰۰۰	۰/۰۱۱	۰/۰۶۲	۰/۱۹	۰/۱۰	-۰/۰۸	۰/۲۹	Cu
۱۴/۲۷	۰/۰۶۱	۰/۰۰۲	۰/۰۰۱	۰/۰۰۱	۰/۰۵۷	۰/۱۲	۰/۱۷	-۰/۲۲	۰/۲۱	Na
۹/۴۱	۰/۰۴۰	۰/۰۰۱	۰/۰۰۳	۰/۰۰۸	۰/۰۲۸	۰/۰۵	-۰/۰۷	۰/۲۲	-۰/۰۶	Mn
۹/۲۸	۰/۰۴۰	۰/۰۰۷	۰/۰۲۰	۰/۰۰۲	۰/۰۱۱	۰/۰۱	۰/۰۱	-۰/۰۴	۰/۰۴	K
۸/۴۳	۰/۰۲۱	۰/۰۰۰	۰/۰۰۸	۰/۰۰۶	۰/۰۰۸	۰/۳۴	۰/۴۲	۰/۱۲	-۰/۱۳	Fe
۶/۱۰	۰/۰۲۶	۰/۰۰۱	۰/۰۱۰	۰/۰۰۰	۰/۰۱۵	۰/۱۷	۰/۳۹	-۰/۰۵	-۰/۲۹	Pb
۵/۷۲	۰/۰۰۱	۰/۰۰۰	۰/۰۰۰	۰/۰۰۰	۰/۰۰۱	۰/۱۸	۰/۳۳	-۰/۲۲	-۰/۰۵	Cd
۵/۵۷	۰/۰۲۴	۰/۰۰۲	۰/۰۱۲	۰/۰۰۸	۰/۰۰۲	-۰/۰۲	۰/۳۱	۰/۱۶	۰/۰۲	Al
۴/۸۵	۰/۰۱۶	۰/۰۰۲	۰/۰۱۰	۰/۰۰۱	۰/۰۰۲	۰/۰۹	۰/۳۰	۰/۰۱	-۰/۱۵	Ca
۳/۵۳	۰/۰۱۵	۰/۰۰۰	۰/۰۱۱	۰/۰۰۴	۰/۰۰۰	-۰/۲۰	-۰/۳۰	۰/۰۹	-۰/۰۵	Zn
۱/۴۷	۰/۰۰۱	۰/۰۰۱	۰/۰۰۰	۰/۰۰۰	۰/۰۰۰	-۰/۰۲	۰/۲۷	-۰/۱۹	۰/۱۱	As
۱/۴۶	۰/۰۱۱	۰/۰۰۰	۰/۰۰۱	۰/۰۰۸	۰/۰۰۳	-۰/۱۱	-۰/۰۴	-۰/۰۳	-۰/۰۱	Sr



Pb

Kruskal – Wallis

Sr Cd As

F

/ /

/

( )

Kruskal – Wallis

/

( )

( )

Kruskal – Wallis

(Sr As)

)

(

As

( ) Sr Cd

( )

Wilks'

Lambda

/

)

press's Q

( × / )

(

F

/

( / )

Wilks' Lambda

Al





- 
- 5- Chiang, L. H., Pell, R.J., & Seasholtz, M. B., 2003. Exploring process data with the use of robust outlier detection algorithms. *Journal of Process Control* 13, 437–449.
  - 6- Chong, I.G., & Jun, C. H., 2005. Performance of some variable selection methods when multicollinearity is present. *Chemometrics and Intelligent Laboratory Systems*, 78: 103–112.
  - 7- Collins, A. L. & Walling, D. E., 2004. Documenting catchment suspended sediment sources: problems, approaches and prospects. *Progress in Physical Geography*, 28: 159–196.
  - 8- Collins, A.L., Walling, D.E., Sickingabula, H.M.,& Leeks, G.J.L., 2001. Suspended sediment source fingerprinting in a small tropical catchment and some management implications. *Applied Geography*, 21: 387-412.
  - 9- Collins, A.L.,& Walling, D.E., 2002. Selecting fingerprint properties for discriminating potential suspended sediment sources in river basins. *Journal of Hydrology*, 261: 218-244.
  - 10- Foster, I.D.L.,& Lees, J.A., 2000. Tracers in geomorphology. In: Foster, I.D.L. (Ed.). *Tracers in Geomorphology*. Wiley, Chichester, pp. 3-20.
  - 11- Foster, I.D.L.,& Walling, D.E., 1994. Using reservoir deposits to reconstruct changing sediment yields and sources in the catchment of the Old Mill Reservoir, South Devon, UK, over the past 50 years. *Hydrological Sciences Journal*, 39:, 347-368.
  - 12- Garrad, P. N.,& Hey, R. D., 1989. Sources of suspended and deposited sediment in a Broadland river. *Earth Surface Processes and Landforms*, 14: 41-62.
  - 13- Grimshaw, D.L.,& Lewin, J., 1980. Source identification for suspended sediment. *Journal of Hydrology*, 47: 151 162.
  - 14- Hair, J.F., Andersen, R.E., Tatham, R.L.,& Black, W. C., 1998. *Multivariate Data Analysis*. Prentice Hall, Upper Saddle River, New Jersey.
  - 15- Kiang, M. Y., 2003. A comparative assessment of classification methods. *Decision Support Systems*, 35: 441– 454.
  - 16- Loughran, R.J.,& Campbell, B.L., 1995. The identification of catchment sediment sources. In: Foster, I.D.L., Gumell, A.M., Webb, B.W. (Eds.). *Sediment and Water Quality in River Catchments*. Wiley, Chichester, pp. 189-205.
  - 17- Næs, T., & Mevic. B. H., 2001. Understanding the collinearity problem in regression and discriminant analysis. *J. Chemometrics* 15, 413–426.
  - 18- Oldfield, F.,& Rummary, T. A., Thompson, R., Walling, D.E., 1979. Identification of suspended sediment sources by means of mineral magnetic measurements: some preliminary results. *Water Resources Research*, 15: 211-219.
  - 19- Owens, P.N., Walling, D.E.,& Leeks, G. J. L., 2000. Tracing fluvial suspended sediment sources in the catchment of the River Tweed, Scotland, using composite fingerprints and a numerical mixing model. In: I.D.L. Foster (Ed.). *Tracers in geomorphology*. Jon Wiley, Chichester, pp. 291-308.
  - 20- Peart, M. R.,& Walling, D. E., 1988. Techniques for establishing suspended sediment sources in two drainage basins in Devon, UK: a comparative assessment. In M. P. Bordas, & D. E. Walling, *Sediment budgets: IAHS Publication No. 174: 269–279*.
  - 21- Reimann, C., Filzmoser, P.,& Garrett, R. G., 2005. Background and threshold: critical comparison of methods of determination. *Science of the Total Environment*, 346: 1– 16.

...

- 22- Reimann, C., & Filzmoser, P., 2000. Normal and lognormal data distribution in geochemistry: death of a myth. Consequences for the statistical treatment of geochemical and environmental data. *Environ Geol.* 39/9:1001–1014.
- 23- Stone, M., & Saunderson, H., 1992. Particle size characteristics of suspended sediment in southern Ontario rivers tributary to the Great Lakes. *Geological Society Special Publication*, 57: 31-45.
- 24- Tabachnick, B.G. & Fidell, L.S., 1996. *Using Multivariate Statistics*. Harper Collins College Publishers, New York.
- 25- Takken, I., Beuselinck, L., Nachtergaele, J., Govers, G., Poesen, J., & Degraer, G., 1999. Spatial evaluation of a physically-based distributed erosion model (LISEM). *Catena*, 37: 431-447.
- 26- Walden, J., Slattery, M.C., & Burt, T.P., 1997. Use of mineral magnetic measurements to fingerprint suspended sediment sources: approaches and techniques for data analysis. *J. of Hydrol.*, 202: 353–372.
- 27- Wall, G. J., & Wilding, L. P., 1976. Mineralogy and related parameters of fluvial suspended sediments in Northwestern Ohio. *Journal of Environmental Quality*, 5: 168-173.
- 28- Wallbrink, P.J., Olley, J.M., Murray, A.S., & Olive, L.J., 1998. Determining sediment sources and transit times of suspended sediment in the Murrumbidgee River, NSW, Australia using fallout <sup>137</sup>Cs and <sup>210</sup>Pb. *Water Resour. Res.* 34 (4): 879–887.
- 29- Walling, D. E., & Woodward, J. C., 1995. Tracing sources of suspended sediment in river basins: a case study of the River Culm, Devon, UK. *Marine and Freshwater Research*, 46, 327–336.
- 30- Walling, D. E., 2005. Tracing suspended sediment sources in catchments and river systems. *Science of the Total Environment*, 344: 159– 184.
- 31- Walling, D. E., Owens, P. N., & Leeks, G. J. L., 1999. Fingerprinting suspended sediment sources in the catchment of the River Ouse, Yorkshire, UK. *Hydrological Processes*, 13: 955–975.
- 32- Walling, D.E., Peart, M.R., Oldfield, F., & Thompson, R., 1979. Suspended sediment sources identified by magnetic measurements. *Nature*, 281: 110–113.
- 33- Walling, D.E., Russell, M.A., Hodgkinson, R.A., & Zhang, Y., 2002. Fine-grained sediment budgets for two small lowland agricultural catchments in the UK. *Catena*, 47: 323-353.
- 34- Walling, D.E., & Collins, A.L., 2000. *Integrated assessment of catchment sediment budgets: A technical manual*. University of Exeter, 168p.
- 35- Yu, L., & Oldfield, F., 1993. Quantitative sediment source ascription using magnetic measurements in a reservoir system near Nijar, S.E. Spain. *Earth Surface Processes and Landforms*, 18: 441-454.

## Determining a suitable subset of geochemical elements for Separation of lithological types of Poldasht waterspreading station basin

Sh. Hakimkhani<sup>\*1</sup>, H. Ahmadi<sup>2</sup>, J. Ghayoumian<sup>3</sup>, S. Feiznia<sup>4</sup> and M. R. Bihamta<sup>5</sup>

<sup>1</sup> Assistant professor, University of Uromia, I. R. Iran

<sup>2</sup> Professor, Faculty of Natural Resources, University of Tehran, I. R. Iran

<sup>3</sup> Associate professor of Soil and Water Conservation Research Center, I. R. Iran

<sup>4</sup> Professor, Faculty of Natural Resources, University of Tehran, I. R. Iran

<sup>5</sup> Professor, Faculty of Animal and Agronomy Sciences, University of Tehran, I. R. Iran

(Received 2006 June 19, Accepted 2005 Oct 11)

### Abstract

Because of many problems associated with traditional procedures for identifying sediment sources, fingerprinting techniques, based on physical, chemical and organic properties of sediment and source materials, are increasingly being used as a valuable and effective alternative approach to assemble such information. The first step involved in the application of this approach is the selection of a composite of diagnostic properties which clearly discriminate sediment sources. In this study, it is tried to choose a suitable composite of geochemical elements with the ability to discriminate lithological types in subareas of main subbasin of Pouldasht water spreading station basin, located in Makoo County, West Azarbaijan Province. The lithological maps were prepared, and lithological types as sediment sources were classified in five groups. Totally, 106 samples representing lithological characteristics, including uses, slope steepness and surface and subsurface erosions, were selected. Samples below 63  $\mu\text{m}$  were separated and concentration of 18 geochemical elements was measured. Then, after being assured of the absence of outliers and insubstantial contribution of non-normality and inequality of covariance matrices to the results, the discriminant analysis was used to select the suitable subset of elements from the 18 geochemical elements. In order to eliminate the effects of multicollinearity on the discriminant analysis results, a subset (composite fingerprint) of elements, which enjoys both characteristics of least multicollinearity and highest discriminating power, was selected. The identified subset included 12 elements (Al, Co, Cr, Cu, Na, Zn, Mn, Ni, Pb, Mg, Sb and K) and was able to discriminate and classify over 87.7 percent of soil samples correctly. Meanwhile, all the 18 elements were ranked based on their relative ability to distinguish lithological groups, among which Ni was the most important and As and Sr played the least important role.

**Key words:** Geochemical elements, Sediment sources, Lithological types, Poldasht, Source fingerprinting, Discriminant analysis

\* Corresponding author:

Tel: 0914-4172019

, Fax: 0441-2770489

Email: Hakimkhani@yahoo.com