
NDSI

MODIS

(// : // :)

%

NOAA

()

MODIS

:

(NDSI)

(.)

)

.(

.()

()

-

()

MODIS

()

()

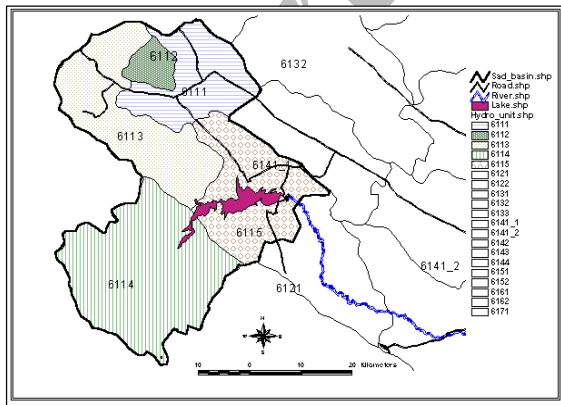
.()

()

-)

.()

(



()

Rio Grande
γ- Karasu Basin

MODIS

() MODIS

NOAA

(.)

()

MODIS

MODIS

MODIS

GIS RS

UTM

MODIS

UTM 39N

(.)

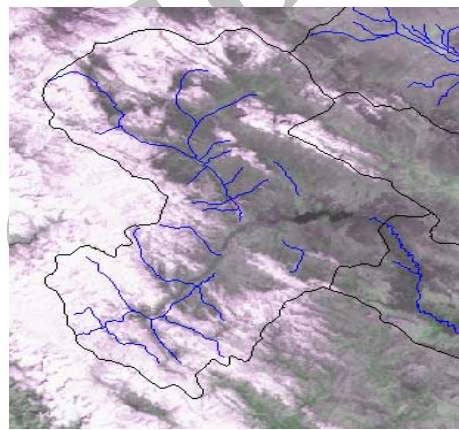
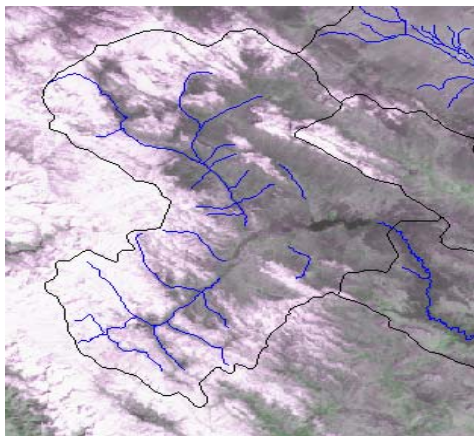
MODIS

(.)

Archive of SID

DEM
vector

()



(

)

(vector)

$$NDSI = \frac{MODIS4 - MODIS6}{MODIS4 + MODIS6} \quad ()$$

MODIS6 MODIS MODIS4
MODIS

NDSI

()

()

()

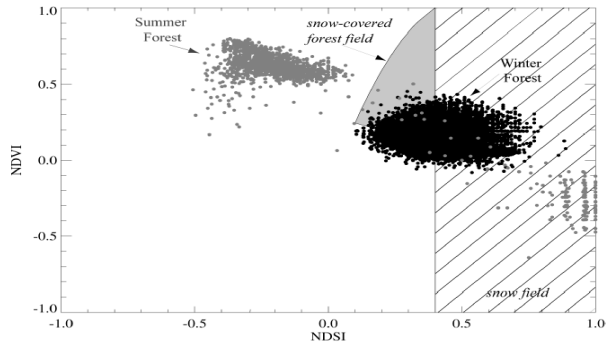
/

NDSI

NDSI

()

1 - Normalized Difference Snow Index



()

() () /
()

() NDVI NDSI
/ NDSI

() NDVI
()

() () () ()

NDSI ()

() ()

() NDSI ()

()
() NDSI

NDSI
()

%
NDSI

() NDSI

%
/ NDSI

()

NDSI

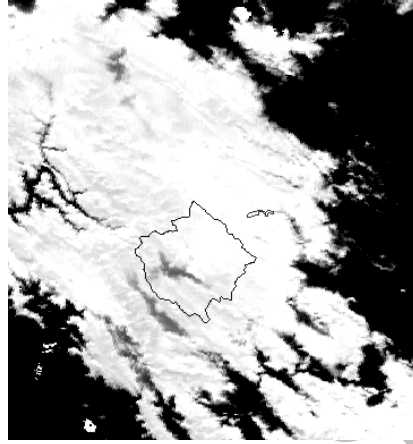
()
Recode

()

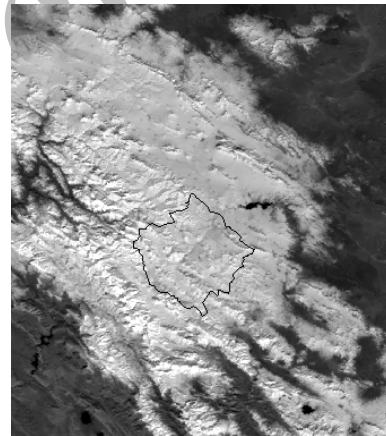
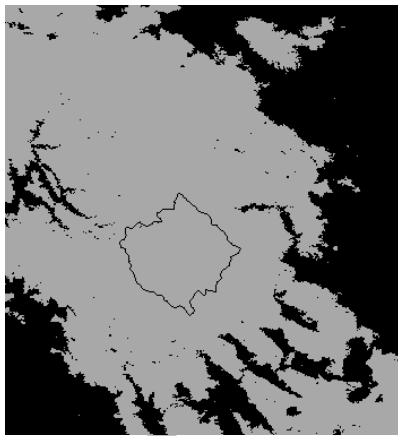
1 - Normalized Difference Vegetation Index

()

NDSI



NDSI



()

()

MODIS

NDSI

... **NDSI** **MODIS**

() ()
MODIS

()

SNOTEL
NOHRSC

MODIS

MODIS

NDSI

)

(

()

SNOTEL
()

()

MODIS

MODIS

()

()

)

(

()

()

()

NDSI

()

Archive of SID

() ()
() ()
() ()
() ()

MODIS

NOAA-AVHRR

4- Ackerman, S., Strabala, L., Menzel, P., Frey, R., Moeller, C., Gumley, L., Baum, B., Schaff, C., Riggs, G.A. & Welch, R., 1996. Discriminating Clear-Sky from cloud with MODIS, Algorithm Theoretical Basis Document (MOD35), Version 3.0., p. 109.

5- Brooks, K.N, Folliott, P.F., Gregersen, & H.M., Thames, J.L., 1991. Hydrology and management of watersheds, Snow Hydrology, Iowa State University.

6- Brooks, P.D., & Williams, M.W., 1998. Snowpack Controls on Nitrogen Cycling and Export in Seasonally Snow-Covered Catchments, International Conference on Snow Hydrology, Editors: Hardy, J., Albert, M., & Marsh, p., US Army Corps of Engineers, Cold Regions Research & Engineering Laboratory.

7- Cline, D., 1997. Snow surface energy exchanges and snowmelt at a continental, mid-latitude alpine site, Water Resour. Res., vol. 33, pp. 689-701, 1997.

8- Dozier, J., 2000. Remote Sensing of Alpine Snow Cover Invisible and Near-Infrared Wavelengths, NASA Goddard Space Flight Center, USA.

9- Earmenana, S. & Phillips, F., 2000. Using Natural Tracers to Improve Estimates of Ground water Recharge Resulting from Snowmelt, department of Earth and Enviroments Science, New Mexico, USA.

10- Emre, A., Akyu, Z., Ormanc, A.S., Ensoyc, A.S., & Orman, A.U., 2005. Using MODIS snow cover maps in modeling snowmelt runoff process in The eastern part of Turkey, Remote Sensing of Environment, Vol. 97, pp. 216 – 230

11- Engman, E.T. & Gurney, R.J., 1991. Remote Sensing in Hydrology, Chapman and Hall, Cambridge, London.

12- Fountain, A.G., Lewis, K.J., & Doran, P., 1998. Controls on Meltwater Production and Lake Level Rise in the McMurdo Dry Valley, International Conference on Snow Hydrology, (eds by Hardy, J. , Albert, M., & Marsh, p.), US Army Corps of Engineers, Cold Regions Research & Engineering Laboratory.

13- Gerland, S., Winther, J.G, Ørbæk, J.B., Øritsland, N.R., Blanco, A., & Ivanov, B., 1998. Physical and Optical Properties of Snow Covering Arctic Tundra on Svalbard and Its Impact

on Biota, International Conference on Snow Hydrology, (eds by Hardy, J. , Albert, M., and Marsh, p.), US Army Corps of Engineers, Cold Regions Research & Engineering Laboratory.

14- Gerry Jones, H.G., 1998. The Role of Snow in the Ecology of Seasonally Snow-Covered Ecosystems: A Review, International Conference on Snow Hydrology, Editors: Hardy, J. , Albert, M., & Marsh, p., US Army Corps of Engineers, Cold Regions Research & Engineering Laboratory.

15- Horne, F.E. & Kawas, M.L., 1997. Physics of the spatially averaged snowmelt process, *Journal of Hydrology*, No 191, p 179-207.

16- Klein A.G & Barnett, A.C., 2003. Validation of daily MODIS snow cover maps of the Upper Rio Grande River Basin for the 2000-20001 snow year, *Remote Sensing of Environment*, Vol. 86, pp. 162-176.

17- Klein, A.G., Hall, D.K. & Riggs, G.A., 1997. Improving the MODIS Global Snow-Mapping Algorithm, *IEEE International Geoscience and Remote Sensing Symposium Proceedings (IGARSS'97)*, pp.619-621.

18- Klein, A.G., Hall, D.K. & Riggs, G.A., 1998. Global Snow Cover Monitoring Using MODIS, *27th International Symposium on Remote Sensing of Environment*, pp. 363-366.

19- Lee, S., Klein, A.G. & Over, T.M., 2001. A Comparison of MODIS and NOHRSC snowcover products for simulating streamflow using the Snowmelt Runoff Model, <http://www.modis-snowice.gsfc.nasa.gov>.

20- Marsh, P. & Woo, M.k., 1985. Meltwater movement in natural heterogeneous snow covers, *Water Resource*, Vol. 21, pp. 1710-1716.

21- Pivot, F.C., Duguay, C.R., Brown, R.D., Duchiron, B. & Kergomard, C., 2002. Remote Sensing of Snow Cover for Climate Monitoring in the Canadian Subarctic: A Comparison Between SMMR-SSM/I and NOAA-AVHRR Sensors, 59th EASTERN SNOW CONFERENCE, Stowe, Vermont USA 2002.

22- Rango, A., Walker, A.E. & Goodinson, B.E., 2000. Snow and Ice, *Remote Sensing in Hydrology and Water Management*, (eds by Schultz, G.A. & Ergman, E.T.), Springer, Berlin.

23- Richarc, C. & Gratton, D.G., 2001. The Importance of the Air Temperature Variable for the Snowmelt Runoff Modelling Using the SRM Model, 58th EASTERN SNOW CONFERENCE, Ottawa, Ontario, Canada.

24- Sabins, F.F., 1999. *Remote Sensing: Principles and interpretation*, W.H. Freeman and Co., New York.

25- Sakamoto, T., Takahashi, M., Terajima, T., Nakai, Y., & Matsuura, Y., 1998. Comparison of Rainfall Season and Snowmelt Season in Relation to Carbon Discharge in a Small Steep Forested Watershed in Hokkaido, Northern Japan, International Conference on Snow Hydrology, (eds by Hardy, J. , Albert, M., & Marsh, p.), US Army Corps of Engineers, Cold Regions Research & Engineering Laboratory.

26- Schaneebeli, M., 2002. The Importance of Microstructure of snow in nature and Engineering, Southampton, Ashurst Lodge.

27- Stoffel, A., Brabec, B., & Stockli, U., 2001. Swiss Federal Institute for Snow and Avalanche Research, Davos , Switzerland.

28- Sui, J., & Koehler, G., 2001. Rain on Snow Induced Flood events in Southern Germany, *Journal of Hydrology*, Elsevier, pp. 205-220.

29- Timmerman, L.J. & Larney, F., 2001. *An Introduction to Wind Erosion Control*, Alberta Government, Alberta.

30- Tranter, M., & Jones, H.G., 1998. Chemical Processes in Seasonal Snowpacks, International Conference on Snow Hydrology, (eds by Hardy, J. , Albert, M., and Marsh, p.), US Army Corps of Engineers, Cold Regions Research & Engineering Laboratory.

31- White, J.A., & Szpaczynski, J.A., 1998. Application of Natural Process of Snow Metamorphism for Concentration and Purification of Fluid Wastes, International Conference on Snow Hydrology, Editors: Hardy, J., Albert, M., and Marsh, p., US Army Corps of Engineers, Cold Regions Research & Engineering Laboratory.

32- Zhang, Y., 2003. Modis and Snow-cover Map,

http://www.climate.eas.gatech.edu/yzhang/MODIS_snow.pdf.

33- Zhaoi, L. & Gray, D.M., 1998. Estimating Snowmelt Infiltration into Frozen Soils, International Conference on Snow Hydrology, (eds by Hardy, J. , Albert, M., & Marsh, p.), US Army Corps of Engineers, Cold Regions Research & Engineering Laboratory.

Archive of SID

Using MODIS Images and NDSI Index for preparation snow cover maps

B. Raygani^{*1}, S. Soltani Koupayi², S. J. Khajeddin² and S. Barati³

¹ M. Sc. Graduate of Combating Desertification, I.R.Iran

² Assistant Prof, Isfahan University of Technology, I.R.Iran

³ M. Sc. Student of Range Management, Isfahan University of Technology, I.R.Iran

(Received: 7 October 2006, Accepted: 21 April 2008)

Abstract

Over 40% of the northern hemisphere is covered with seasonal snow. Snow covered area is a huge water resource on most part of the world and mountainous areas. Snow-cover and its equivalent water, supplies 1/3 of the water requirements for farming and its land irrigation throughout the world. In most northern and alpine environments, snowmelt runoff is responsible for both the annual maximum instantaneous discharge and a major portion of the annual flow. The high albedo of snow coupled with its large areal extent makes it a strong influence on the Earth's radiation budget. Snow cover monitoring is necessary for climatologists. Therefore, continuous snow cover monitoring and survey of snow cover maps due to higher efficiency of snow cover in different studies is very necessary. The most efficient means of monitoring snow-cover extent is by remote monitoring from satellites. MODIS compared with other images like NOAA has better spatial resolution and more bands and is better for survey. In this research by MODIS data in Ghaleh-Shahrokh sub-basin, we prepared snow cover map. The results compared with real snow cover map and showed higher precision. Finally, these maps are used as basic maps in various cases such as estimation of snowmelt runoff.

Keywords: Remote Sensing, Satellite image, MODIS, Separate snow pixels, NDSI

* Corresponding author: Tel: +98 913 3044086 , Fax: +98 311 3912840 E-mail: b_ray@alumni.iut.ac.ir