

+*

pH

pH=

pH

SPSS15

pH

.SPSS15

KEY WORDS: Heavy metals, Solubility, Wastes, Lakan-Arak, SPSS15 software.

(PbS)

(ZnS)

(Fe₂S)

[] []

pH

(Cu ,Pb ,Zn ,Hg ,Cd)

pH

pH =

[]

:

)

(Se,Mo ,Mn ,Ni ,Pb ,Hg ,Cd ,As

(Cr Cu

[] (Zn ,Al ,Bo ,Fe)

SPSS15

[]

pH

[]

pH

:

[]

[]

[] / pH ,

pH

pH EPA 9045

(pH = /)

pH

pH

pH

					pH
					()
				/	()

Pb	Cd	Cu	Ni	Co	Zn	
/	/	/	/	/	/	

pH

/ pH=

pH

pH=

pH=

pH=

/ / / / /

pH

pH

pH

pH=

EPA 9045

pH EPA 9045

pH=

()
/ /
[] ()

pH=

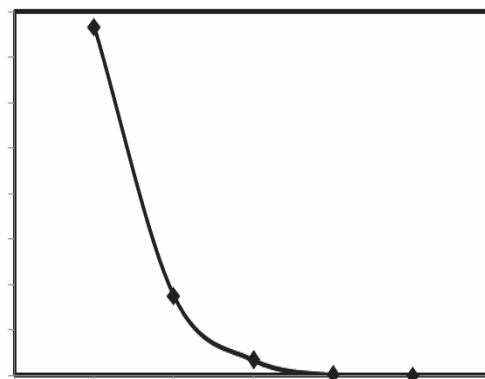
pH=

pH=

/ / /

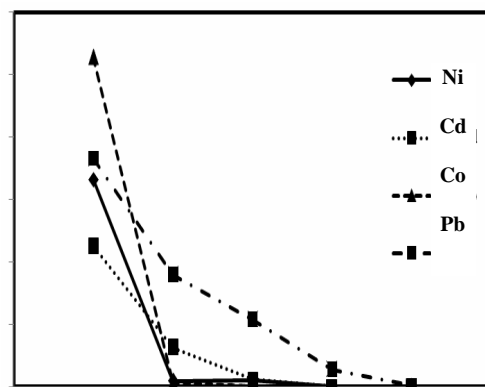
[]

)



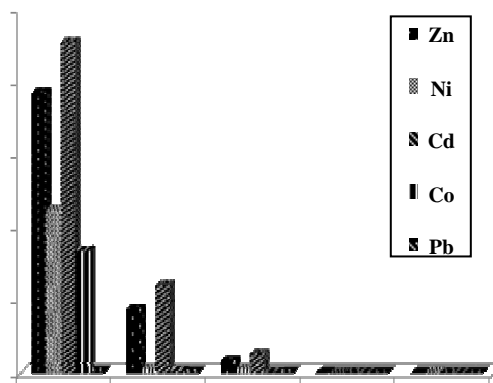
pH

pH



pH

pH



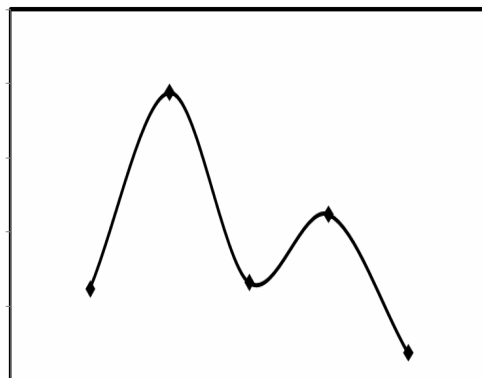
pH

pH

pH=

pH (

()

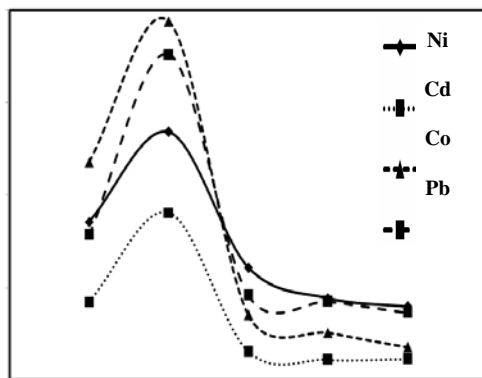


pH

()

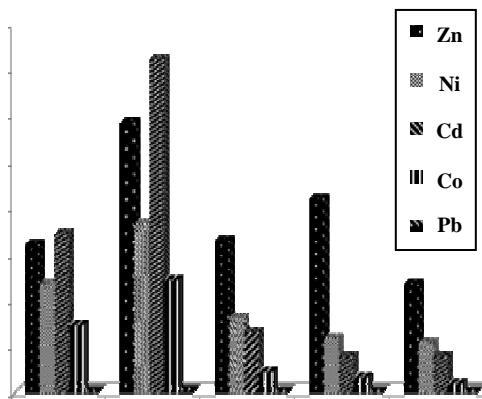
pH=

()



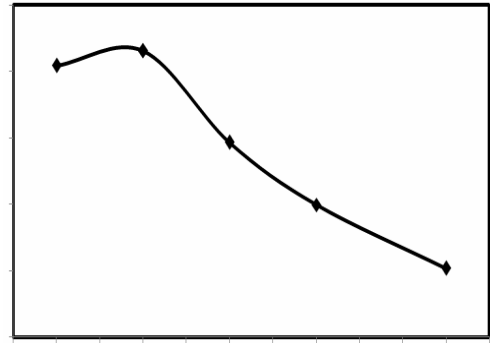
()

/ / /



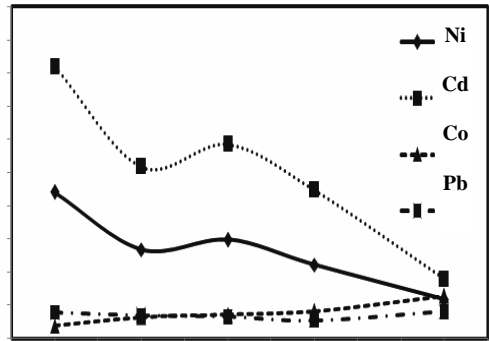
()

pH=



L/S

L/S



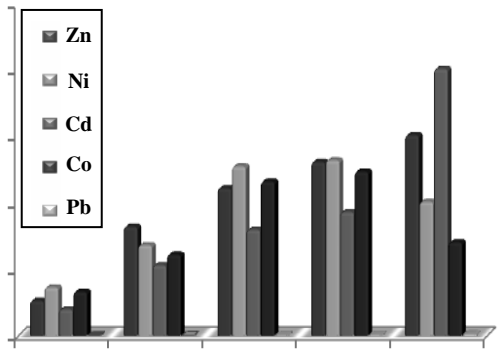
L/S

L/S

pH

SPSS15

pH



L/S

L/S

() Enter

() Forward

() Stepwise

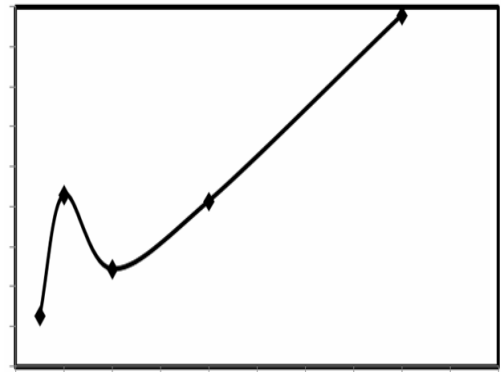
() Backward

() Remove

:

SPSS15

()



()

B

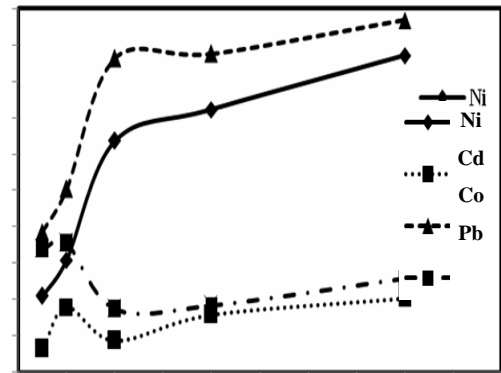
t

/

R = / pH + / T + / LS + / t

/

()

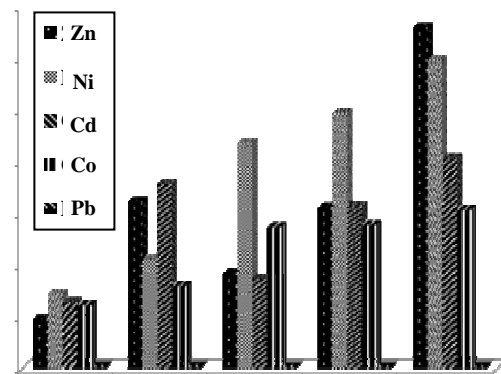


()

:

R = / pH + / T + / LS + / t

/



()

:

R = / pH + / T + / LS + / t

/	/	/	/

/	/	/	/

	(T)				
		Beta	B		
/	/		/	/	
/	/	/	/	/	pH
/	/	/	/	/	
/	/	/	/	/	
/	/	/	/	/	

	(T)				
		Beta	B		
/	/		/	/	
/	/	/	/	/	pH
/	/	/	/	/	
/	/	/	/	/	
/	/	/	/	/	

/	/	/	/

/	/	/	/

	(T)				
		Beta	B		
/	/		/	/	
/	/	/	/	/	pH
/	/	/	/	/	
/	/	/	/	/	
/	/	/	/	/	

	(T)				
		Beta	B		
/	/		/	/	
/	/	/	/	/	pH
/	/	/	/	/	
/	/	/	/	/	
/	/	/	/	/	

...

pH
pH=
:
pH
SPSS15

/	/	/	/

pH
pH

	(T)	Beta		B	
/	/		/	/	
/	/	/	/	/	pH
/	/	/	/	/	
/	/	/	/	/	
/	/	/	/	/	

pH

pH

pH

$$R = / \text{ pH} + / \text{ T} + / \text{ LS} + / \text{ t}$$

/

$$R = \text{pH} + / \text{ T} + / \text{ LS} + / \text{ t}$$

pH

// / :

// / :

[]

.()

- [2] Sally Brown, Rufus L. Chaney, Judith G. Hallfrisch, and Qi Xue, Heavy Metals in the Environment, Effect of Biosolids Processing on Lead Bioavailability in an Urban Soil, *J. Environ. Qual* (2003).
- [3] Francis Cottard, Potential Environmental Impacts of Mining, 1st MINEO Workshop 25-27, GBA, Vienna, Austria (2001).

()

[]

.()

- [5] Espiari, Sh., Rashchi, F., Sadrnezhad, S.K., Hydrometallurgical Treatment of Tailing with High Zinc Content, *Hydrometallurgy*, **82**, p. 54 (2006).
- [6] M.Deniz Turan, H.Soner Altundogan, Fikret Tumen. Recovery of Zinc and Lead from Zinc Plant Residue, *Hydrometallurgy*, **75**, p. 169 (2004).
- [7] Wang-Yan, Zhou-Chunshan, Hydrometallurgy Process for Recovery of Cobalt from Zinc Plant Residue, *Hydrometallurgy*, **63**, p. 225 (2002).
- [8] Safarzadeh, M. S., Moradkhani, D., Ojaghi Ilkhchi, M., Hamedani Golshan, N., Determination of Optimum Conditions for the Leaching of Cd-Ni Residue from Electrolytic Zinc Plant Using Statistical Design of Experiments, *Separation and Purification Technology*, **58**, p.367–376 (2008).
- [9] U.S.EPA.Report to Congress on Special Wastes from Mineral Processing Facilities. Volume II: Methods and Analyses. July 1990.
- [10] Altundogan, H.S., Erdem, M., Orhan, R., Ozer, A., Tumen, F., Heavy Metals Pollution of Zinc Leach Residue Discarded in Cinkur Plant. Tr., *J. of Engineering and Environmental Science*, **22**, p. 167 (1998).
- [11] Jorjani, E., Shahbazi, B., Environmental Assessment of Iranian Lead and Zinc Tailing Dams, Processing of the International Seminar on Mineral Processing Technology, February 22-24 (2007).
- [12] Van Gerven, T., Van Keer, E., Arickx, S., Jaspers, M., Wauters, G., Vandecasteele, C., Carbonation of MSWI-Bottom Ash to Decrease Heavy Metal Leaching in View of Recycling, *Waste Management*, **25**, p. 291 (2005).
- [13] Park C., Hydration and Solidification of Hazardous Wastes Containing Heavy Metals Using Modified Cementitious Materials, *Cement and Concrete Research*, **30**, p 429 (1999).

[]

.()

.()

[16] Black, Charles Allen; *Methods of Soil Analysis*; American Society of Agronomy: Madison, WI (1973).

[17] National Bureau of Standard Reference Material Catalog, Special Publication **260** (1986-87).

[18] <http://www.markazimet.ir/> .htm