

:-
:
/ / :
/ / :

Archive of SID

(P= /) U
(P= /)
(P= /)



Archive of SID

-
- 1- Assessment
 - 2- Maier



Archive of SID



Archive of SID

U

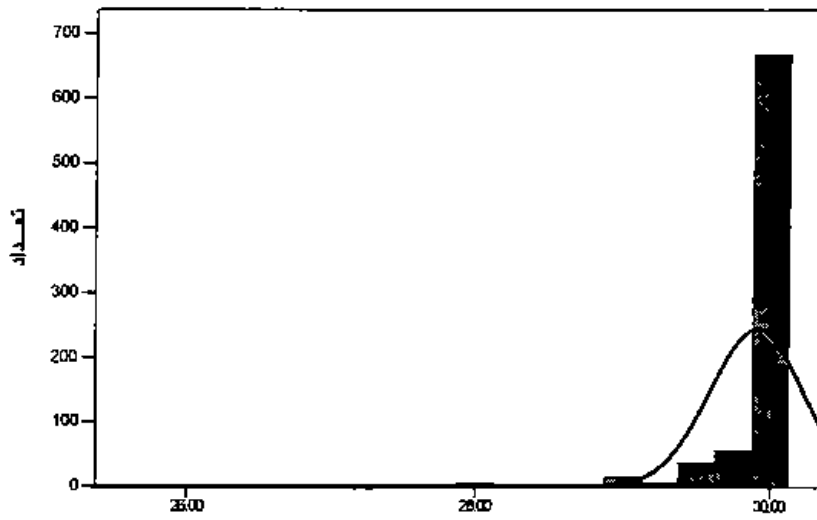
SPSS

	$r = / /$		/)
	$r = / /$		/		(
	$r = / /$		/		,
	$P < /$		/		

Z

SID ()

Mean = 29.9057
Std. Dev = 0.32233
N = 790



A

()

sig		P75	P50	P25						
* /	/					/	/	/	/	/

/ *

Archive of SID

<i>Sig</i>			/	
* /	/			
* /	/			
/	/			

/ *

<i>Sig</i>			/	
* /	/			

/ *

<i>Sig</i>			/	
* /	/			
* /	/			
* /	/			
* /	/			

/ *

/ / / /

(/)

()

Sig				
/	/			
/	/			

U

Z

Sig	Z	U					
/	/	/	/				
/	/	/	/				
/	/	/	/				

U

Z

Sig	Z	U					
/	/	/					
/	/						

U

Z

Sig	Z	U				
* /	/		/			
/	/		/			
* /	/	/	/			

U

Z

Sig	Z	U				
/	/					
/	/	/				

()

()
(/)
() () ()
() () ()

-
- 1- Silverman
 - 2- Tyson



() () .()

.(, ,)

() () .()

() () .

.(,)

".() . , .

".() . , .

-
- 1- Thornton
 - 2- Campbell
 - 3- Lee
 - 4- Stogdill



Archive of SID

"()".

"()".

"()".

"()".

"()".

"()".

"()".

"()".

"()".

"()".

"()".

-
-
20. Campbell, D.G;Lee, C.(1988). "Self Appraisal in performance Evaluation: Development versus Education". *Academy of management review: (13);PP:302-314.*
21. Certo, Samuel. C. (1992). "Modern management ". *Fifth Edition, Allyn and Bacon.*
22. Koontz, Donnell. (1988). "Essential of management". *Mc Graw – Hill. P:313.*
23. Pecheone, Raymond L& Chune Ruth R (2006). "Evidence in Teacher Education: "The performance Assessment for California Teacher(PACT)". *Journal of Teacher Education, V.(57), No(1), PP:22-36.*
24. Smith, D.E. (1986). "Training programs for performance Appraisal". *Academy of management Review, 1,PP:22-40.*
25. Thornton, G.C.III.(1980). "Psychometric of self appraisals of performance". *Personnel Psychology, 33,PP:263-271.*
26. Tyson, L.A;Silverman, S.(1994). "An analysis of physical education and non-physical education teachers at elementary and secondary levels on statewide teacher assessment". *Journal of Teaching in physical education, 14, PP : 85-98.*