

:-
/ / :
/ / :

1

± / , ± / , / ± /
/ ± /

(P> /)

t

Email : A.h.Barati@srttu.edu

Sys max_{k1000}

-
- 1 - Polar
 - 2 - Advance
 - 3 - Occult Blood
 - 4 - Clubbing
 - 5 - Pale
 - 6 - Menstrual Disorder
 - 7 - Spherocytosis

()

Kolmograv-Smirnov

t

$\alpha < /$

1 - Amenorrhea

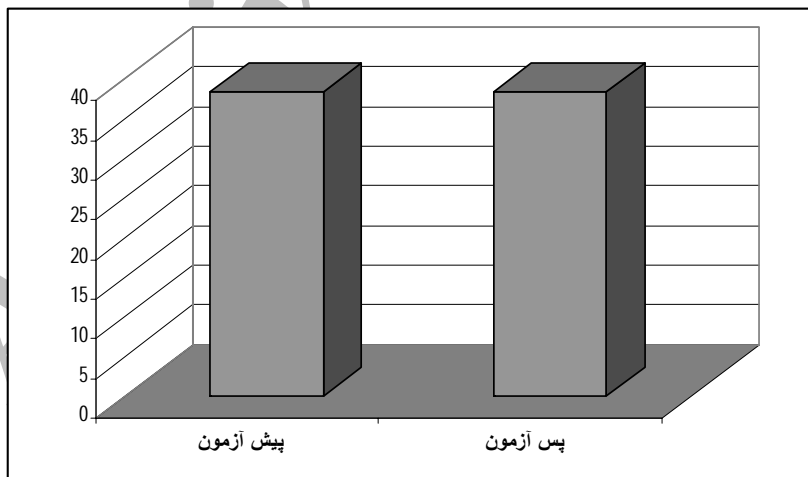
-

				/	/	/	/		
				/	/	/	/		
						/	/		
				/	/	/			
				/	/	/			
				/	/	/	/		
				/	/	/	/		
				/	/	/	/		
				/	/	/	/		
				/	/	/	/		
				/	/	/	/		
				/	/	/	/		
				/	/	/	/		
				/	/	/	/		
				/	/	/	/		

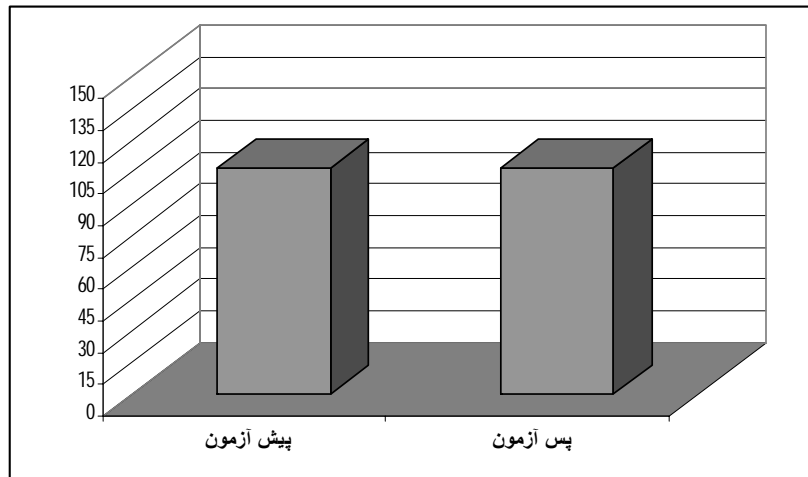
Archive of SID



()



()



()



()

P					
		/	/		
		/	/		
/	/	/	/		
		/	/		
/	/	/	/		
		/	/		
/	/	/	/		
		/	/		
P> /					

Archive of SID

()

() .()

1 - Malczewask



()

()

()

()

()

()

()

-
- 1 - Sport Anemia
 - 2 - Ferritin

-
1. Adams, W.Dconnor, F.Wild , R.Mc Graw Hill. (2001). "Hematologic concerns in the runner". *Test book of running medicine*. PP: 395-840.
 2. Aurelia, N.Elizabeth, A.Arendt, and Suzanne, s. Heht. Williams and Wilkins. (2001). "The female athlete". *Primary care sports medicine*. PP: 93-113.
 3. Brukner, P. Khan , K.Stuher Land, (2007). "Maximizing sporting performance : Nutrition". Mc Graw Hill professional publication. *Clinical sport medicine*. PP: 698-699.
 4. Berk, J. (2002). "Novaks' Gynecology". Mc Graw Hill publication . Section (4). Chapter (13).
 5. Eliakim, A. (2002). "Screening blood test in members of the Israel Olympic team". *Journal Sports physician fitness*. 39 : PP:117-122.
 6. Eichnor, R., Garrett, W.Kikendall, D.Williams' and Wilkins. (2001). "Hematologic problem in athlete". *Exercise and sport science* . PP:293-297.
 7. Fallon, KE. (2004). "Utility of hematological and iron-related screening in elite athletes". *Clinical Journal sport medicine*. 14(3) ; PP:145-142.
 8. Fallon,KE. Fallon, SK. (2001). "The acute phase response and exercise". *Journal of sport medicine*. (35) ; PP:170-173.
 9. Faintuch, JJ. Menezes, M.S. (1998). "Iron deficiency in female athletes". *Rev Hosp clin fac med Sao Paulo*; 53(4) : PP:181-3.
 10. Kasper, D.Braunwald , E. (2005). "Hematology and Oncology". *Harrison's text book of Internal Medicine 16th edition section 10* .
 11. Lloy. D, M. OTT,S. (2001). "Special concern of the female athletes". *Sport injury mechanisms, prevention and treatment*. Lippincott Williams and wilkins publication. PP:215-261.
 12. Mc Ardle, D.Katch, F. Lippincott Williams and Wilkin's.(2007). "Exercise Physiology". *Sixth edition*. PP:68-71.
 13. Malczewaska, J.Raczynski, G.Stupniciki, R. (2000). "Iron status in female athletes and in non-athletes". *Journal sport nutriotion Exercise*. 10(3); PP:260-276.
 14. Mccabe, M.Peura, D.kadakia, S.etal. (1986). "Gastrointestinal blood loss associated with running a marathon". *Dig Dis sci* ; 31, 1229.

-
15. Portal, S. Epstein, M. Dubnov, G. (2003). "Iron deficiency and anemia female athletes cause and risks". *Center of Sport medicine science and research, Wingate Institute, Jerusalem, Israel.* 149(10):PP:698-703.
16. Prentice, W. (2003). "Athletic Training". *Mc Graw Hill publication.* PP:130-132 and PP:955-956.
17. Romagnoli, E. Cristani, A. (2006). "Iron and performance in elite athletes". *Pubmed, recenti prog. Med* PP:45-61.
18. Schrago, G. (2006). "Sport and Iron in 2006". *Review medical Suisse.* (74). PP:1778-81.
19. Waller MF, Hymes Em. (1996). "The effect of Heart and Exercise on sweat iron loss". *Med sci sports exr.* 98.PP:197-203.

Archive of SID