

« »

:

(Ph.D) *

Cerebrovascular Research

Archive of SID

:



[]

/

()

[]

[]

()

in vivo

[]

in vitro

(in vivo)

(Global)

[]

[]

.(Global)

[]

[]

[]

Kawai

[]

[]

()

...

[]

[]

)

(

[]

[]

[]

[]

[]

)
[] (

[]

Tamura

[]

Penumbra

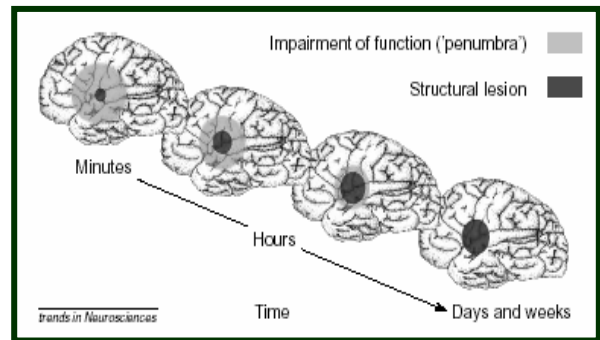
()
()

()

[] Penumbra

[]

[]



()

() Penumbra

[]

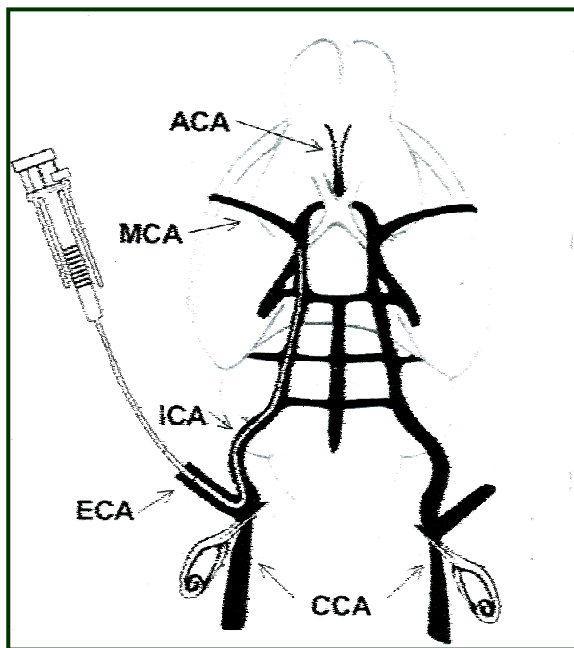
Rose Bengal

[]

Rose Bengal

() []

[]



[]

[]

- []

[]

ACA ECA CCA
MCA ICA

Koizumi

(Microspheres)

[]

[]

()

[]

Cerebrovascular

)

(

[]

Archive of SID

[]

(Ethicon -UK)

()

)

(

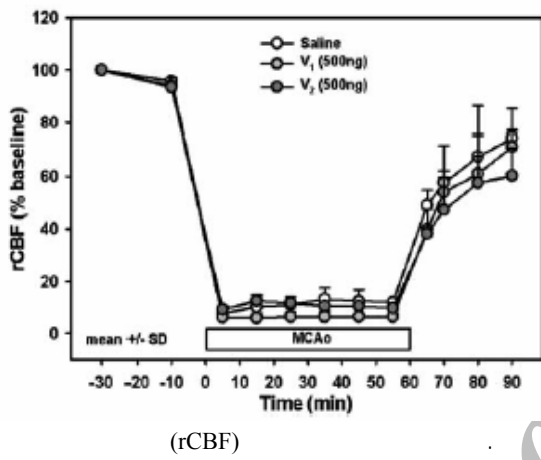
[]

[]

) Mastoid Bulla

(

.() []

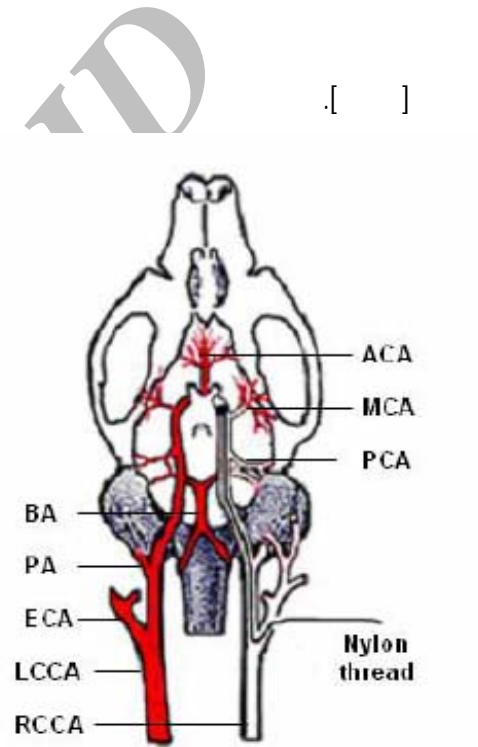


(rCBF)

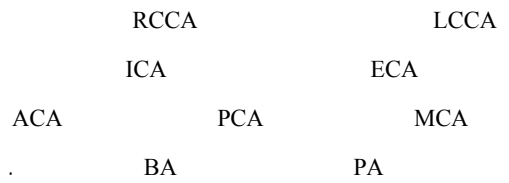
(MCAo)

V2 V1

[]



[]



.() []

)

(

[]

[]

() []

(Cresyl violet)
(Hematoxylin-Eosin)

[]

(Triphenyltetrazolium

chloride)

()

[]

[]

() ()

[]

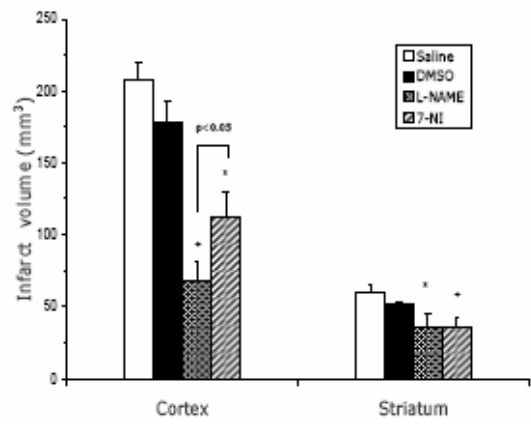
[]

[]



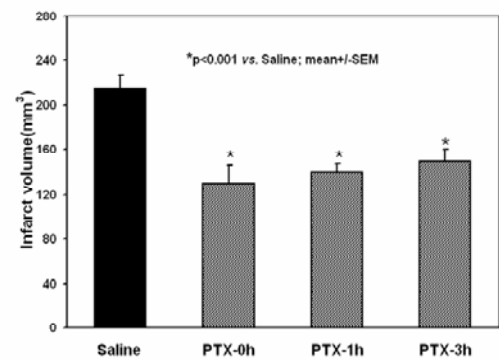
Brain matrix

[]



(L-NAME)

(7-NI)



(PTX-0h)

(PTX-3h)

(PTX-1h)

[]

()

... NIH image analyzer

() Brain matrix

[]



[]

: Flexion

:

(Righting reflex)

[]

[]

[1] Taylor TN, Davis PH, Torner JC, Holmes J, Meyer JW, Jacobson MF. Lifetime cost of stroke in the United States. Stroke, 1996; 27:1459-66.

- [25] Wang CX, Yang T, Shuaib A. An improved version of embolic model of brain ischemic injury in the rat. *J Neurosci Meth*, 2001; 30:147-51.
- [26] Vise WM, Schuier FJ, Hossmann K-A, Takagi S, Zulch KJ. Cerebral microembolization. I. Pathophysiological studies. *Arch Neurol*, 1977; 34:660-5.
- [27] Sereghy T, Overgaard K, Boysen G. Neuroprotection by excitatory amino acid antagonist augments the benefit of thrombolysis in embolic stroke in rats. *Stroke*, 1993; 24:1702-8.
- [28] Zhang Z, Zhang RL, Jiang Q, Raman SBK, Cantwell L. A new rat model of thrombotic focal cerebral ischemia. *JCBFM*, 1997; 17:123-35.
- [29] Koizumi J, Yoshida Y, Nakazawa T, Ooneda G. Experimental studies of ischemic brain edema, I: a new experimental model of cerebral embolism in rats in which recirculation can be introduced in the ischemic area. *Jpn J Stroke*, 1986; 8:1-8.
- [30] Longa EZ, Weinstein PR, Carlson S, Cummins R. Reversible middle cerebral artery occlusion without craniotomy in rats. *Stroke*, 1989; 20:84-91.
- [31] Belayev L, Alonso OF, Busto R, Zhao W, Ginsberg MD. Middle cerebral artery occlusion in the rat by intraluminal suture. Neurological and pathological evaluation of an improved model. *Stroke*, 1996; 27(9):1616-22.
- [32] Vakili A, Kataoka H, Plesnila N. Role of arginine vasopressin V1 and V2 receptors for brain damage after transient focal cerebral ischemia. *J Cerebral Blood Flow Metab*, 2005; 25:1012-9.
- [33] Vakili A, Zahedi Khorasani M. Post-ischemic treatment of pentoxifyline reduces cortical not striatal infarct volume in transient model of focal cerebral ischemia in rat. *Brain Res*, 2007; 1144:186-91.
- [34] Plesnila N, Zhu C, Culmsee C, Groger M, Moskowitz MA, Blomgren K. Nuclear translocation of apoptosis-inducing factor after focal cerebral ischemia. *J Cereb Blood Flow Metab*, 2004; 24:458-66.
- [35] Samdani AF, Dawson TM, Dawson VL. Nitric oxide synthase in models of focal ischemia. *Stroke*, 1997; 28:1283-8.
- [36] Cockroft KM, Meistrell M, Zimmerman GA, Risucci D, Bloom O, Cerami A, et al. Cerebroprotective effects of aminoguanidine in a rodent model of stroke. *Stroke*, 1996; 27:1393-8.
- [37] Vakili A, Nekoeian AA, Dehghani GA. Aminoguanidine reduces infarct volume and improve neurological dysfunction in rat model focal cerebral ischemia. *Daru*, 2006; 14:31-6.
- [38] Wexler EJ, Peters EE, Gonzales A, Gonzales ML, Slee AM, et al. An objective procedure for ischemic area evaluation of the stroke intraluminal thread model in the mouse and rat. *J Neurosci Methods*, 2002; 113:51-8.
- [39] Vakili A, Nekoeian AA, Dehghani GA. L-NAME and 7-Nitroimidazole reduces brain injury in rat model of transient focal cerebral ischemia. *Iran J Med Sci*, 2004; 29(3):109-14.
- [40] Smraka M, Otevrel F, Kuchtiaková S, Hork M, Jurán V, Duba M, et al. Experimental model of reversible focal ischemia in the rat. *Scripta Medica (Brono)*, 2001; 74(6):391-8.
- [41] Bederson JB, Pitts LH, Tsuji M, Nishimura MC, Davis RL, et al. Rat middle cerebral artery occlusion: evaluation of the model and development of a neurologic examination. *Stroke*, 1986; 17: 472-6.
- [42] Lippold HJ. Quantitative succinic dehydrogenases histochemistry. A comparison of different tetrazolium salts. *Histochemistry*, 1982; 76:381-405.
- [43] Liszczak TM, Hedley-Whyte ET, Adams JF, Han DH, Kolluri VS, Vacanti FX, et al. Limitations of tetrazolium salts in delineating infarcted brain. *Acta Neuropathol (Berl)*, 1984; 65(2):150-7.
- [44] Lundy EF, Solik BS, Frank RS, Lacy PS, Combs DJ, Zelenock GB, et al. Morphometric evaluation of brain infarcts in rats and gerbils. *J Pharmacol Methods*, 1986; 16(3):201-14.
- [45] Hatfield RH, Mendelow AD, Pery RH, Alvarez LM, Modha P. Triphenyltetrazolium chloride (TTC) as a marker for ischaemic changes in rat brain following permanent middle cerebral artery occlusion. *Neuropathol Appl Neurobiol*, 1991; 17:61-7.
- [46] Benedek A, Moricz K, Juranyi Z, Gigler G, Levay G, Harsing LG Jr, et al. Use of TTC staining for the evaluation of tissue injury in the early phases of reperfusion after focal cerebral ischemia in rats. *Brain Res*, 2006; 1116:159-65.
- [2] Wolf PA, Kannel WB, D'Agostino RB. Epidemiology of Stroke. In: Ginsberg MD, Bogousslavsky J. (Eds). *Cerebrovascular disease: pathophysiology, diagnosis, and management*. ...th ed. Malden, Mass: Blackwell Science, 1998. p. 834-49.
- [3] The National Institute of Neurological Disorders and Stroke rt-PA Stroke Study Group. Tissue plasminogen activator for acute ischemic stroke. *N Engl J Med*, 1995; 333:1581-7.
- [4] De Keyser J, Sulter G, Luiten PG. Clinical trials with neuroprotective drugs in acute ischaemic stroke: are we doing the right thing? *Trends Neurosci*, 1999; 22:535-40.
- [5] Nagahiro S, Uno M, Sato K, Goto S, Morioka M, Ushio Y. Pathophysiology and treatment of cerebral ischemia. *J Med Invest*, 1998; 45:57-70.
- [6] Alonso de Leciana M, Dez-Tejedor E, Carceller F, Roda JM. Cerebral ischemia: from animal studies to clinical practice. *Cerebrovasc Dis*, 2001; 11:20-30.
- [7] Hossmann KA. Experimental models for the investigation of brain ischemia. *Cardiovascular Research*, 1998; 39:106-20.
- [8] Tajima G, Shiozaki T, Seiyama A, Mohri T, Kajino K, Nakae H, et al. Mismatch recovery of regional cerebral blood flow and brain temperature during reperfusion after prolonged brain ischemia in gerbils. *J Trauma*, 2007; 62:36-43.
- [9] Kawai K, Nitecka L, Ruetzler CA, Nagashima G, Joo F, Mies G, et al. Global cerebral ischemia associated with cardiac arrest in the rat: I. Dynamics of early neuronal changes. *J Cereb Blood Flow Metab*, 1992; 12(2):238-49.
- [10] Chandler MJ, DeLeo J, Carney JM. An unanesthetized-gerbil model damage of cerebral ischemia-induced behavioral changes. *J Pharmacol Methods*, 1985; 14:137-46.
- [11] Janac B, Radenovic L, Selakovic V, Prolic Z. Time course of motor behavior changes in Mongolian gerbils submitted to different durations of cerebral ischemia. *Behav Brain Res*, 2006; 175: 362-73.
- [12] Li DQ, Bao YM, Li Y, Wang CF, Liu Y, An LJ. Catalpol modulates the expressions of Bcl-2 and Bax and attenuates apoptosis in gerbils after ischemic injury. *Brain Res*, 2006; 1115: 179-85.
- [13] Lestage P, Lockhart B, Roger A. In vivo exploration of cerebral ischemia: use of neuroprotective agents in animal studies. *Therapie*, 2002; 57:554-63.
- [14] Gupta YK, Briyal S. Animal models of cerebral ischemia for evaluation of drugs. *Indian J Physiol Pharmacol*, 2004; 48:379-94.
- [15] Dai X, Chen L, Sokabe M. Neurosteroid estradiol rescues ischemia-induced deficit in the long-term potentiation of rat hippocampal CA1 neurons. *Neuropharmacology*, 2007; 52:1124-38.
- [16] Zheng YQ, Liu JX, Wang JN, Xu L. Effects of crocin on reperfusion-induced oxidative/nitrative injury to cerebral microvessels after global cerebral ischemia. *Brain Res*, 2007; 1138:86-94.
- [17] Dirnagl U, Iadecola C, Moskowitz MA. Pathobiology of ischaemic stroke: an integrated view. *Trends Neurosci*, 1999; 22(9):391-7.
- [18] Tamura A, Graham DI, McCulloch J, Teasdale GM. Focal cerebral ischaemia in the rat: 1. Description of technique and early neuropathological consequences following middle cerebral artery occlusion. *J Cereb Blood Flow Metab*, 1981; 1(1):53-60.
- [19] Little JR. Implanted device for middle cerebral artery occlusion in conscious cats. *Stroke*, 1977; 8:258-60.
- [20] Hayakawa T, Waltz AG. Immediate effects of cerebral ischemia: evolution and resolution of neurological deficits after experimental occlusion of one middle cerebral artery in conscious cats. *Stroke*, 1975; 6:321-7.
- [21] Watson BD, Dietrich WD, Busto R, Wachtel MS, Ginsberg MD. Induction of reproducible brain infarction by photochemically initiated thrombosis. *Ann Neurol*, 1985; 17:497-504.
- [22] Yan YP, Yin KJ, Sun FY. Effect of glutamate transporter on neuronal damage induced by photochemical thrombotic brain ischemia. *Neuroreport*, 1998; 16:441-6.
- [23] Futrell N, Millikan C, Watson BD, Dietrich WD, Ginsberg MD. Embolic stroke from a carotid arterial source in the rat: pathology and clinical implications. *Neurology*, 1989; 39:1050-6.
- [24] Pazos AJ, Orezza SL, McCabe PM, Dietrich WD, Green EJ. Recovery of vibrissae-dependent behavioral responses following barrelfield damage is not dependent upon the remaining somatosensory cortical tissue. *Brain Res*, 1995; 689:224-32.

[48] Plesnila N, Zinkel S, Le DA, Amin-Hanjani S, Wu Y, Qiu J, et al. BID mediates neuronal cell death after oxygen/ glucose deprivation and focal cerebral ischemia. Proc Natl Acad Sci U S A, 2001; 98:15318-23.

[47] Tureyen K, Vemuganti R, Sailor KA, Dempsey RJ. Infarct volume quantification in mouse focal cerebral ischemia: a comparison of triphenyltetrazolium chloride and cresyl violet staining techniques. J Neurosci Methods, 2004; 139:203-7.

Archive of SID