

()

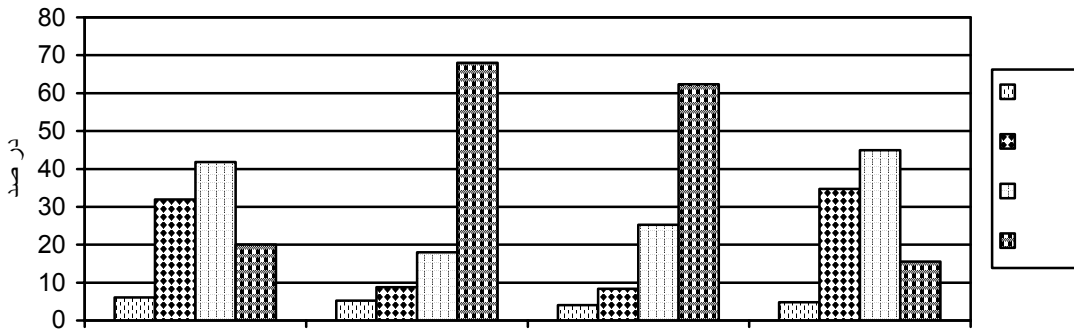
Archive of SID

%

(% /)
± /)
(% /)
(%)
(%)
(%)
/ ± /
/ ± /
/ ± /

Archive of SID

:1



Archive

%
%

(P<0.05)

(P<0.05)

(P<0.05)

(P<0.05)

%

%

%

(P<0.05)

%

()

($P < .05$)

Psychosocial

()

Archive of SID

()

()

()

()

()

()

() HIV

()

()

()

Abstinence

()

Abstinence

()

()

(Reason Action Theory)
(Social Learning theory)

()

References :

1. Coen A. Young people reproductive health needs neglected, Fact Sheets, Populat Act Int 2002; 19:1.

4. Wight D, Abraham C, Scott S. Towards a psycho-social theoretical framework for sexual health promotion. Health Educ Res 1998; 13: 317-30.

5. Elder JP, Ayala GX, Harris S. Theories and intervention approaches to health behavior change in primary care. Am J Prev Med 1999; 17: 275-84.

6. Bowes J. Review prepared for the National Network of Libraries of Medicine, Pacific Northwest Region, Seattle, December 1997.

www.comminit.com. The communication initiative, 5148 Polson Trace, Victoria, British Columbia, Canada V8Y 2C4, 2003, 47-54.

7. Rosenstock IM. The health belief model: explaining through experiences. In: Glanz K, Lewis FM. Health behavior and health education: theory and practice. San Francisco: Jossey-Bass Publishers, 1990, 39-62.

8. Gielen AC, Faden RR, O'Campo P, et al. Women's perspectives about sexual behavior: a test of the health belief model. AIDS Educ Prev 1994; 6: 1-11.

9. Davis RD, Duncan L, Turner LW, et al. Perception of human immunodeficiency virus and sexually transmitted diseases risk among low income adults: a pilot study. Appl Nurse Res 2001; 14: 105-9.

10. Manning DT, Barenberg N, Gallese L, et al. College students' knowledge and health beliefs

about AIDS: Implications for educational prevention. *J Am College Health* 1989; 37: 254-9.

11. Abraham C, Sheeran P, Orbell S. Can social cognitive models contribute to the effectiveness to HIV prevention behavioral interventions? A brief review of literature. *Br J Med Psychol* 1998; 71: 297-310.

12. Wight D, Abraham C. From psych-social theory to sustained classroom practice: developing a research based teacher-derived sex education program. *Health Educ Res* 2000;15: 25-38.

13. Kirby D. No easy answers research findings on programs to reduce teen pregnancy. Washington Dc: National campaign to prevent teen pregnancy (1997). Cited in: The Facts, Advocacy for youth, The Anniversary Conference, 2001 Dec 2-4, Washington Dc, USA.

14. Watt LD. Pregnancy prevention in primary care for adolescent males. *J Pediatr Health Care* 2001; 15: 223-8.

15. Roye CF, Handson M. Developing a culturally video to promote dual method use by urban teens; rational and methodology. *AIDS Educ Prev* 2003; 15: 148-50.

16. Thomas LW. A Critical feminist perspective of health belief model: implication nursing theory, research, practice and education. *J Prof Nurs* 1995; 11: 246-52.

17. Eizen M, Zellman GL, McAlister AC. Evaluating the impact of theory based sexuality and contraception education program. *Fam Plan Perspect* 1990; 22: 621-71.

18. Herold ES. The health belief model: can it help us to understand contraceptive use among adolescents? *J Sch Health* 1983 53: 19-21.

19. Eizen M, Zellman GL, McAlister A. A health belief model approach to adolescents' fertility control, some pilot program finding. *Health Educ* 1985; 12: 185-210.

20. Camel S. The health belief model in the research of AIDS related preventive behaviors. *Public Health Rev* 1990-91; 18: 73-85.

21. Keith JB, McCreary C, Collins K, et al. Sexual activity and contraceptive use among low-income urban black adolescent females. *Adolescence* 1991; 26: 769-85.

22. Eisen M, Zellman GL, McAlister AL. A health belief model-social learning theory approach to adolescents' fertility control: findings from a controlled field trial. *Health Educ* 1992; 19: 249-62.

23. Abraham C, Sheeran P, Spears R, et al. Health beliefs and promotion of HIV-preventive intentions among teenagers: a scottish perspective. *Health Psychol* 1992; 11: 363-70.

24. Hitabiddle SJ. Adolescent condom use, the health belief model, and the prevention of sexually transmitted disease. *J Obstet Gynecol Neonatal Nurs* 1996; 25: 61-6.

25. Mulvihill CK. AIDS education for college students, review and proposal for a reason-based curriculum. *AIDS Educ Prev* 1996; 8: 11-25.

26. Montgomery KS. Health promotion with adolescents: examining theoretical perspectives to guide research. *Res Theory Nurs Pract* 2002; 16:119-34.

27. Stout AE. Prenatal care for low-income women and health belief model: a new beginning. *J Community Health Nurs* 1997; 14: 169-80.

28. Ashing Giwa K. Health behavior change models and their socio-cultural relevance for breast cancer screening in African American women. *Women Health* 1999; 28: 53-71.

29. Austin LT, Ahmad F, McNally MJ, et al. Breast and cervical cancer screening in Hispanic women: a literature review using the health belief model. *Women Health Iss* 2002; 12: 122-8.

30. Sear AM, Turner MN. Factors associated with short-term oral contraceptive discontinuation. *Fam Plann Perspect* 1974; 6: 230-3.

31. Rural center for AIDS/STD prevention, Behavior change models for reducing HIV/STD risk, Fact sheets No 3, 1995. URL: <http://www.indiana.edu/~aids>

:()

33. Weed SE, Olsen JA. Policy and program considerations for teenage pregnancy prevention: a summary for policy makers. *Int Rev* 1989; 13: 267-93.

:()

35. Aarons SJ, Jenkins RR, Raine TR, et al. Postponing sexual intercourse among junior high school students a randomized controlled evaluation. *J Adolesc Health* 2000; 27: 236-47.

36. Thatot S, Charron-Prochownik D, Dorn LD, et al. Predictors of condom use among adolescent Thai vocational students. *J Nurs Scholarsh* 2003; 35: 157-63.

37. Mc Bride DC, Weatheby ML, Inciadig J A, et al. AIDS susceptibility in a migrant population: perception and behavior, Subs use misuse. 1999; 34: 633-52.

38. Lollis CM, Johnson EH, Antoni MH. The efficacy of the health belief model for predicting condom usage and risky sexual practices in university students. *AIDS Educ Prev* 1997; 9: 551-63.
39. Hill Tabiddle SJ. Adolescents condom use, the health belief model, and the prevention of sexually transmitted diseases. *J Obstet Gynecol Neonatal Nurs* 1996; 25: 61-6.
40. Mahoney CA, Thombs DL, Ford OJ. Health belief and self efficacy models, their utility in explaining college students condom use. *AIDS Educ Prev* 1995; 7: 32-47.
41. Wong ML. Behavioral interventions in the control of immunodeficiency virus and other sexually transmitted diseases- A review. *Ann Acad Med Singapore* 1995; 24: 602-7.
42. D'Souza CM, Shrier LA. Prevention and intervention of sexually transmitted diseases in adolescents. *Curr Opin Pediatr* 1999; 11: 287-91.
43. Ritchi LM, Stewart-Kruger J. AIDS risk among street children and youth implication for interventions. *AFR J Psychol* 1995; 25: 31-8.
44. Abraham C, Sheeran P. In search of psychology of safer sex promotion: beyond beliefs and texts. *Health Educ Res* 1993; 8: 245-54.
45. Wilson D, Lauella S, Green Span R, et al. Psychological predictors of HIV preventive behavior among Zimbabwean students. *J Soc Psychol* 1991; 131 : 293-5.
46. Mantomdy SB, Joseph JG, Backer MH, et al. The health belief model in understanding compliance with preventive recommendations for AIDS how useful? *AIDS Educ Prev* 1989; 1: 303-23.
47. Yep GA. HIV prevention among Asian American college students, does the health belief model work? *J Am College Health* 1993; 41:199-205.
48. PanAmerican Health Organization, World Health Organization. World Association for Sexology. Promotion of Sexual health, In Antigua Guatemala, Guatemala, May, 19-20, 2000, Officially Published in 2001.

Archive of SID