

()

Archive of SID

*

XVIII XVII XVI

XIV II

() (Robinson)

(Schistosomiasis)

x

()

(Dithiothritol)

(Amino coproic

EDTA
acid)

(Freezing and thawing)

(.)

(.)

(Sargeaunt)

PAGE

(HK (GPI E.C. 5 3 1 9)

(Discontinious Poly Acrylamaide
Gel Electrophoresis)

(ME E.C 1 1 1 40) E.C 2 7 1 1)

(PGM E.C 2 7 5 1)

Bio rad (Cat.No.#165-3301)

Separating

(Stucking)

Stucking

(.)

)

α

β

(

(.)

+

/

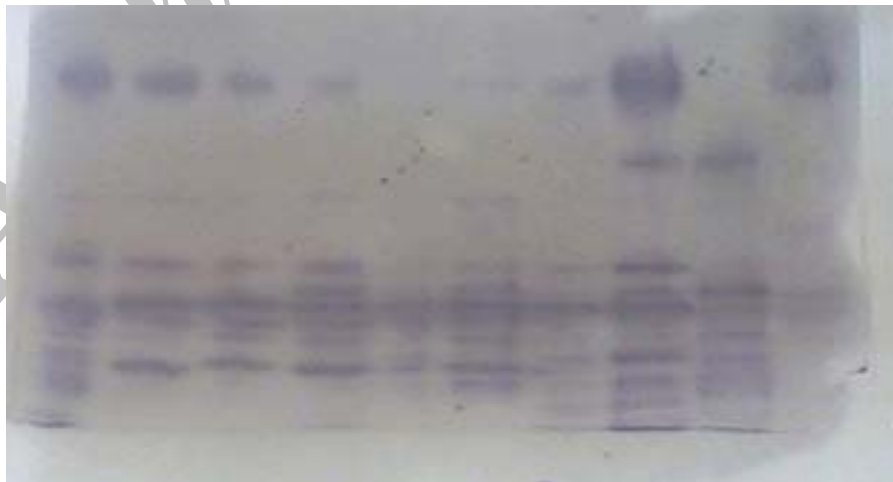
(MTT)

(PMS)

()

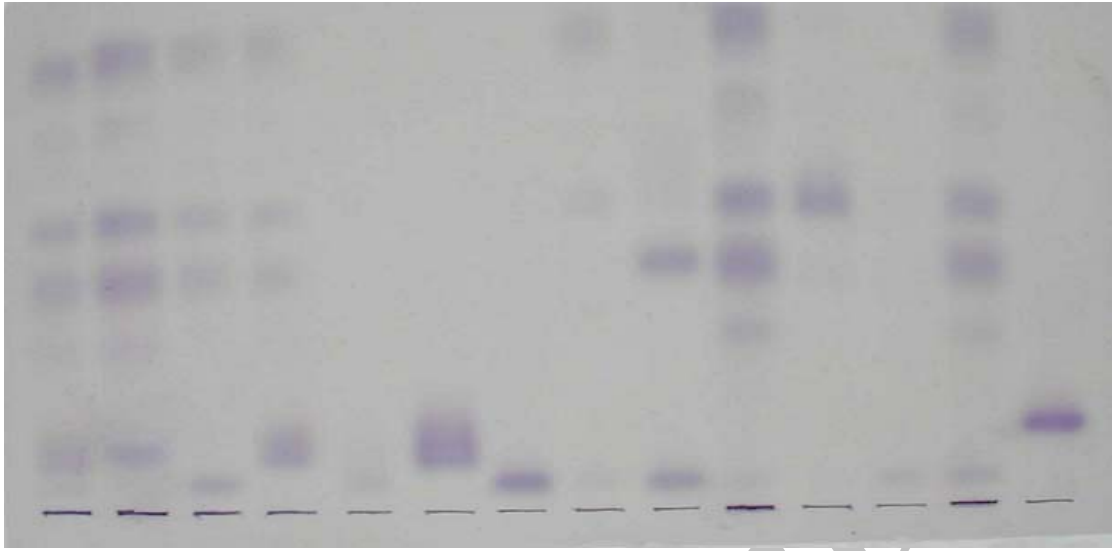
()

23 19 18 17 Bac. 16 13 12 11 10



(GPI)

Bac. = Bacterial sample.



1 2 3 11 5 S.h S.d 8 9 10 12 13 14 E.ch.

(PGM)

S.h = Standard of *Entamoeba histolytica*
 S.d = Standard of *Entamoeba dispar*
 E.ch. = *Entamoeba chatton*

M	-			-	-	-	-			-	-	
H	-		-	-	-	-	-	-	-	-	-	-
K			-	-	-	-	-	-	-	-	-	-
P	-	-									-	
G										-		
P			-		-	-					-	
I	-	-	-	-	-	-	-	-	-	-	-	-
Z	II	II	XVII	II	XVII	XVII	I	I	I	XVIII	XIV	XVI
N	1	2	3	4	5	6	7	8	9	10	11	12

M	-	-	-	-	-	-	-	-	-	-	-	-
H			-	-		-	-	-	-	-		-
K			-	-		-	-	-	-	-		-
P												
G												
P												
I	-	-	-	-	-	-	-	-	-	-	-	-
Z	I	XVI	I	*	*	XVII	XVII	II	XVII	II	XVII	
N	13	14	15	16	17	18	19	20	21	22	23	

HK PGM =*

(XIV)

(II)

(XVIII) (XVII) (XVI) (I)

(.)

GPI

RM= /

RM= /

RM = / /

PGM

GPI

HK

PGM

()

(Hrs-S)

HK

PGM

()

GPI

(% /) (I)

(%) (XVII)

(%) (XVI)

(%) (XVIII)

(HM- :

(AS-16)

1) (Z=19),(Z=14)

Keio

(%) (II)

XIV

()

.()

.()

References :

1. Gonzalez-Ruiz A, Haque R, Rhman T, et al.. Diagnosis of amebic dysentery by detection of Entamoeba histolytica fecal antigen by an invasive strain specific monoclonal antibody –based enzyme linked immunosorbent assay. J Clin Microbiol 1994;32: 964-970.
2. Bhattacharya A, Satish S, Baghi A, et al.The genome of Entamoeba histolytica. Inter J Parasitol 2000; 30:401-410.
3. World Health Organization. Amoebiasis.W.H.O Weekly Epidemiol Rec 1997 ;72 :97-100.
4. Bavej UK, Francis S, Kaura M, et al. The Zymodemes of Entamoeba histolytica in New Delhi, India. J Diarrhoeal Dis 1990 ;8:27-30.
5. Sargeant PG. Zymodemes expressing possible genetic exchange in Entamoeba histolytica. Trans R Soc Trop Med Hyg 1985; 79:86-9.
6. Sargeant PG,Williams JE, Grene JD. The differentiation of invasive and noninvasive Entamoeba histolytica by isoenzyme electrophoresis.Trans Royal Soc Trop Med Hyg 1978 ;72:437.
7. Robinson GL.The Laboratory diagnosis of human parasitic amoeba. Trans R Soc Trop Med Hyg 1968; 62 : 285- 94.
8. Haque R, Ali IKM, Akther S, et al. Comparison of PCR Isoenzyme analysis and antigen detection for diagnosis of Entamoeba histolytica infection. J Clin Microbiol 1998 ;36:449-52.
9. (HSr+S)
)
10. Gathiram V, Jackson TFHG. A longitudinal study of asymptomatic carriers of pathogenic zymodemes of Entamoeba histolytica. S Afr Med J 1987;72:669-672.