

()

GnRHa/PMSG/HCG

GnRHx (PMSG/HCG)

: _____

(N=30)

()

: _____

) [Pregnant Monoposal Serum Gonadotropine = GnRHx (PMSG/HCG)]

()

(

: _____

(P < /)

: _____

// : - // : - // :

*

(Rat)

.()
 .() %
) ()
 .()
 (Rat)

(Pregnant
 monopsal Serum Gonadotropine= PMSG)

(Human Chorionic Gonadotropine
 =HCG) (Implantation window)

(Assisted Reproductive Techniques= ART)

)
 (
 .()
 :
 .()

(PH= /)

a/b

%/

)

(

Philips

.()

Vv

(Volume fraction = Vv)

Vv

Vv

(RER)

Vv

(Nuclear Channel System=NCS)

.()

axial ratio

d=axb

(Vv)

(

Vv

/ ± /

/ ± /

/ ± /

* / ± /

/ ± /

* / ± /

RER

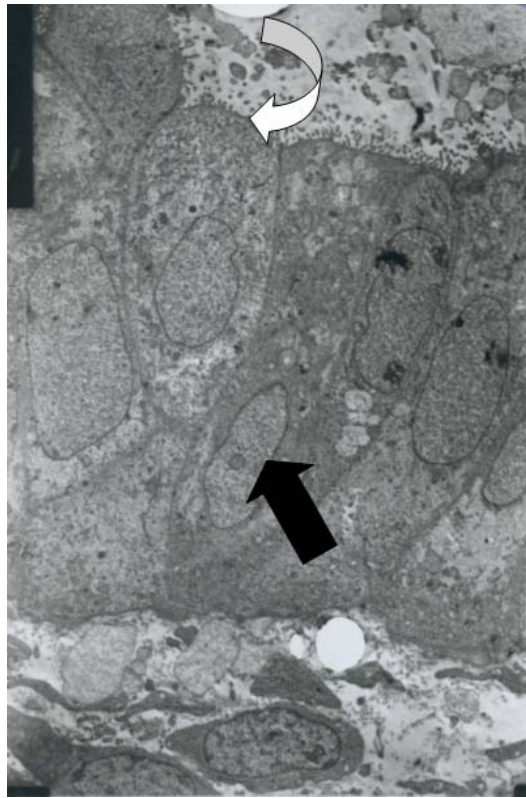
/ ± /

*/ ± /

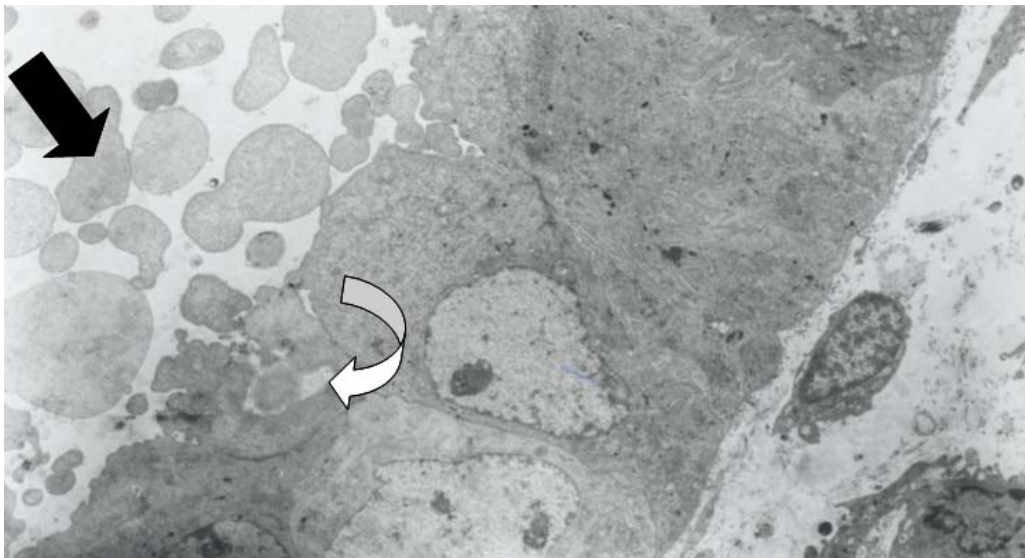
Mean ±SE

*

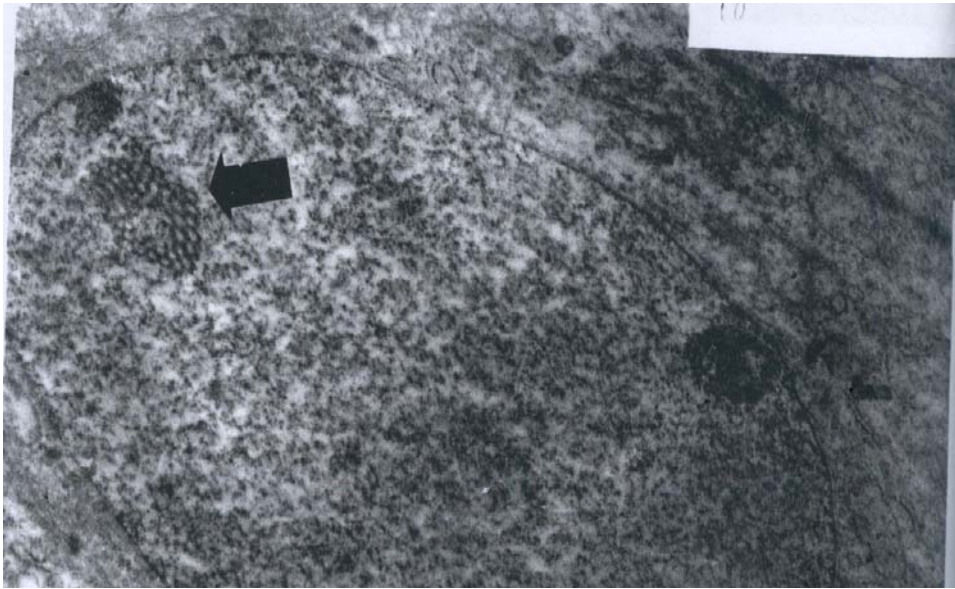
.(P< /)



() () ()
 .(x) ()



() () ()
 .(x)() NCS ()



(x.) () (NCS)

) ()
 .() ()

(Implantation window)

(P < /)

(/ ± /)
 Axial Ratio (/ ± /)
 (/ ± /)

() (P < /)

% ()

()

()

(Nikolettos)

()

IVF

(Garcia)

()

(Tavanitou)

()

(N=)

()

()

Archive of SID

References:

1. Hedegaard M. Life style, work and stress, and pregnancy outcome. *Curr Opin Obstet Gynecol* 1999;11: 553-6.
2. Shilkina IA. Effect of overheating on Spermatogenesis in Mice and The value of heat training in adapting sex cells to The effect of high Temperatures. *Biull Eksp Sio Med* 1976; 82:1489 – 91.
3. Lions FH. Infertility: ethiology, evaluation and treatment. *Drugs Today (Barce)* 2000; 36: 369 – 82.
4. Yates CA, De Kretser DM. Male-factor infertility and in vitro fertilization. *J In Vitro Fert Embryo Transf.* 1987; 4:141-7.
5. Machel M, Sebel MD. Infertility, a comprehensive text. Second ed. Appleton and Stamford press, 1999, 507 – 25.
6. Rice A, Chard T. Cytokines in implantation. *Cytokine Growth Factor Rev* 1998; 9:287-96.
7. Wilcox AJ, Wenberg CR. Time of implantation of the conceptus and loss of pregnancy. *New Eng J Med* 1999; 340: 1796-9.
8. Enders Ac, Schlafke S. Cytological aspects of trophoblast-uterine interaction in early implantation. *Am J Anat* 1969;125: 1 – 29.
9. Ziegler D. Endometrial receptivity for implantation, hormonal control of endometrial receptivity. *Hum Reprod* 1995; 10: 4 – 6.
10. Bergeron C, Cornel C. Effects of teals stradiol on the secretory transformation of human endometrium and plasma gonadotropin. *J Clin Endocrinol Metabol* 1992; 74:322 – 31.
11. Speroff L, Glass R, Kase N. *Clinical Gynecologic Endocrinology and Infertility*, 5th ed , Maryland: Williams & Wilkins, 1994, 804 – 97.
12. Beato M and Klug J. Steroid hormone receptors, an update. *Human Reprod Update* 2000; 3: 225 -36
13. Tavaniotou A, Smitz J, Bourgain C, Devroey P. Ovulation induction disrupts luteal phase function. *Ann N Y Acad Sci* 2001; 943:55-63.
14. Marci R, Senn A, Dessole S, Chanson A, Loumaye E, De Grandi P, Germond M. A low-dose stimulation protocol using highly purified follicle-stimulating hormone can lead to high pregnancy rates in in vitro fertilization patients with polycystic ovaies who are at risk of a high ovarian response to gonadotropins. *Fertil Steril* 2001; 75:1131-5.
15. Nikas G. Endometrial receptivity: changes in cell-surface morphology. *Semin Reprod Med* 2000; 8:229-35.
16. Garcia J, Nikas G, Pellicer A, Simon C. Assessment of uterine receptivity and timing of embryo transfer using the detection of pinopodes. *Human Reprod* 1997; 12:125 – 129.
17. Nikolettos N, Asimakopoulos M, Vakalopoulos I, et al. Endometrial fluid accumulation during controlled ovarian stimulation for ICSI treatment. A report of three cases. *Clin Exp Obstet Gynecol* 2002; 29:290-2.
18. Dockery P, Khalid J, Sarani SA, et al. Changes in basement membrane thickness in the human endometrium during the luteal phase of the menstrual cycle. *Hum Reprod Update* 1998; 4 :486-95.
19. Bergh PA, Navot D. The impact of embryonic development and endometrial maturity on the timing of implantation. *Fertil Streil* 1992; 58: 537 – 42.
20. Sarantis D, Roche A. Displacement of receptivity for nidation in the rat: a scanning electron microscopy study. *Hum Reprod* 1988; 3:251 - 5.
21. Rongieres-Bertrand C, Olivennes F, Righini C, et al. Revival of the natural cycles in in-vitro fertilization with the use of a new gonadotrophin-releasing hormone antagonist (Cetrorelix): a pilot study with minimal stimulation. *Hum Reprod* 1999; 14:683-8.