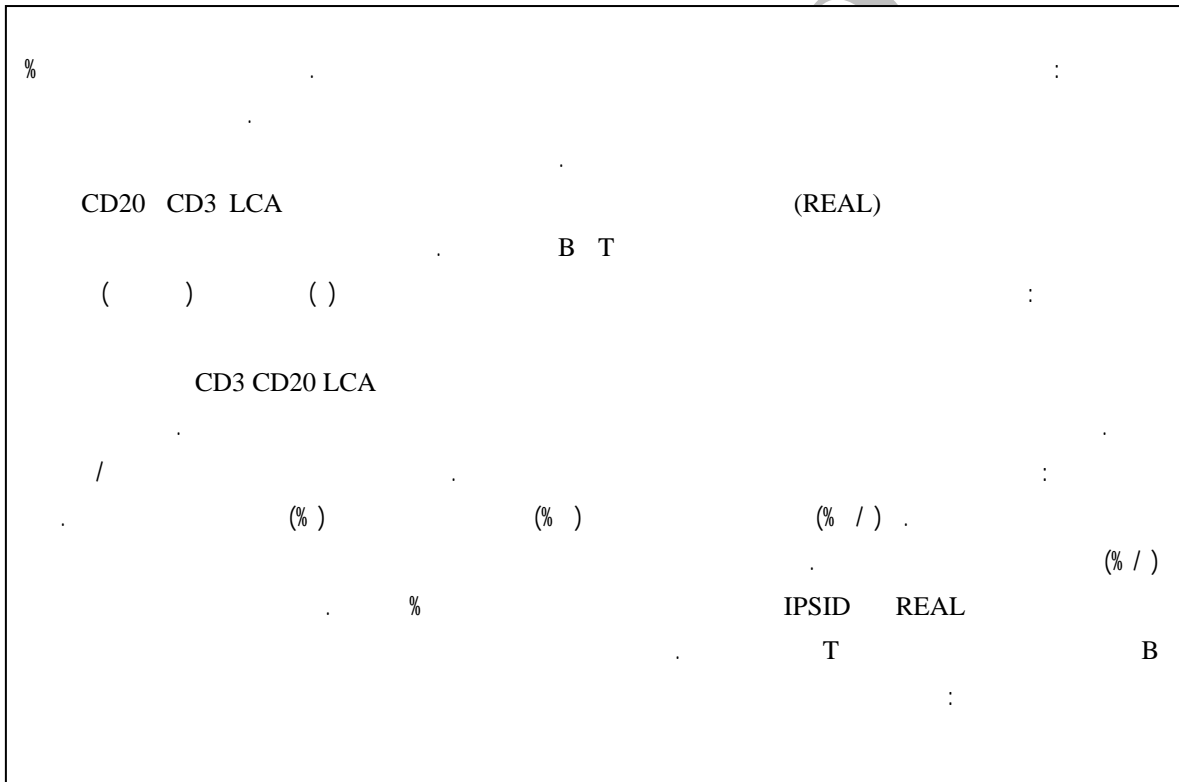




( )

-



%

CD20 CD3 LCA

(REAL)

B T

( ) ( )

CD3 CD20 LCA

/

(%)

(%)

(% / )

(% / )

%

IPSID REAL

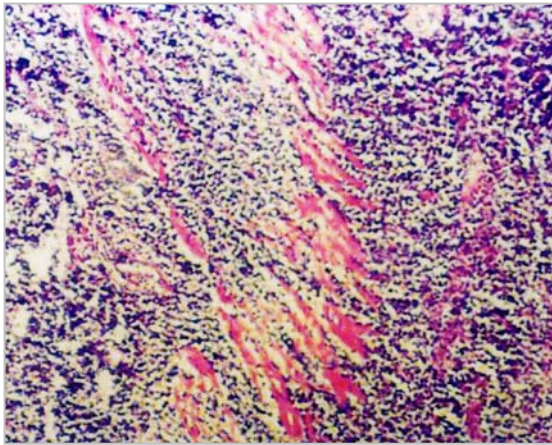
T

B

AI

(.)

%



B

10)

(H&E/10×

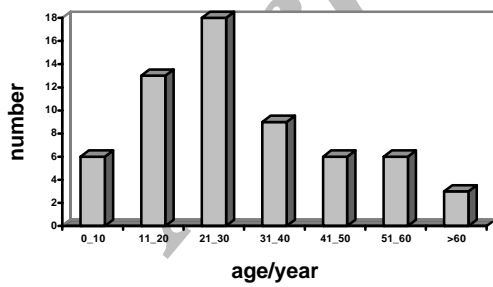
(%)

( )

IPSID

IPSID

( )



( )

REAL

HTLV-1

IPSID

( )

A

A

CD20 (

(T

( )

) LCA

) CD3 (B

)

<sup>2</sup> Immunoproliferative small intestine disease

<sup>1</sup> Revised European-American lymphoma

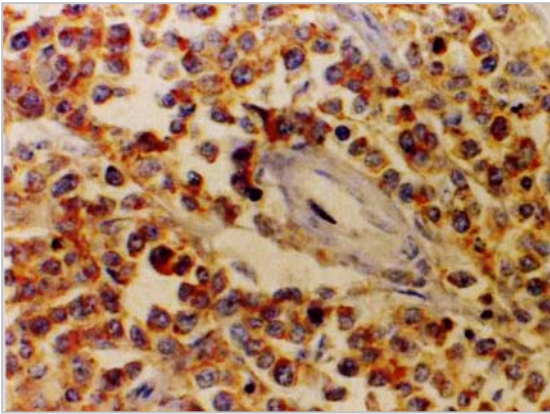
[Empty box]

CD20

(%)

T cell rich B cell lymphoma ( )

CD3



( IHC/10×40) CD<sub>3</sub>

MALT B cell lymphoma ( )

IPSID

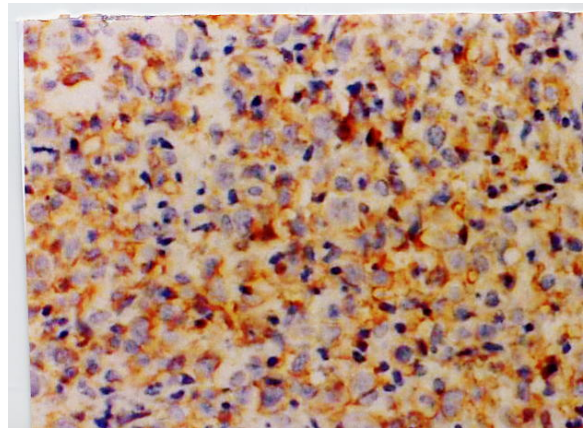
CD20

B

LCA (CD45)

( )

(B



B

(IHC-10×40) CD20

(T ) CD3

						B	IPSID
						B	
/						B	
/						B	
/						B	
						B	
/						T	
/						B	

IPSID /							T&B	

( )

% /

% /

%

(.)

( )

% /

/ "

(% )

( )

IPSID

(.)

(% )

(% )

(% )

(.)

( )

(.)

B

MALT

T

MALT

T

B

( )

(.)

IPSID

/

/

(.)

(.)

B

( )

( )

(.)

IPSID

IPSID

B

%

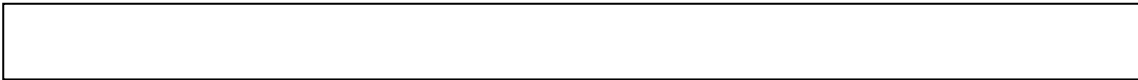
%

%

%

/

(.)



T B

( )

T

( / )

B

\*\*\*\*\*

IPSID

IPSID

B

B

EMA

<sup>3</sup>Epthelial Membrane Ag

Archive of SID

## References:

- 1-d' Amore F., Brinker H., Gronbaek K.: Non-Hodgkin's lymphoma of the gastrointestinal tract. Danish Lymphoma study group. *J Clin Oncol*, 1994 Aug; 12(8): 1673-84.
- 2-Billroth T.: Multiple lymphome. Erfolgreiche behandlung mit arsenik, *Wien Med Wochenschr*, 1871; 21: 1066.
- 3-Koh P.K., Horsman J.M., Radstone C.R.: Localised extranodal non-Hodgkins Lymphoma of the gastrointestinal tract: Sheffield Lymphoma Group experience. *Int J Oncol*, 2001 Apr; 18(4):743-8.
- 4-Pandey M., Kothari K.C., Wadhwa M.K., Patel H.P.: Primary malignant Large bowel lymphoma. *Am Surg*, 2002 Feb; 68(2): 121-6.
- 5-Thomas C.R., Share R.: Gastrointestinal lymphoma. *Med Ped Oncol*, 1991; 19: 48-60.
- 6-Paryani S., Hoppe R.T., Burke J.S., Sneed P., Dawley D., Cox R.S.: Extralymphatic involvement in diffuse nonHodgkin's lymphoma. *J Clin Oncol*, 1983; 1: 682-8.
- 7-Azab M.B., Henry-Amar M., Rougier P., Bognel C., Theodore C., Carde P., et al: Prognostic factors in primary gastrointestinal non-Hodgkin's lymphoma. A multivariate analysis, report of 106 cases, and review of the literature. *Cancer*, 1989; 64: 1208 17.
- 8-Hansen P.B., Vogt K.C., Skov R.L., et al: Primary gastrointestinal non-Hodgkin's lymphoma in adults: a population-based clinical and histopathologic study. : *J Intern Med*. 1998 Jul; 244(1):71-8.
- 9-Cecilia M., Fenoglio-preiser: Gastrointestinal pathology an atlas and text; Second ed, Lippincott - Raven, 1998: 1129-61.
- 10-Otto S., Gary M.: Immunoproliferative small intestinal disease: prolonged 30-year course without development of lymphoma. *The American Journal of Gastroenterology*, Volume 96, Issue 9, September 2001: 2769-2774.
- 11-Chung Ming S.I., Goldman H.: pathology of gastrointestinal tract, Malignant lymphoma of gastrointestinal tract, second ed, Williams and Wilkins company, 1998; 339-57.
- 12-Koch P., Del Valle F., Berdel W.E., et al: Primary gastrointestinal non-hodgkins lymphoma: Anatomic and histologic distribution, clinical features and survival data of 371 patients registered in the German multicenter Study GIT NHL. *J Clin Oncol*, 2001 Sep; 15(18): 3861-73.
- 13-Otter R., Birger R., Kluin Ph.M., Hermans J., Willemze R.: Primary gastrointestinal non-Hodgkin's lymphoma in a population-based registry. *Br J Cancer*, 1989; 60: 745-50.
- 14-d'Amore F., Brincker H., Grønbaek K., Thorling K., Pedersen M., Jensen M.K., et al: Non-Hodgkin's lymphoma of the gastrointestinal tract: A population-based analysis of incidence, geographic distribution, clinicopathologic presentation features, and prognosis. *J Clin Oncol*, 1994; 12: 1673 84.
- 15-Salles G., Herbrecht R., Tilly H., Berger F., Brousse N., Gisselbrecht C., et al: Aggressive primary gastrointestinal lymphomas: review of 91 patients treated with the LNH-84 regimen. A study of the groupe d'etude des lymphomes agressifs. *Am J Med* 1991; 90: 77-3.
- 16-Hansen P.B., Vogt K.C., Skor R.L.: Primary gastro intestinal non-Hodgkin's lymphoma in adults. *J Intern Med*, 1998 Jul; 244(1): 71-8.
- 17-Morton J.E., Leyland M.J., Hudson G.V., Hudson B.V., Anderson L., Bennett M.H., et al: Primary

gastrointestinal non-Hodgkin's lymphoma: a review of 175 British National Lymphoma Investigation cases. Br J Cancer, 1993; 67: 776-82.  
18- Ahn M.J., Park Y.W., Han D., et al:

A case of primary intestinal T-cell lymphoma involving entire gastrointestinal tract. esophagus to rectum, Korean J Intern Med, 2000 Dec; 15(3): 245-9.

Archive of SID