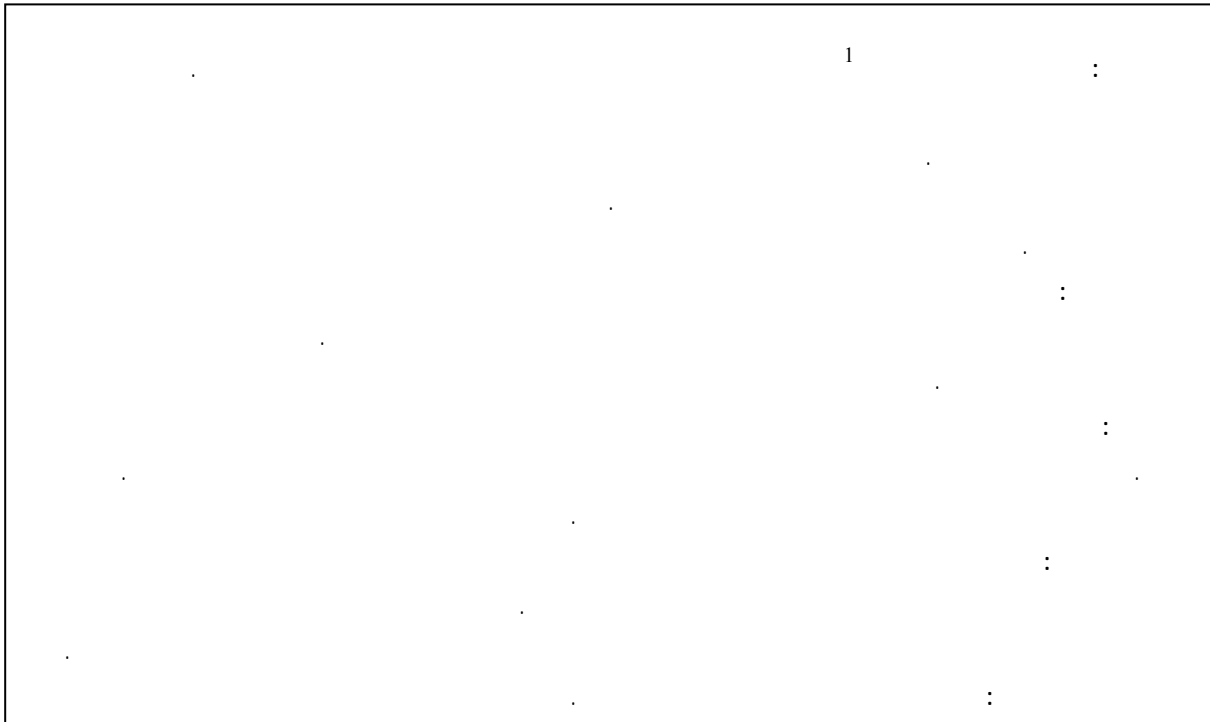




()



Arch

¹ SFEMG: single fiber electromyography

Archive of SID
(.)

4

⁵ Jitter

⁶IPI: Interpotential Interval

² SFEMG: single fiber electro myography

³ stalberg

⁴ Ekstedt



Archive of SID

$$CD = \frac{|IPI_2 - IPI_1| + |IPI_3 - IPI_2| + \dots + |IPI_N - IPI_{N-1}|}{N-1}$$

N-1

N

()

/

EDC

/

/ EDC

/ EDC

() /

MCD -

EDC (% /)

(% /)

MCD	MCD	MCD EDC
		/
	/	/
	/	/

(% /)

(% /)

(% /)

SFEMG -

			SFEMG
	%	% /	%
	%	%	%
	% /	% /	%

%

%

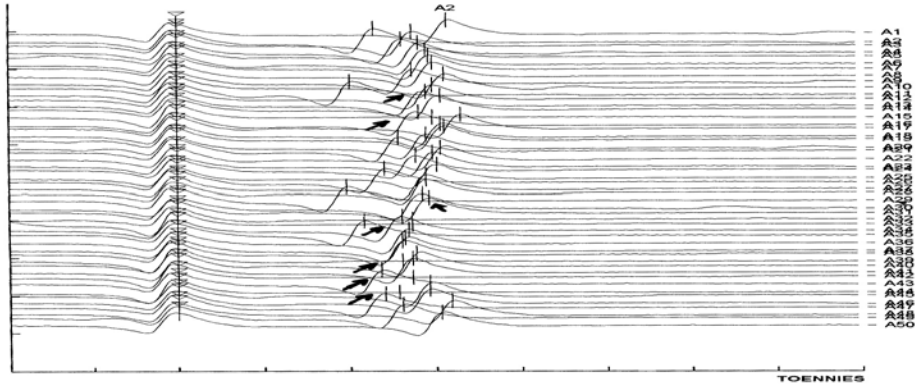
EDC

% /



()

(p= /)



SFEMG -

MCD=

EDC

EDC

(p= /)

% EDC

EDC

(p= /)

EDC

.() .

()

.()

%

%

.()

References:

- 1- Penn A., Rowland L.: Myasthenia Gravis. In: Rowland L., Editor Merritt's Neurology. 10nd ed. Philadelphia Lippincott Williams, 2000; 721-726.
- 2- Stalberg E.: Selective Recording. In: Stalberg E., Trontelj J. Editors. Single Fiber Electromyography Studies in Healthy and Diseased Muscle. 2nd ed. New York, Raven Press, 1994; 416.
- 3- Dumitru D., Amato A.: Neuromuscular Junction Disorders. In: Dumitru D., Amato A., Zwarts M., Editors. Electrodiagnostic Medicine. 2nd ed. Philadelphia: Hanley & Belfus, INC, 2002; 1148-1177.
- 4- Shin Oh.: Single Fiber Electromyography. In: Shin Oh., Editor.

Principle of Clinical Electromyography. 2nd ed. Philadelphia, Lippincott, 1998; 121-131.

5- Victor M., Ropper A.H.: Principles of Neurology. 7th ed. New York, McGraw-Hill, 2000; 1365-1366.

6- Dumitru D., Zwarts M.: Special Nerve Conduction Techniques. In: Dumitru D., Amato A., Zwarts M., and Editors. Electrodiagnostic Medicine. 2nd ed. Philadelphia: Hanley & Belfus, INC, 2002; 326-335.

7- Stalberg E., Single Fiber Electromyographic Findings in Different Disorders. In: Stalberg E., Trontelj J. Editors. Single Fiber Electromyography Studies in Healthy and Diseased Muscle.

2nd ed. New York, Raven press; 1994;
130-155.
8- Aminoff M.: Single Fiber
Electromyography. In: Aminoff M.,

editor. Electromyography in Clinical
Practice. 3rd ed. New York, Churchill
Livingstone, 1998; 153-158.

Archive of SID