



HTLV-1

// : // :

Tax	HTLV-1	HTLV-1	(T /) ATLL
	HTLV1 % /	T CD ⁴⁺	HTLV1
	ATLL		ATLL
() ())	ATLL		:
HTLV1	ATLL		
BMA		T	
	Spss		
()	(: /)		:
(%)	(%)	(% /)	(% /)
(%)	(%)	(%)	(%)
	%	%	%
± /	T		/ ± /
	(p< /)		
	ATLL		:
	T	ATLL	HTLV-1 :

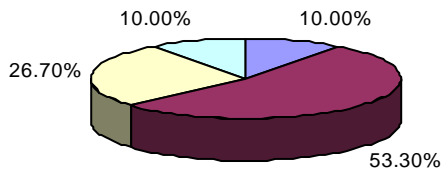
() ()
 ()
 ()

ATLL

/	/	/	/	/	
/	/	/	/	/	
			/	/	
±	±	±	±	±	±

) (CBC)
 (
 HTLV1
 PCR WB
)
 CD8-CD4-CD3-) (CD30-CD25-
 CXR HLADR5
 CT

با سير بطنى حال لنفوما مزمن



ALL

SPSS

ATLL

ATLL

p= /

² Levine



Sig	ATLL
/	
/	
/	()
/	
/	
/	

()

(%)

(%)

(%)

Sig	ATLL
/	
/	
/	
/	
/	
	CNS

(/)

UTI

HTLV1
ATLL

%

%

ATLL

(%)

(/ mg/dl)

(p= / p= /) () % . ATLL

HTLV1 .()

: /
(: / :)

(CD⁺³ T (%)
CD⁺⁴ CD⁺²⁵ CD⁺³⁰)
CD⁻³ (CD⁻⁸ CD⁻⁴)
% CD⁺³

ATLL

CD⁺³⁰ CD⁺³ T) %

()

/ ± / ± /

p< /
LDH

(

ATLL

(%) (%)
(%) (%) (%)
(%) (%) (%)
(%) (%) (%)
()

mm³

≤	<
	-

LDH

-

()

< LDH	≥ LDH
	-

ATLL

WBC

ATLL	HTLV1
CD CD ⁺³⁰) T	LDH:
LDH	HLA- DR ⁺ ⁺²⁵ % (AST-ALT)
T	%
	ATLL
	()
	% ATLL

References:

- 1- Kaplan JE, Khabbaz RF. The epidemiology of Human T lymphotropic virus 2:37-52.
- 2- Uchiyame T, Yodoi J, Sagawa K et al. Adult T cell leukemia. Clinical and hematologic features of 16 cases. Blood 1977; so: 481-92.
- 3- Gessain A. Epidemiology of HTLV-I and associated diseases in Hollsborg p and Hafler DA. Human Tcell Lymphotropic Virus I. 1996:32-51.
- 4- Takatsoki K, Motsuoka M et al. Adult T cell Japan. **J of AIDS and Human Retro.** 1996; 13 suppl: 15-19.
- 5- Hanchard B. Adult T cell leukemia / lymphoma in Jamaica: **J of AIDS and Human Retro.**1996; 13 suppl: 20-25.
- 6- SiDi Y, Meytes D etal. Adult T cell lymphoma in Israeli pateints of Iranian origin. Cancer 1990; 65: 590-593.
- 7- Dourado I, Galvao - Castro B. Human T cell lymphotropic virus in Brazil: current situation in the area with the highest prevalence. **J of AIDS Research and Hum Retrov.** 2001; 17 suppl: 9.
- 8- Taylor G.P Goubau P, Coste J et al. The HTLV European Research Network International Antenatal Seroprevalence Study (HERNIAS). **J of AIDS Research and Hum. Retrov.** 2001; 17 Suppl 1:9.
- 9- Kaplan JE, Khabbaz RF. Murphy EL. Et al. Male -to- female transmission of human T-cell lymphotropic virus type I and II: Association with viral load. The Retrovirus Epidemiology Donor Study Group. **J Acquir Immune Defic Syndr Hum Retrovirol.** 1996; 12: 193-201.
- 10- Tajima K, Inoue M, Takezaki T, Ito M, Ito SI. Ethnoepidemiology of ATL in Japan with sepecial reference to the Mongoloid dispersal. In: Takatsuki K (ed.) Adult T-cell Leukemia, pp. 91-112. Oxford: Oxford University Press, 1994.
- 11- Hermine O, Arnulf B et al. Treatment of adult T-cell leukemia/lymphoma: Clinical results of new therapeutic approach. J of AIDS Research and Hum Retrov. 17 Suppl 1, 2001, S-28.
- 12- Farid R. MD, Fccp , Etemadi, M.M MD, Baradaran, H. MD. Shirdel A., Ahkami N, and Safai S. MD, DSC.Screening sera from the Adult population of Mashhad and Gonbad, for antibadies to HTLV1 – **Medical Journal of the Islamic Republic of IRAN.**1992; 6(2).
- 13- Safai B. Huang J-L, Boeri E, Farid R. Raffat J. Schutzer P. Ahkami R. and Franchini G. Prevalence of HTLV type 1 infection in Iran: a serological and genetic study. AIDS Research and human retroviruses. 1996; 12(12): 1185 – 1190.
- 14- Farid R., Etemadi M., Baradaran H., Nikbin B., Seroepidemiology and virology of HTLV1 in the city of Mashhad northeastern Iran. Serodiagn, Immanother. Infect, Dieases 1993, 251 – 252.