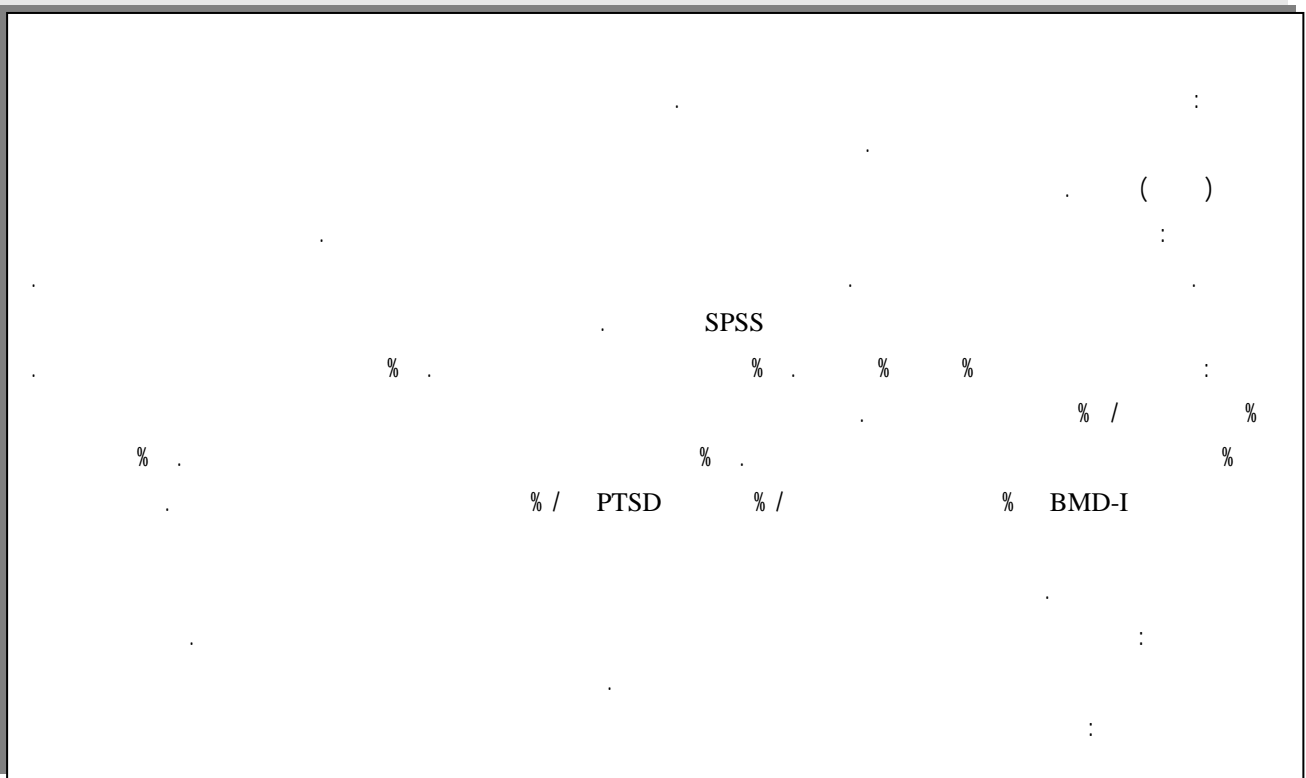




/// : // :



()

DrfayyaziBordbar@gmail.com :



SPSS

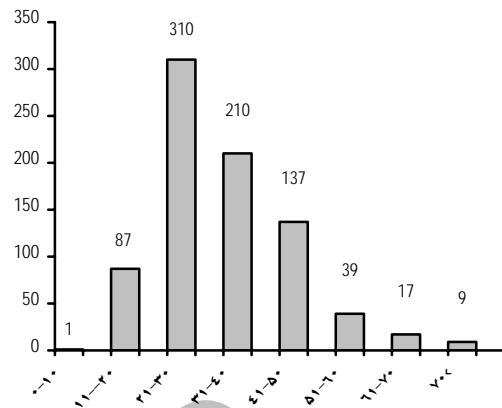
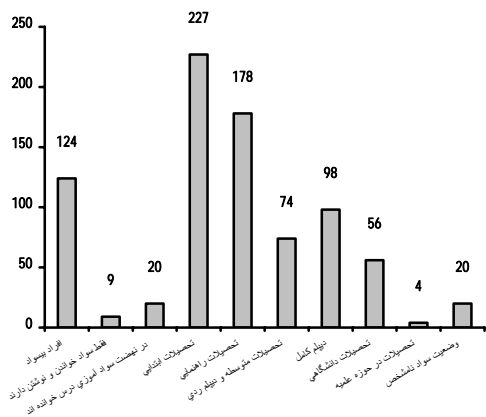
(% /) (% /)
/

(% /) (% /)
(% /) (% /)

(% /)
(% /)

(% /)
(% /)

¹ Excel



(% /)

()

(% /)

(% /)

(% /)

(% /)

(% /)

(% /)

(% /)

(% /)

()

(% /)

(% /)

(% /)

(/)

()

(% /)

(% /)

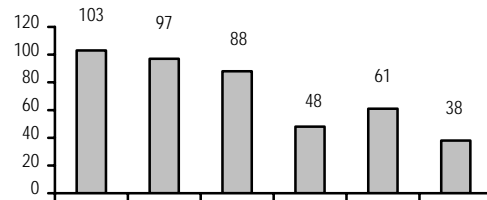
(% /)

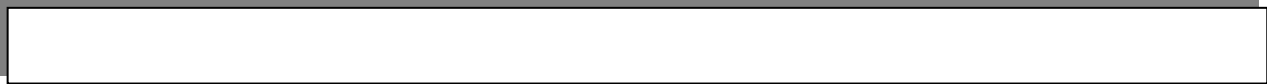
(% /)

()

(% /)

(% /)





(% /)

(% /)

(% /)

/	
/	
/	
/	
/	BMD-I
/	PTSD
/	
/	Depression
/	
/	MR
/	
/	
/	
/	BMD-II
/	(BPD)
/	
/	
/	Epilepsy
/	

(% /)(% /)

(% /)

/
/
/
/
/
/
/
/

Archive of SID

(% /)

()

(% /)

()

()

()

%

(% /)

(% /)

(% /)

(% /)

%

%

%

. ()

(% /)

% /

/

.(% /)

%

%

(% /)

% /

. ()

% /

. () (% /)

%

. ()

%

. ()

% /

. ()

Archive of SID

. ()

% /

. ()

)

(

()

%

References:

- 1- Sadock BJ, Sadock VA. Synopsis of Psychiatry .8th ed;2003.
- 2- Walter Menninger W. Role of Psychiatry Hospital in the Treatment of Mental illness. **In:** Sadock BJ, Sadock VA. Comprehensive textbook of Psychiatry.8th ;2005.
- 3- Crisanti AS, Love EJ. Characteristics of psychiatric inpatient detained under civil commitment legislation: A Canadian Study. **International journal of Law and psychiatry** 2001 ;24:399-410.
- 4- Korkelia JA, Lethinen V, Tuorila, Helenius H. Patterns of psychiatric hospital service use in Finland: A national register study of hospital discharges in the early 1990s. **Soc psychiatry Epidemiology** 1998; 33:218-223.
- 5- Low-Min R, Dyeboode F, Haque MS. First Compulsory admissions under part II of the Mental Health Act 1983: A retrospective five-year study. **Med Sa Law** 2003; 43(3):248-540.
- 6- Manderscheid RW, Sonnenschein MA. Mental Health, United States, 1992. Center of Mental Health Services and National Institute of Mental Health. DHHS pub.1992, No.(SMA) 92-1942. Washington, DC: U.S. Government Printing office.
- 7- Rothbard AB, Kuno E. Success of Deinstitutionalization. **International journal of Law and psychiatry** 2000; 23; No 3-4:329-344.
- 8- Mettoni T, Di Lallo D, Roberti R, et al. Determinants of psychiatric inpatient admission to general hospital psychiatric wards: An epidemiological study in a region of central Italy. **Soc psychiatry. Epidemiology** 1999;34:425-31.
- 9- Friedman S, Feinsilver DL, Davis GW, Margolis R, David OJ, Kesselman M. Decision to admit in an inner-city psychiatric emergency room: beyond diagnosis, the psychosocial factors. **Psychiatr Q** 1981; 53:539-247.
- 10- Johnson JH, Klingler DE, Giannetti RA. A study of mental status and anamnestic factors related to the decision for inpatient or outpatient treatment. **J. Clin Psychol** 1979, 35:844-850.
- 11- Marson DC, McGovern MP, Pomp HC. Psychiatric decision making in the emergency room: a research overview. **Am J Psychiatry** 1988; 145:918-925.
- 12- Mezzich JE, Evanczuk KJ, Mathias RJ, Coffman GA. Admission decisions and multi-axial diagnosis. **Arch Gen Psychiatry** 1984; 41:1001-1004.
- 13- Munizza C, Furlan PM, Di Elia A, Di Onofrio MR, Leggero P, Punzo F, Vidini N, Villari V. Emergency psychiatry: a review of the literature. **Acta Psychiatr Scand Suppl** 1993; 88:1-51.
- 14- Tischler GL. Decision-making processes in the emergency room. **Arch Gen Psychiatry** 1966; 14:69-78.
- 15- Nemirovsky M, Guardo G, Rosenstein M, Agrest M, Tkach J, Montanelli R. Epidemiological features of admitted patients to a psychiatric unit in a Prepaid Medical Organization in Buenos Aires City. **Psychiatr** 2003 Dec-2004 Feb; 14(54): 292-80.
- 16- Bobo WV, Hoge CW, Messina MA, Pavlovic F, Levandowski D, Grieger T. Characteristics of repeat users of inpatient psychiatry service at a large military tertiary care hospital. **Mil med** 2004; 169(8):648-53.
- 17- Brems C, Johnson ME, Wells RS, Burns R, Kletti N. Rates and sequels of coexistence of substance use and other psychiatric disorders. **Int J Circumpolar Health** 2002; 61(3): 224-44.
- 18- Karam EG, Yabroudi PF, Melhem NM. Comorbidity of substance abuse and other psychiatric disorders in acute general psychiatric admissions: a study from Lebanon. **Compr psychiatry** 2002 Nov-Dec; 43(6): 463-8.