



MD

MD

MD

MD

*

MD

MD

// :

// :

SID

(BCC)

BCC

BCC

(x)

H&E

(p= /)

BCC

BCC

()

-

()

*

Email:mhdfarzadnia@yahoo.com

BCC

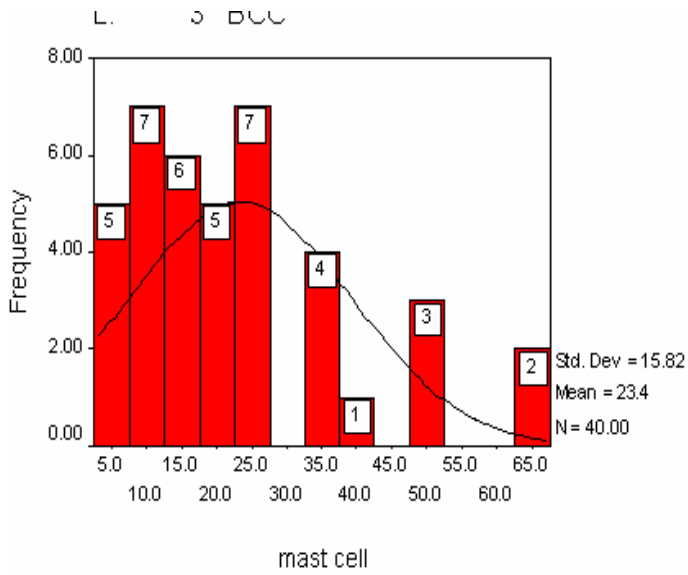
(.)

BCC

(UVB) B

(BCC)

() (p< /) BCC



BCC

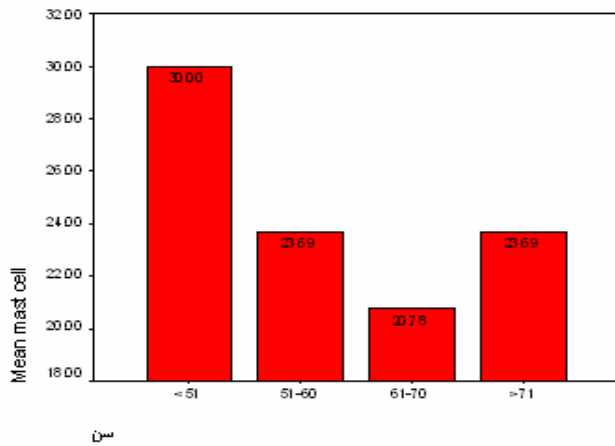
BCC

BCC

mast cell

BCC

(.)



SCC

(X .)

BCC



BCC
SCC

(p> /).

.

BCC

/

(%)

%

BCC

BCC

BCC

BCC

BCC .

							BCC
	/						BCC

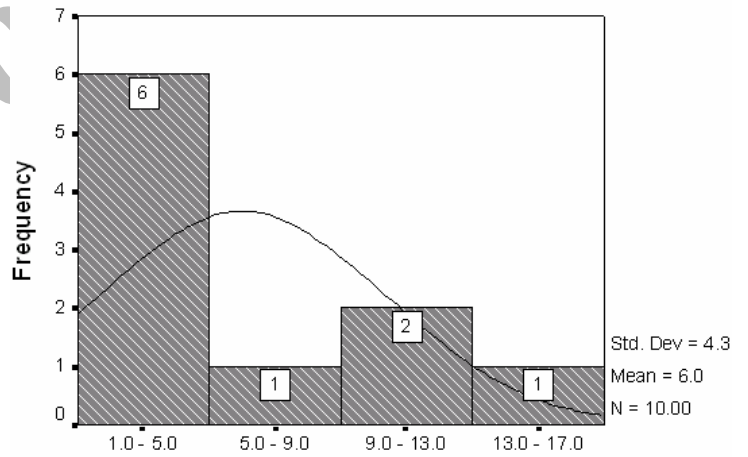
BCC

L. U BCC

(.)

()

(.)



(hpf)

Archive SID

BCC

(.)

E

FC

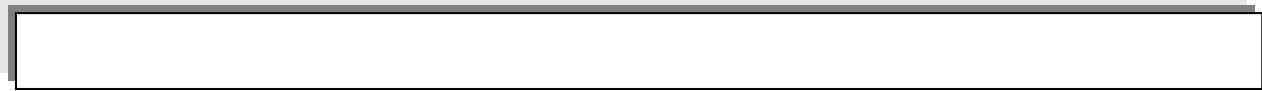
BCC SCC

IL-8 C5a C3a

³ Bazex

¹ Squamous cell carcinoma

² Basal cell carcinoma



$\pm /$ BCC (SCF)
 .() $\pm /$
 BCC UVB
 BCC .() BCC
 BCC BCC
 BCC (p< /)
 SCC BCC :
 SCC BCC :
 .() :
 SCC :
 hpf ()
 hpf
 BCC
 UVB
 C .()
 BCC
 BCC
 () TNF α
 () .(p< /)
 .()
 hpf BCC
 BCC $\pm /$
 BCC / $\pm /$

⁷ yamamoto
⁸ Grimbaldeston

⁴ Ultra violeh basal
⁵ Erkilic
⁶ Deng



(IL 8) VEGF
FGF
BCC IL3 TGF- β
IL4
UVB
(.) IL8 FGF-2
INF α
SCF (STEM CELL
BCC (.) FACTOR)

Archive of SID

References:

- 1- Mckee PH, calonje E, Grante S.R. Tumor of the surface epithelium. Mckee P., Brenn T. skin pathology. **Elsevier** 2005; 1167-1182
- 2- Grimbaldeton MA, Skov L, Finlay – Jones JJ, Hart PH .Increased dermal mast cell prevalence and susceptibility to development of basal cell carcinoma in humans. **Methods** 2002; 28(1): 90-6.
- 3- Erkilic S, Erbagei Z. The significance of mast cells associated with basal cell careinoma .**J dermatol**, 2001; 28(6): 312-5.
- 4- Aoki M, Pawankar R, Niim Y, Kawanas.Mast cells in basal cell carcinoma expresses VEGF, IL8 and RANTES. Department of Dermatology. **Int Arch Allergy Immunol** 2003; 130(3): 216-23.
- 5- Janowski P, Strzelecki M, Brzezinska – Btaszezyk E., zalewska A : computer analysis of normal and basal cell carcinoma mast cells. **Med sci monit** 2001; 7(2): 260-265.
- 6- Weedon D. Cutaneous infiltrates non – lymphoid. Skin pathology. Churchil: living stone; 2002; 1064-1067.
- 7- Erbagci Z,Erkilic S.Can smoking and/or occupational UV exposure have any role in the development of the morphea form basal cell carcinoma? A critical role for peritumoral mast cells.**International society of dermatology** 2002; 41:275-278.
- 8- Grimbaldeton MA, Skov L, Baadsgaard o, Skov BG, Marshman G, Finlay – Jones JJ, Hart PH .high dermal mast cell prevalence is a predisposing factor for basal cell carcinoma in humans. **J invests dermatol** 2000, 115(2): 317-20.
- 9- Hart PH, Grimbaldeton MA, Finlay – Jones JJ. Sunlight, immunosuppression and skin cancer .role of histamine and mast cells. **Clinical and experimental pharmacology and physiology** 2001; 280: 1 -8.
- 10- Chng S, Wallis RA, Yuan L., Davis PF, Tan ST.Mast cell and cutaneous malignancies.**Mod pathol** 2005 :26.
- 11- Yang ML. Basal cell carcinoma and mast cells. **Zhonghua zhong liu za zhi** 1989; 11(6): 404-6.
- 12- Deng JS, Brod BA, Saito R., Tharp MD. Immune associated cells in basal cell carcinoma of skin. **J cutan** 1996; 23(2): 140-60.
- 13- Yamamoto T,Katayama I,Nishioka K.Expression of stem cell factor in basal cell carcinoma. **British journal of dermatology**1997; 137:709-713.
- 14- Grimbaldeton MA, Skov L, Finlay – Jones JJ, Hart PH.squamous cell carcinoma is not associated with high dermal mast cell prevalence in humans. **Journal of ivestigative dermatology** 2002; 119(5): 1204-1208.