

100

100

(1381 82) _ ()

:
*
()
-() -
-()
83/8/13 : _ 83/7/23 :

Abstract :

Objective : To determine the total and gender – specific prevalence of coronary artery disease (CAD) – related risk factors in Cardiology Center of Emam Reza Hospital – Mashhad.

Materials and Methods: A cross – sectional, descriptive study was conducted on 200 patients (100 menopausal women and 100 men) with ischemic heart disease. We consider four CAD – related risk factors (Hypertension, Diabetes mellitus, Hyperlipidemia and Smoking) in assessment of these patients. Data sheets were filled on the basis of the presence or absence of these risk factors. The results were analyzed using SPSS software.

Results : In general, among the factors mentioned above, hypertension is the most common one (40% or 80/200) and after that, hyperlipidemia, smoking and diabetes come in sequence (31, 30, 21%). Compared to men, HTN is more common in menopausal women ($P<0.05$) On the other hand, smoking is more common in men. ($P<0.001$)

Conclusion : According to our study, HTN is the most common risk factor in general. We also consider the role of smoking as the most common risk factor in men and also an important one with the same prevalence to diabetes in women .] So we really need to reinforce smoking cessation.

Key words : Hypertension, Diabetes mellitus, Smoking, Hyperlipidemia, Ischemic heart disease gender menopause

() :
8593038 : 8543031:

Shabastary @mums.AC.Ir :

:

:

20

(5). %80 75

:()

LDL

CAD

65

HDL

2/5 4/5

(7 6).

CAD

4

(1).

CAD

4 1

2/5

()

100)

200

1382

(2).

(100

()

2000

%20

%23

(3).

2

35

CAD

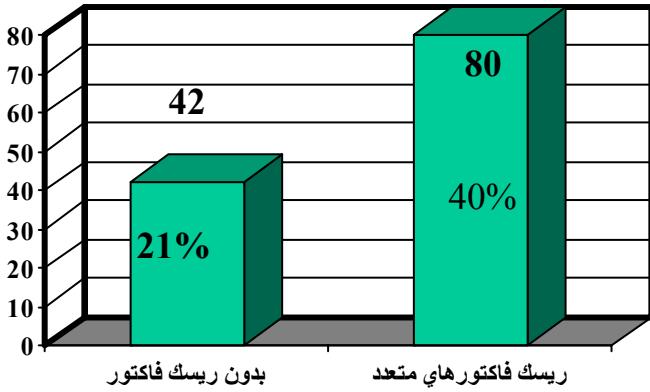
(4).

(42 %21
(80)%40

HTN,HLP,DM)

(

(2).



(1381 82)_()

LDL
126 FBS
240
5
160 LDL
130/85
SPSS

chi-square

(56) HTN

(32)

(22)

(22)

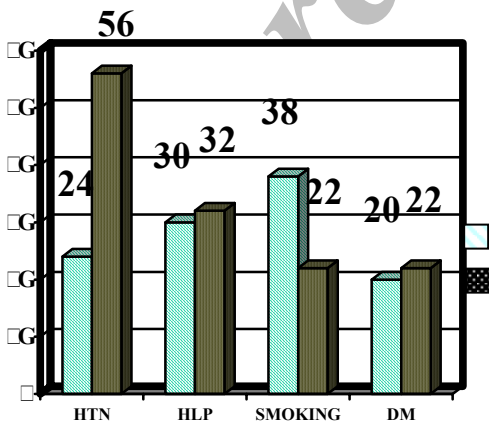
(3

)

(80 %40)

(21 30 31)

(1)

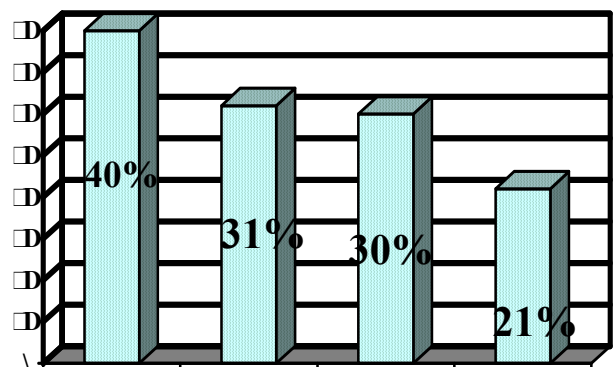


100

3

100

(1381 82)_()



200

1

(1381 82)_()

HTN

38
(30)
(20) (24)
(3)

chi-square

HTN .(p>0.05)

(p<0.05)

4

(p<0.001)

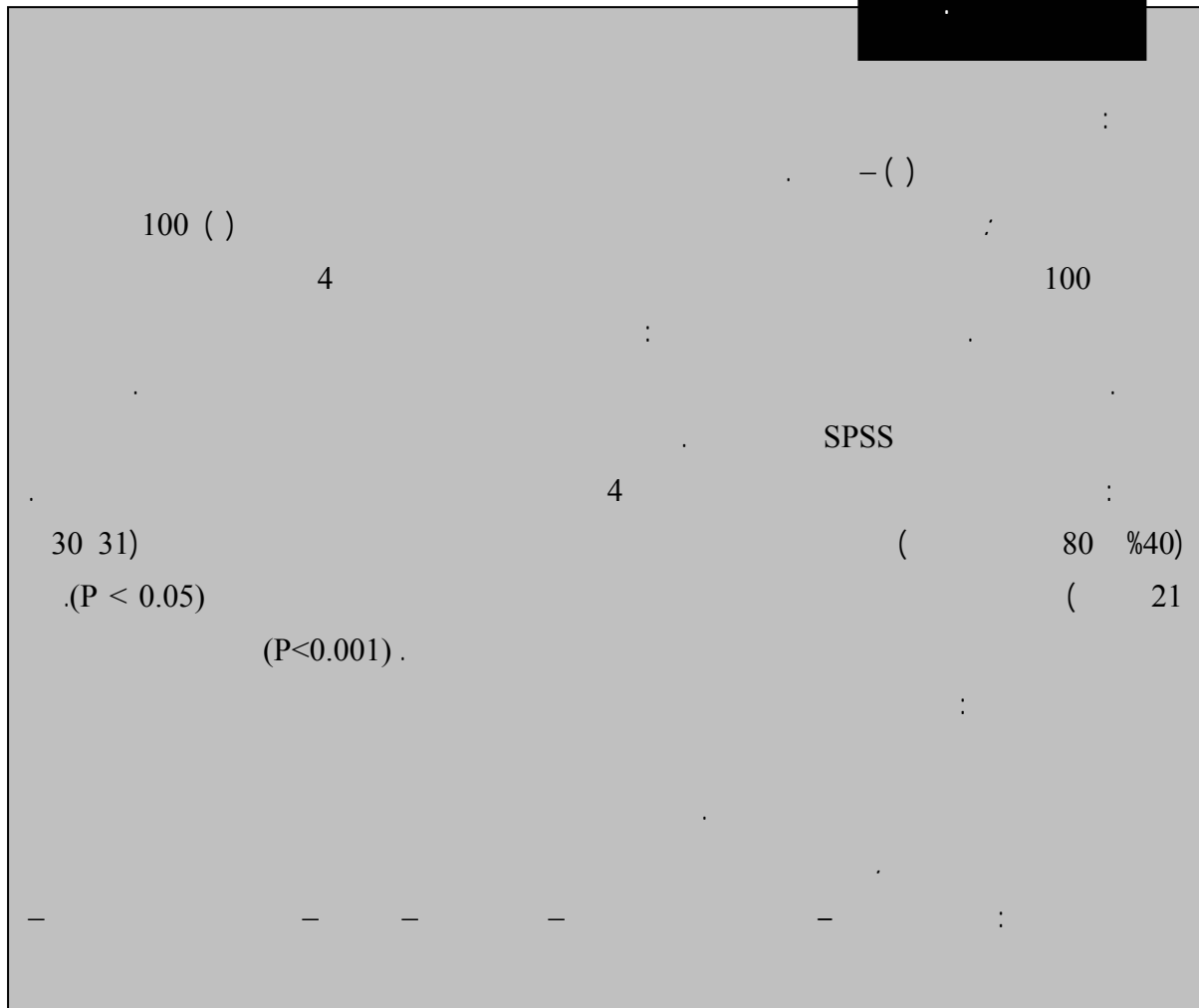
(80 %40)

(21 30 31)

(P < 0.05)

(P<0.001)

Archive of SID



References :

1. Barrett-Connor E. Sex differences in coronary heart disease. Why are women so superior? The 1995 Ancel Keys Lecture. *Circulation*. 1997 Jan 7;95(1):252-64.
2. Wegner N. The natural history of coronary artery disease in women. *Epidemiology; coronary risk factors among women who smoke cigarettes*. *NEJM*. 1987;317:1303-9
3. Ockene Jk, Bonollo DP, Adams A. Smoking in Charney P, ed. *coronary artery disease in women*, 1999. Philadelphia : American college of physicians; 1999 .
4. Shapiro S, Salone D, Roseberg L, et al. Oral-contraceptive use in relation to myocardial infarction. *Lancet*. 1979 Apr 7;1(8119):743-7.
5. Bittner V, Oparil S. Hypertension . In : Douglas PS(ed) . *Cardiovascular health and disease in women*. Philadelphia : WB Saunders ; 1993 : P63.
6. Detection, evaluation and treatment of high blood cholesterol in Adult (Adult treatment panel II). *Circulation*. 1994;89:1329.
7. Eaker ED, Castelli WP. Coronary heart disease and its risk factors among women in the Framingham study. Eaker ED, Packer B, Wegner N, et al. *Coronary heart disease in women*. New York : Hay market Doyma ; 1987 : P122.