

** -Porcelain Fused to Metal

* مؤلف مسؤول

Si-O-Si

P.F.M

D₄

T₁₄

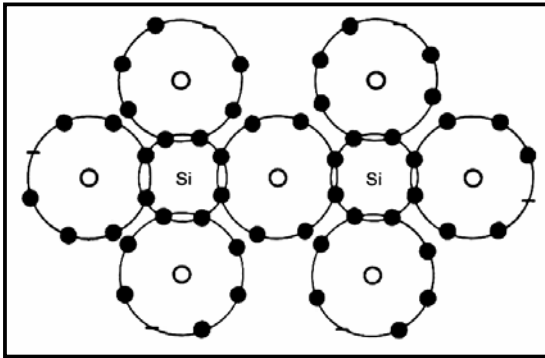
(Si-O)

D₄

T₁₄

P.F.M

Fonzi



:()

Si

D₄

T₁₄

(Si-O)

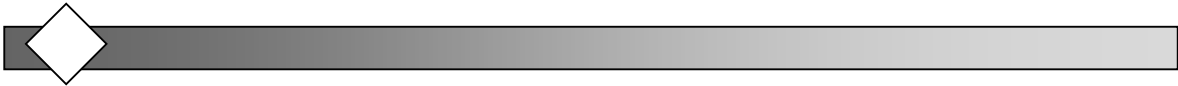
() *

SiO₄

**

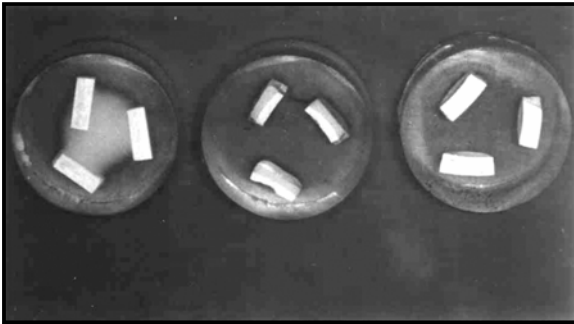
Si O

*- Glassformer
 **- Glass Modifier



μ μ
 ()
 :

D₄ T1₁₄ D₄



*
 **

(IC 50, Ic 10, Ic 5)

(SEM)

U=mgh

spss

HG3

M
 G
 H

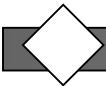
χ^2

D₄

(SEM)

D₄ T1₁₄

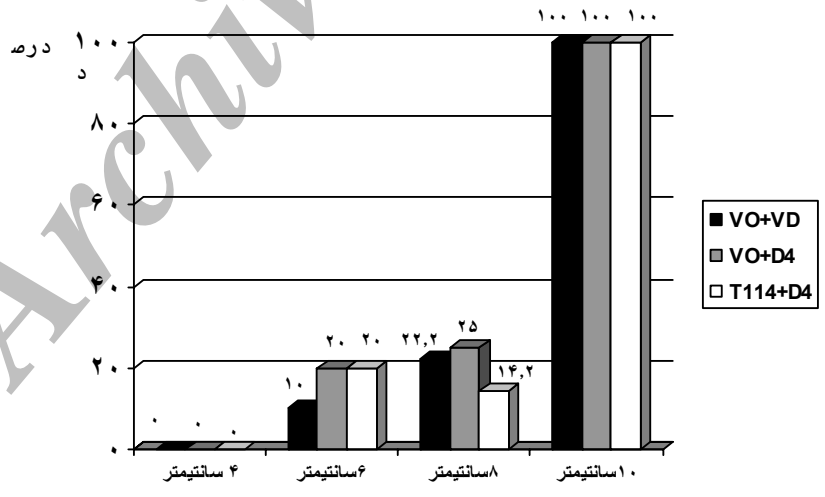
* Diamertal Compression test
 ** Instron
 *** Impact test



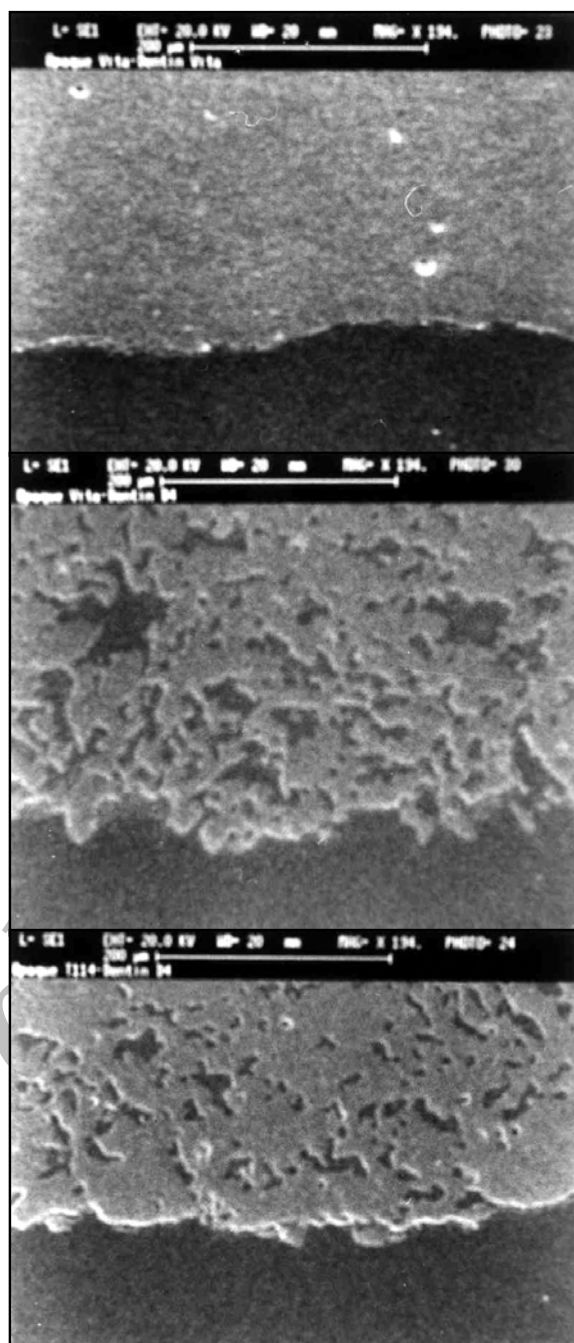
() : ()
 D₄ T₁₄ D₄

h	F	OV + DV	OV + D4	T114 + D4
Cm	/			
Cm	/			
Cm	/	(%)	(%)	(%)
Cm	/	(% /)	(%)	(%)
Cm	/	(%)	(%)	(%)

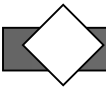
H: D₄: Dentin - D₄
F: T₁₄: opaque T₁₄
OV: Opaque - Vita **DV:** Dentin - Vita



(VO+VD) () : ()
 (T114+D4) D₄ T₁₄ (VO+D4) D₄



D4 T114 () D4 () ()
(SEM) ()



D₄ Tl₁₄

(P.F.M)

()

()

Tl₁₄

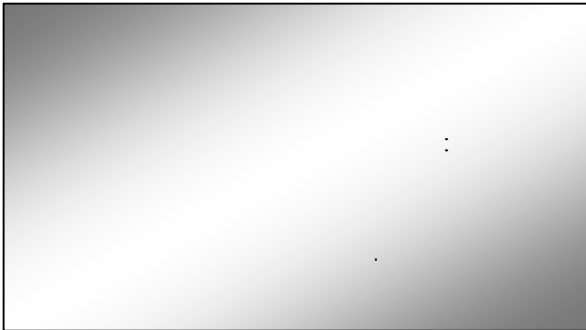
D₄ ()

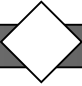
(SEM)

D₄

()

D₄ Tl₁₄



-
- 
2. Mclean JW. The Metal Ceramic Restoration. Dent.Clin. of North Am.1983; 27: 747-61.
 3. Dun Worth FD. Porcelain Fused to Gold. J.Porsthet. Dent. 1958; 8:635. (Abst)
 4. McLean JW. Dental Ceramics Proceedings of the First International Symposium on Ceramics Chicago, Quintessence. 1983; P: 72-6.
 5. McLean JW: The Science and Art of Dental Ceramic. V.1, 1st ed. Chicago: Quint. Pub. Co; 1979. P.37-8,
 6. DYKEMA R. Modern Practitce in Fixed Prosthodontics.3rd Ed. Philadelphia, W.B. Saunders Co.1986; P: 23, 139, 240.
 7. Derek WJ. The Sternight and Strenthening Mechanisms of Dental Ceramics.1st Ed. Chicago, Quintessence Pub. Co. 1983; P.83-91.
 8. Rosfntiel SF: Contemporary Fixed Prosthodontics. 1st ed. St. Louis: C.V. Mosby Co; 1988. P.389- 95.
 9. Craig RG, Powers JM.Restorative Dental Materials. 11th.ed. St. Louis: C.V. Mosby; 2002 . P.84-6

Archive of SID