

*



()

%

EDTA

/

/



Bergenhols Lindhe .()

.()

Hattler Listgarten

Root planning

.()

.()

Kiger

.()

.()

Wallace Bissada

() Seltzer

.()

.()

Stanly

.()

scaling

Lindhe

.()

Mazur Massler

.()

Rubach Mitchell

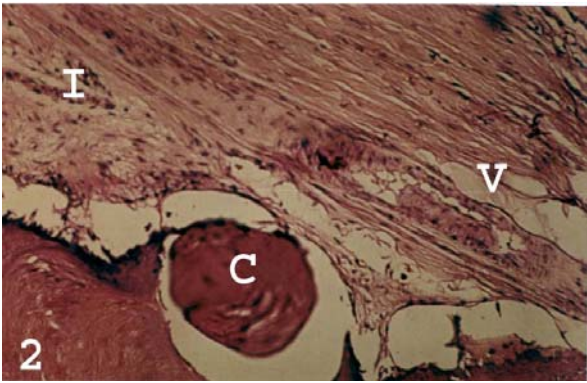
PDL

Stahl

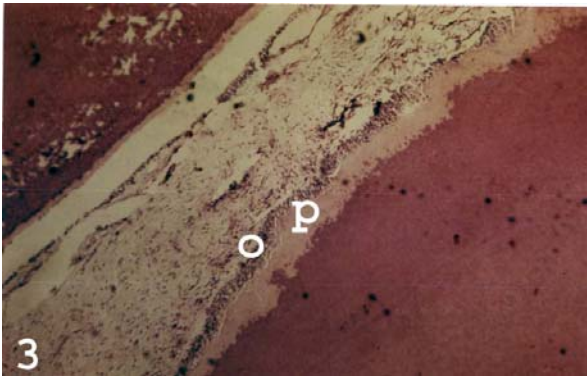
.()

Hattler

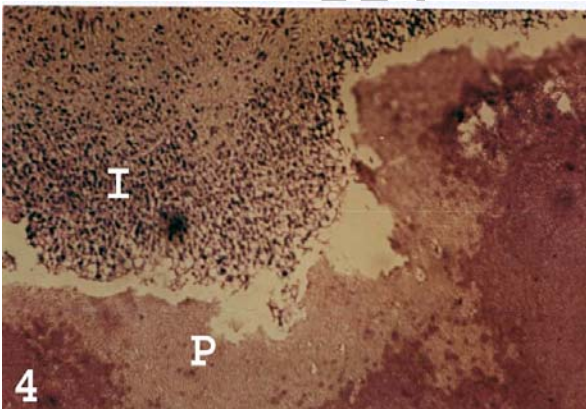
.()



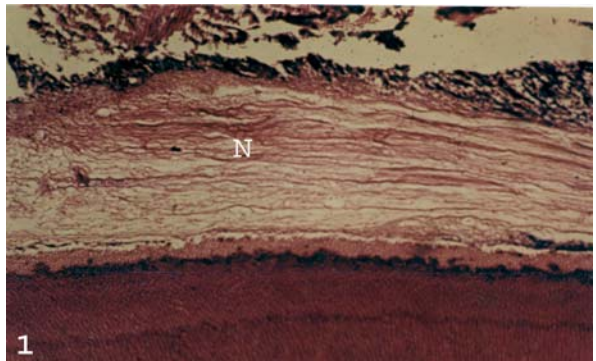
2
(I) (C) (V)



3
(P) (O)



4
(P) (I)



1
(N) (A)

%
EDTA
H&E

Archive of SID



:

		/		/				
		/				/		
		/		/				
		/		/		/		

:

		/		/				
		/		/				
		/		/		/		
		/		/		/		

:

/		/				/		
				/		/		
		/		/		/		
/				/		/		

Archive of SID

EDTA

()

() Langland.

() Czarnecki Schilder.

1. Walton R. Torabinejad M. Principles and practice of endodontics. 3rd ed Philadelphia: WB saunders co; 1995. P. 442.

2. Seltzer S. Bender IB, Ziontz M. Interrelationship of the pulp and periodontal disease. Oral Surg Oral Med Oral pathol 1963; 16: 1474-78.

3. Lindhe J. Text book of clinical periodontology. 3rd ed. WB Saunders co; 1984. P. 258.

4. Mazur B. Massler M. Influence of periodontal disease on the dental pulp. Oral Surg 1964; 17: 591-92.

5. Rubach WC, Mitcheel DF. Periodontal disease, accessory canals and pulp pathosis. J Periodontol 1965;8:201-6.

6. Stahl S. Surgical aspects of combined endodontic periodontic therapy. Periodontal surgery, Biologic Basis and technique. American lecture series Washington DC: 1983. P. 374.

7. Hattler AB. The lack of pulpal pathosis in rice rates with the periodontal syndrom. Oral Surg 1977; 44: 939-43.

8. Bergenholtz G. Lindhe J. Effect of experimentally induced marginal periodontitis and periodontol scaling on the dental pulp. J Clin periodontal 1978; 5: 59-63.

9. Hattler AB, Listgarten MA. Pulpal response to root planning in a rat model. J Endod 1984; 10: 171-6.

10. Torabinejad M, Kiger RD. A histologic evaluation of dental pulp tissue of a patient with periodontal disease. Oral Surg Oral Med Oral Pathol 1985; 59: 198-205.

11. Wallace JA, Bissasa NF. Pulpal and root sensitivity rate to periodontal therapy. Oral Surg Oral Med Oral Pathol 1990; 69: 743-55.

12. Langland K, Langland LK. Histologic study of 155 impacted teeth. Odont J 1965; 73: 527-44.

13. Czarnecki RT, Schilder H. A histological evaluation of the human pulp in teeth with varying degree of periodontal disease. J Endod 1979; 5: 242-53.

15. Hiath W. Pulpal – periodontal disease. J Periodontol 1977; 48: 598-607.

% ()Seltzer

%

% %

()Hiatt ()Langland

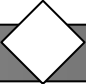
Schilder

()Mazur Massler ()Czarnecki

()



Archive of SID



Histological evaluation of pulpal status in patients with periodontal diseases.

Ghoddusi J*. DDS

Associate Professor, Dept of Endodontics
Mashad University of Medical Sciences, Mashad, Iran.

Bidar M. DDS

Assistant Professor Dept of Endodontics
Mashad University of Medical Sciences, Mashad, Iran.

Salehinejad J. DDS

Assistant Professor, Dept of Pathology
Mashad University of Medical Sciences, Mashad, Iran.

Hafez MT. DDS

Assistant Professor, Dept of Maxillofacial Surgery
Mashad University of Medical Sciences, Mashad, Iran.

Abstract

Introduction: The close relationship between endodontics and periodontics is firmly established. Many authors claimed that pulpal inflammation may occur following periodontal diseases.

The purpose of this study was histological evaluation of pulp in teeth with periodontitis.

Materials & Methods: 32 single root teeth with periodontal diseases and without any caries and restoration selected for extraction were used in this study.

Extractions were done after special clinical and radiographical examination. Samples were fixed in 10% formalin and then decalcified by EDTA for three months. Six micron sections were prepared and stained by H & E. Pulp status was evaluated histologically under light microscope.

Results: Results showed that the amount of inflammatory cells was directly related with mobility and pocket depth. Atrophy in pulpal vessels as well as calcific feature were found in samples with deeper pocket.

Conclusion: The findings imply that pulp is significantly affected by periodontal disease. This should be a carefully considered factor when dental treatment is planned.

Keywords: histological evaluation, periodontal disease, pulpal status



* Corresponding Author

Archive of SID



16. Walton R, Torabinejad M. Principles and practice of endodontics. 3rd ed Philadelphia: WB Saunders co; 1995. P. 442.
17. Seltzer S, Bender IB, Ziontz M. Interrelationship of the pulp and periodontal disease. Oral Surg Oral Med Oral Pathol 1963; 16: 1474-78.
18. Lindhe J. Text book of clinical periodontology. 3rd ed. WB Saunders co; 1984. P. 258.
19. Mazur B, Massler M. Influence of periodontal disease on the dental pulp. Oral Surg 1964; 17: 591-92.
20. Rubach WC, Mitcheel DF. Periodontal disease, accessory canals and pulp pathosis. J Periodontal 1965;8:201-6.
21. Stahl S. Surgical aspects of combined endodontic periodontic therapy. Periodontal surgery, Biologic Basis and technique. American lecture series Washington DC: 1983. P. 374.
22. Hattler AB. The lack of pulpal pathosis in rice rates with the periodontal syndrom. Oral Surg 1977; 44: 939-43.
23. Bergenholtz G, Lindhe J. Effect of experimentally induced marginal periodontitis and periodontal scaling on the dental pulp. J Clin periodotal 1978; 5: 59-63.
24. Hattler AB, Listgarten MA. Pulpal response to root planning in a rat model. J Endod 1984; 10: 171-6.
25. Torabinejad M, Kiger RD. A histologic evaluation of dental pulp tissue of a patient with periodontal disease. Oral Surg Oral Med Oral Pathol 1985; 59: 198-205.
26. Wallace JA, Bissasa NF. Pulpal and root sensitivity rate to periodontal therapy. Oral Surg Oral Med Oral Pathol 1990; 69: 743-55.
27. Langland K, Langland LK. Histologic study of 155 impacted teeth. Odont J 1965; 73: 527-44.
28. Czarnecki RT, Schilder H. A histological evaluation of the human pulp in teeth with varying degree of periodontal disease J Endod 1979; 5: 242-53.
30. Hiath W. Pulpal – periodontal disease. J Periodotal 1977; 48: 598-607.

Archive of SID



:

جمع		پالپایتیس		فیروزه		نکروز		تشخیص کلی پالپ لقی
درصد	تعداد	درصد	تعداد	درصد	تعداد	درصد	تعداد	
۱۵	۵	۱۸/۸	۳	۲۲/۲	۲	۰	۰	هیچ
۲۹	۸	۳۷/۵	۶	۰	۰	۶۶/۷	۲	خفیف
۱۰	۳	۱۲/۵	۲	۱۱/۱	۱	۰	۰	متوسط
۴۳	۱۲	۳۱/۳	۵	۶۶/۷	۶	۳۳/۳	۱	شدید
۱۰۰	۲۸	۱۰۰	۱۶	۱۰۰	۹	۱۰۰	۳	جمع

:

جمع		پالپایتیس		فیروزه		نکروز		تشخیص کلی پالپ تستهای حیاتی پالپ
درصد	تعداد	درصد	تعداد	درصد	تعداد	درصد	تعداد	
۱۴	۴	۱۸/۰	۳	۱۱/۱	۱	۰	۰	نرمال
۲۲	۶	۲۵/۰	۴	۲۲/۲	۲	۰	۰	حساسیت شدید
۴۲	۱۲	۳۷/۵	۶	۵۵/۶	۵	۳۳/۳	۱	حساسیت کم
۲۲	۶	۱۸/۸	۳	۱۱/۱	۱	۶۶/۷	۲	عدم جواب
۱۰۰	۲۸	۱۰۰	۱۶	۱۰۰	۹	۱۰۰	۳	جمع

:

جمع		پالپایتیس		فیروزه		نکروز		تشخیص کلی پالپ تستهای حیاتی پالپ
درصد	تعداد	درصد	تعداد	درصد	تعداد	درصد	تعداد	
۳/۵	۱	۶/۳	۱	۰	۰	۰	۰	نرمال
۴۳	۱۲	۵۰	۸	۳۳/۳	۳	۳۳/۳	۱	۳-۵ میلیمتر
۱۸	۵	۱۸/۸	۳	۱۱/۱	۱	۳۳/۷	۱	۵-۷ میلیمتر
۳۵/۵	۱۰	۲۵	۴	۵۵/۶	۵	۳۳/۳	۱	۷ میلیمتر
۱۰۰	۲۸	۱۰۰	۱۶	۱۰۰	۹	۱۰۰	۳	جمع



Archive of SID



Archive of SID