

**WAM**

\*

WAM

WAM

/ m / m

.WAM

WAM .[ ]

.[ ]

---

Email: sazarmsa@gmail.com

: :

\*

WAM

[ ]

WAM

WHIST

[ ]

WAM

(IOUG)

[ ]

Swancycle Wamcycle

WAM

WAM

/ \* /

[ ]

[ ]

(WAM)

[ ]

---

3. Significant wave height

---

1. Lewex  
2. Swade

(RAM)

[ ]

/ ° /  
° / °

CPU [ ]

(DOCTOR)

(Chief.IN, Preset.IN & Preproc.IN)

(ship log)

(PC)

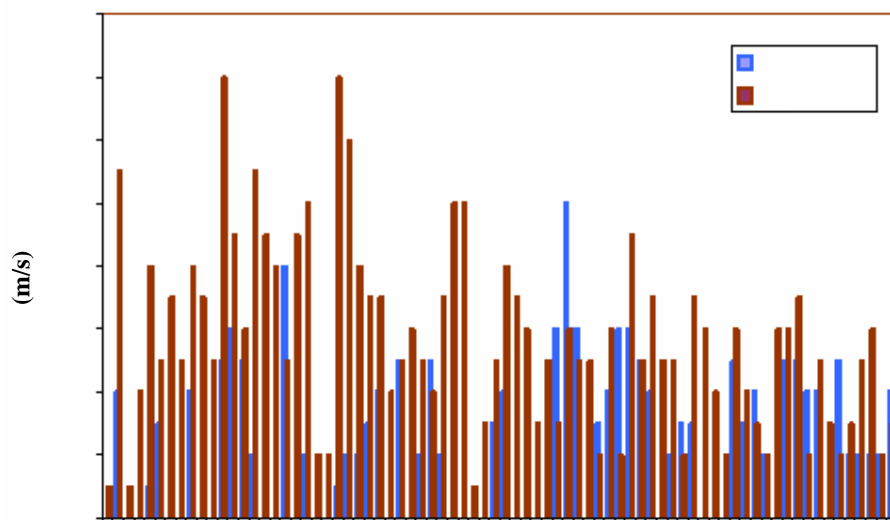
m/s

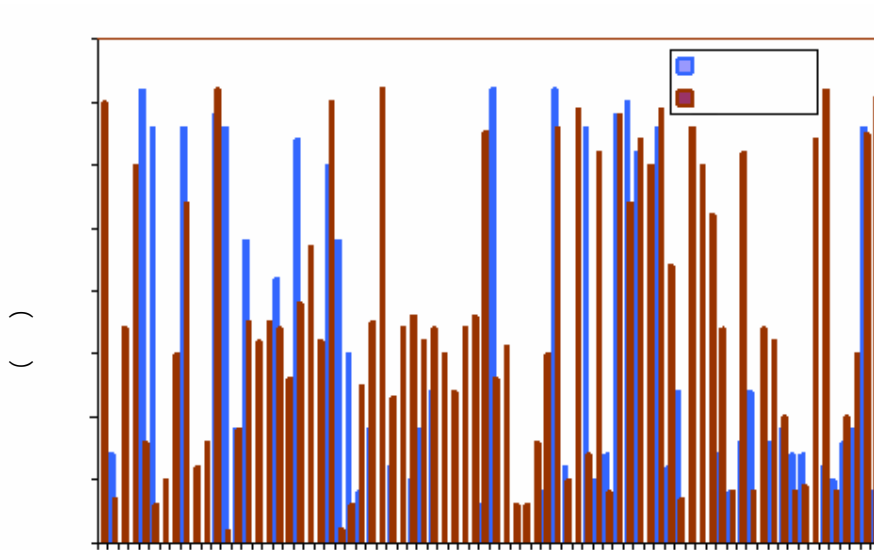
(UTC)

)

(

	(m)			( )	( ) <sup>(°)</sup> (m/s) ( )	( )	
	,						/ /
	,						/ /





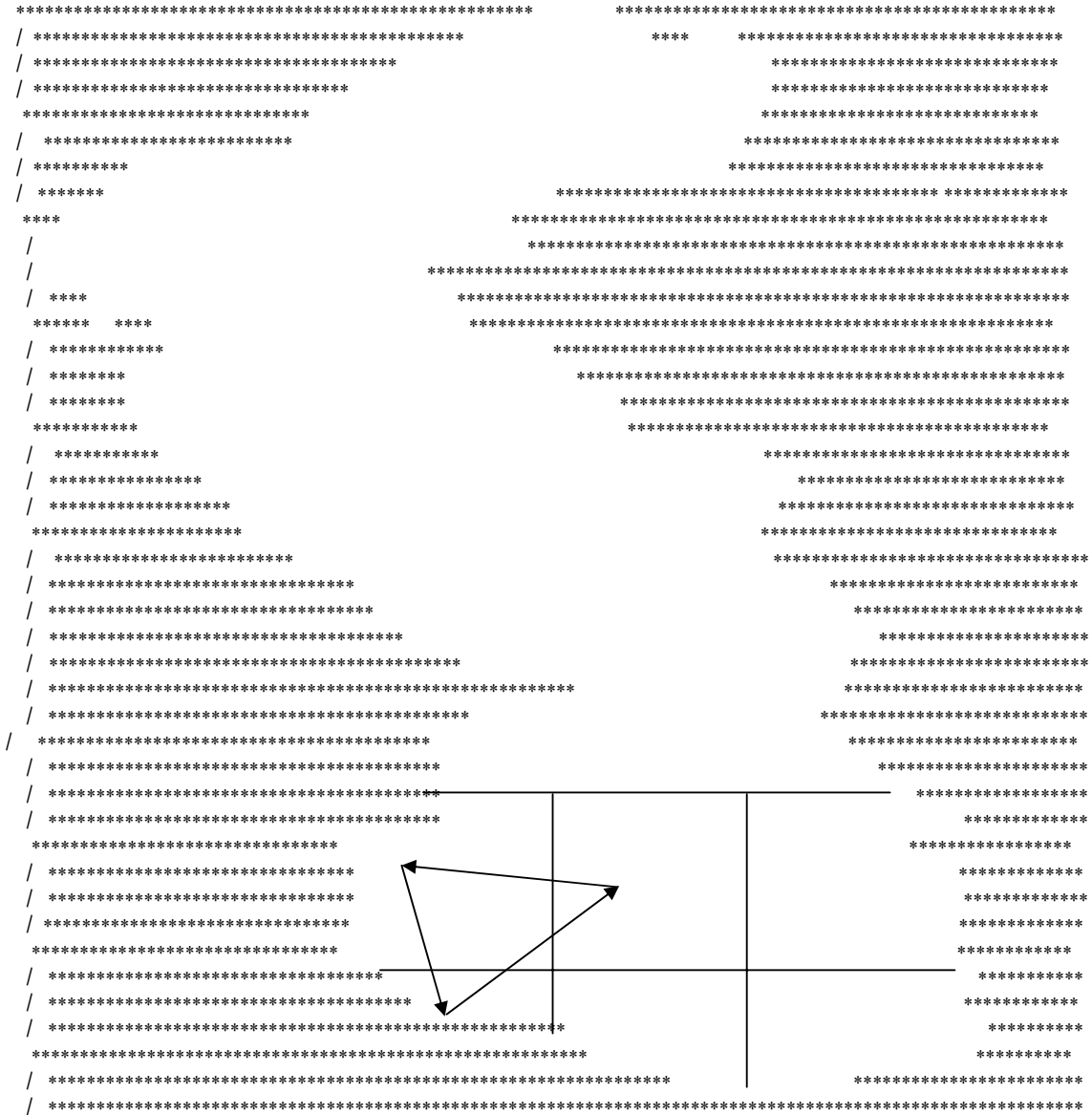
( )

WAM

I=

LON=

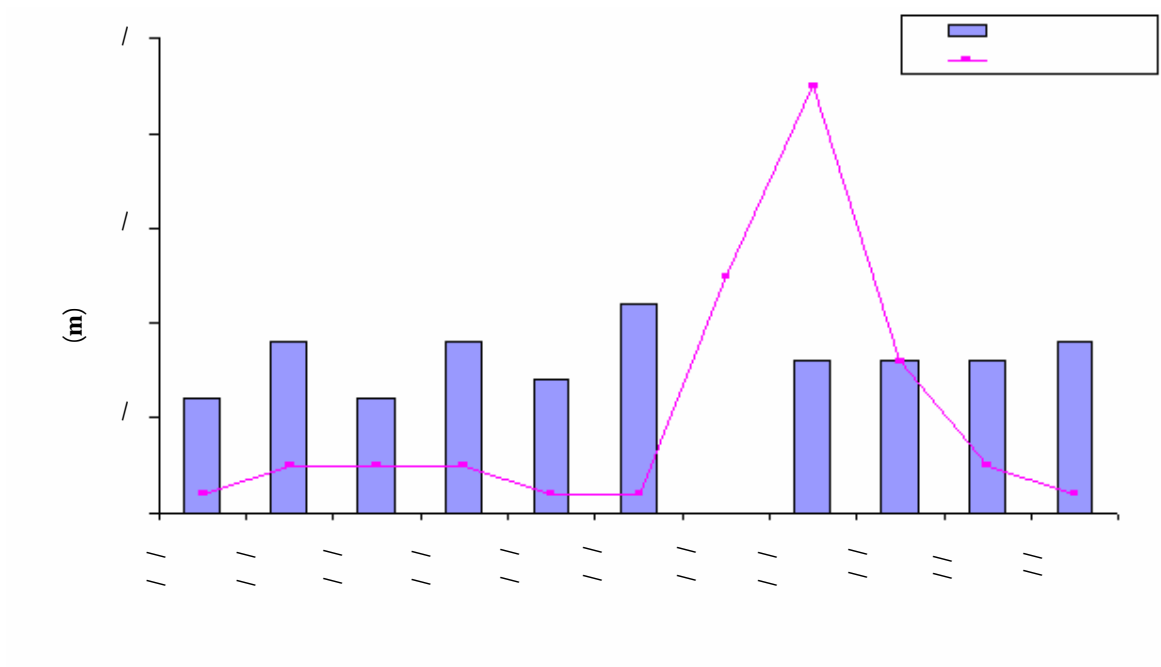
JLAT

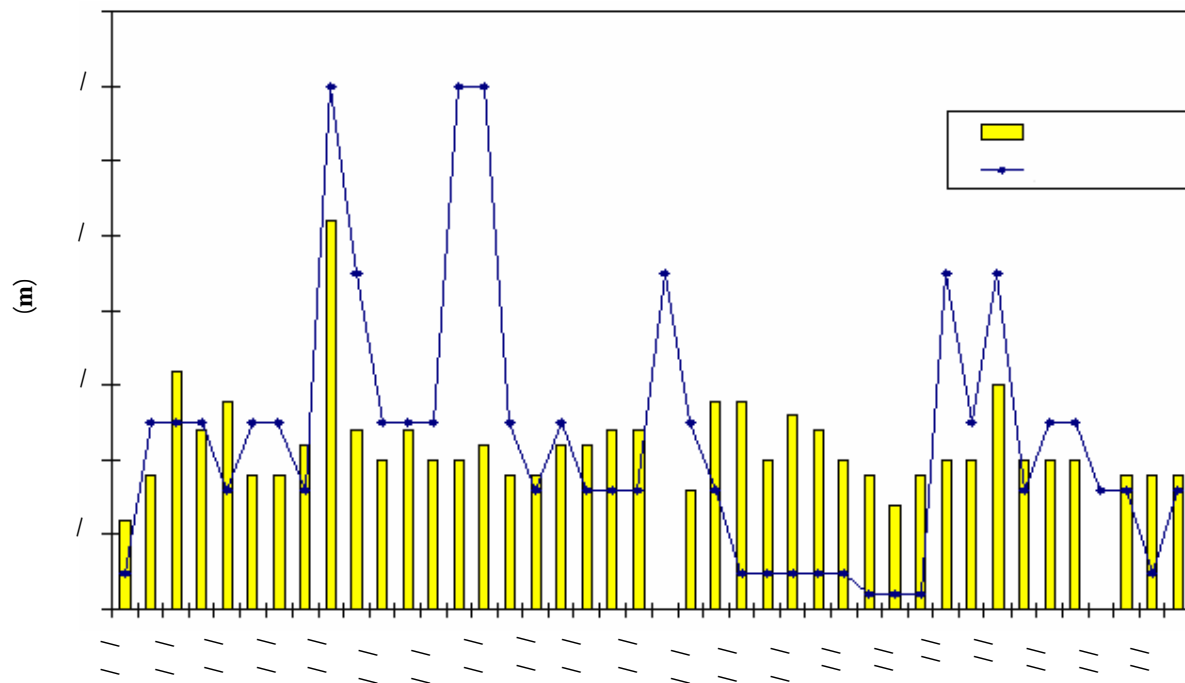
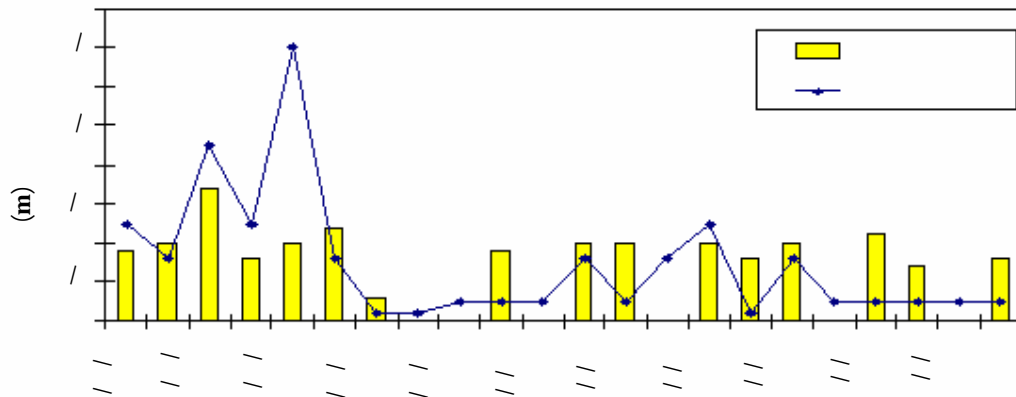


° 'E	° 'E	° 'N	۰۰۰۳^N	
° 'E	° 'E	۰۰۰۳^N	° 'N	
° 'E	° 'E	۰۰۰۳^N	° 'N	

( )

m/s-







				rms (m)
/	/	/	/	

( / m)

( / m)

WAM

( )

( )

/ m / m

- « » . [ ] [1] Alves J.H.G.M., Melo E.; «On the measurement of directional wave spectra at the southern brazilian coast»); *Applied Ocean Research*; 1999; 21(6): 295-309.
- « » . [ ] [2] Bowers J. A., Morton I. D., Mould G. I.; «Directional statistics of the wind and waves»); *Applied Ocean Research*; 2000; 22 (1):13-30.
- » . . . [ ] [ ]
- WAM MIKE [ ]
- ( ) « [ ] [4] Komen G. J., Cavaleri L., Donelan M., Hasselmann K., Hasselmann S., Janssen P.A.E.M.; *Dynamics and Modelling of Ocean Waves*; Cambridge University Press; Cambridge, UK; 1994; 560p.
- » . . . [ ] [5] Cieslikiewicz W., Herman A.; «Wave and current modeling over the Baltic Sea and the Gdansk Bay»); *Proc.28<sup>th</sup> International Conf, Coastal Eng*; 2002;Vol. 1, I,176-187.
- « [ ]

- 
- [15] U. S. Army Corps of Engineers; Coastal Engineering Manual, ASCE; 2001. [ ]
- [16] Tucker M. J.; Waves in ocean Engineering-measurement, analysis and interpretation; Ellis Horwood, New York; 1991. » [ ]  
«WAM
- [17] Emery W.J., Thomson R.E.; Data Analysis Methods In Physical Oceanography; 1998; 327-328.
- [18] World meteorological organization; Guide to wave analysis and forecasting; 1988; 58-62.
- [13] U.S. Army Corps of Engineers; Shore protection Manual, Ft. Belvoir, VA: Coastal Eng; Research Center; 1977.
- [14] U.S. Army corps of Engineers; Shore protection Manual, Vicksbury, MS: Coastal Eng; Research Center; 1984.