

(*Pampus argenteus*)

*

(FL) / cm

$$b = / \quad W = / \times FL^1 \quad / \quad \text{g/cm} \quad (\quad)$$

.(p> /)

Pampus argenteus

(Silver pomfret)

Stromatidae

[]

[]

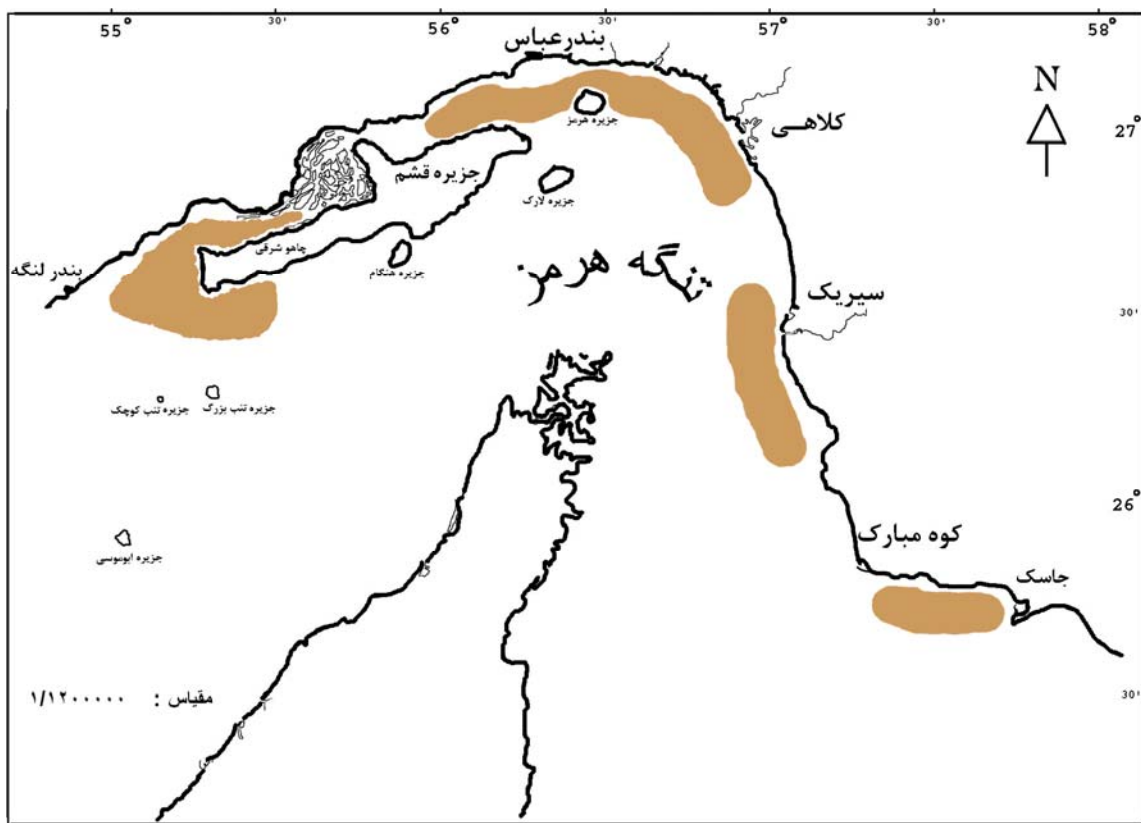
[]

[]

[]

FiSAT

()



()

[]

[] ()

$$W = a.l^b \quad ()$$

:W
:a
:L
:b

$$B = \frac{W}{L^\gamma.H} \quad ()$$

:L
:B
:W
:H

()

Lm

()

$$t = \frac{s.d(L)}{s.d(w)} \times \frac{|b-r|}{\sqrt{1-r^2}} \times \sqrt{n-r^2}$$

()

:s.d (L)
:s.d (W)
:r
:b
:n

[]

: Solver

$$P = / [+\exp(-r(L-L_m))] \quad ()$$

:P
:r
b .(p> /) b

1-Allometric
2-Isometric
3. Condition factor

:L

:L_m Δ

:(

$$W = / \times F.L /$$

$$W = / \times F.L /$$

GSI

b

T

/ g

r

(GSI)

:[]

$$GSI = \frac{G_w}{B_w} \times 100 \quad ()$$

:

)

:G_w

/

(

:B_w

GSI

:[]

GSI

/

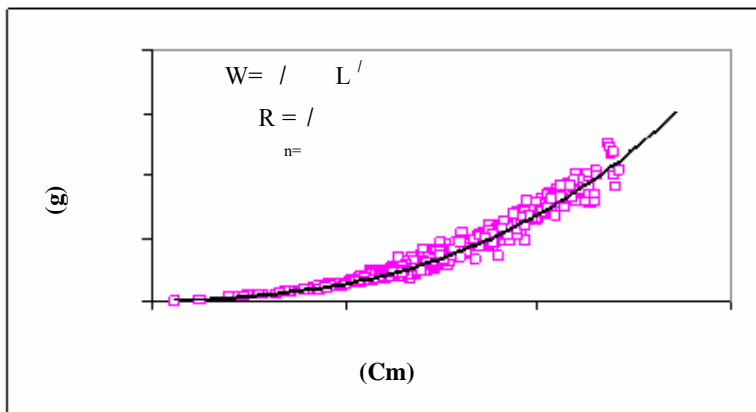
/

b a

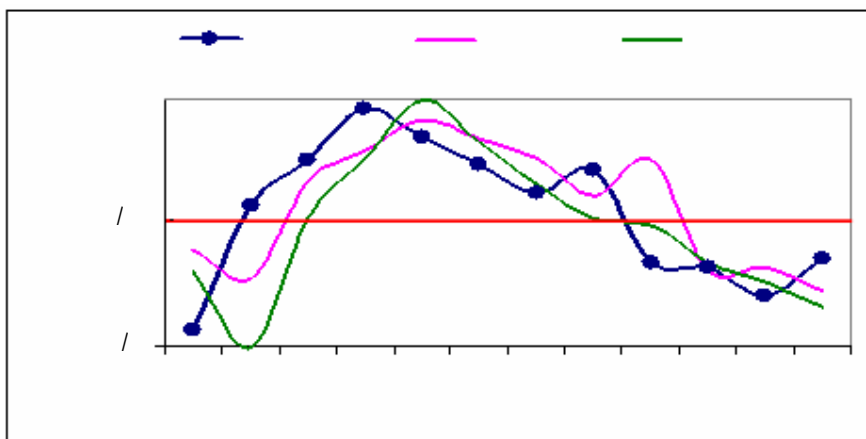
(r = /) / /

:()

$$W = / \times F.L /$$

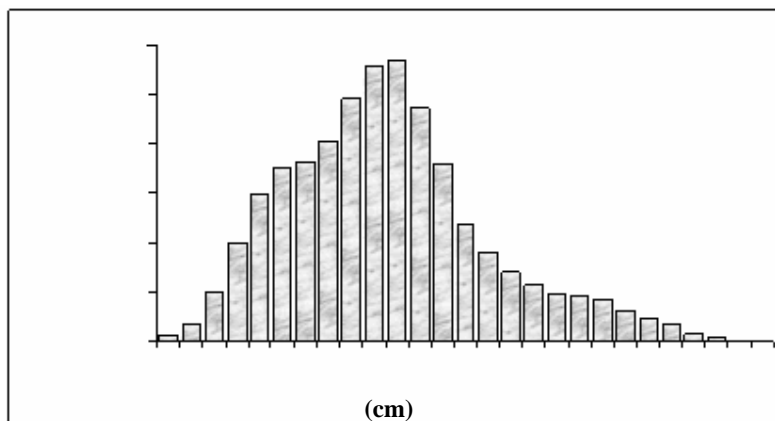


()

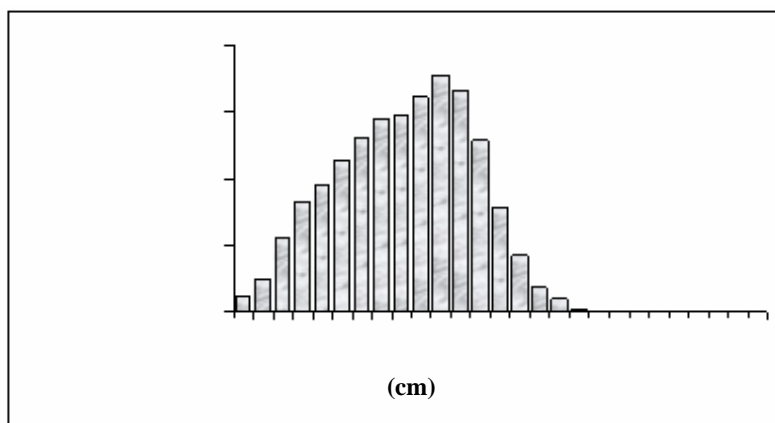


()

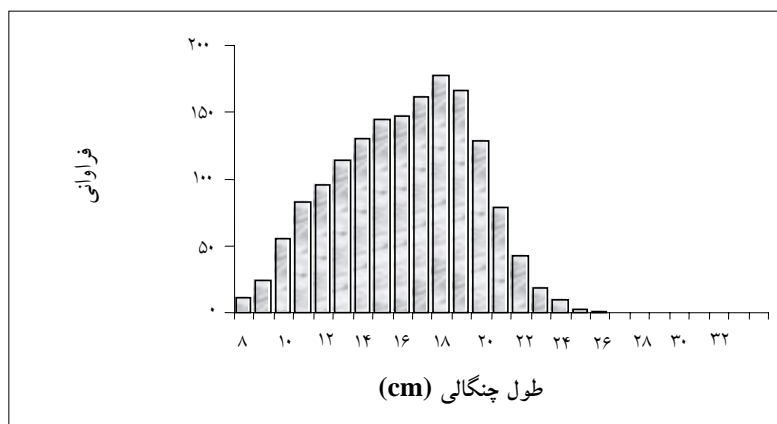
$\% /$. $/ \text{ cm}$
 cm
 $\% /$ cm
 cm . cm
 $/ \text{ cm}$
 cm . $()$. $/ \text{ cm}$
 cm cm $\% /$ $/ \text{ cm}$
 $()$



()



()



()

Lm

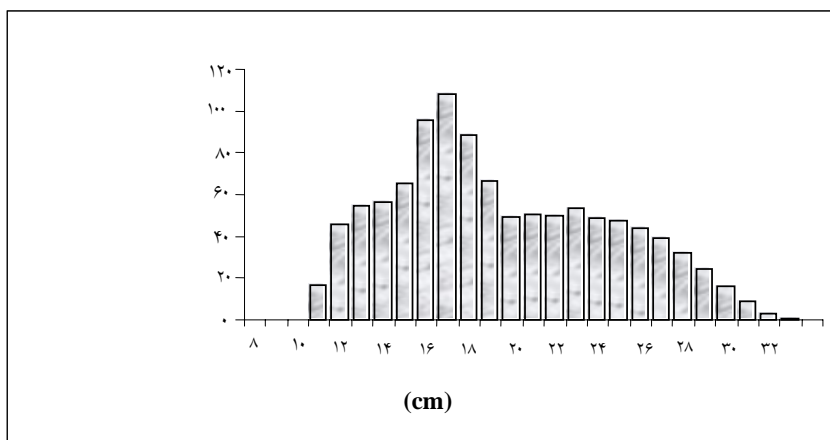
()

%

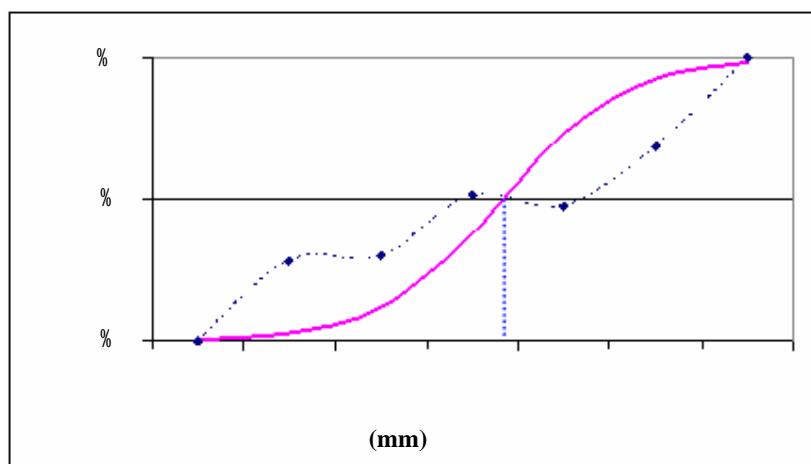
Lm

()

mm (F.L)



()



Lm

()

					(cm)

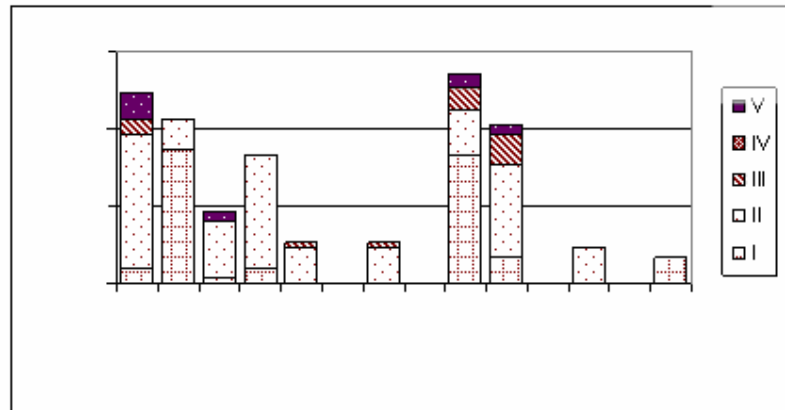
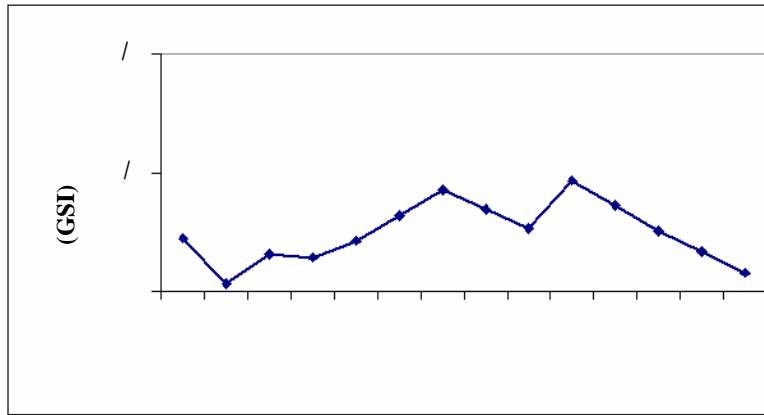
()
% /

GSI

()

()

()



$(w \propto L^{\gamma})$

$(a = \frac{W}{L^{\gamma}})$

b>

b<

b=

[]

cm

[]

cm(F.L)

[]

cm

% /

[]

% /

(H)

cm

$$B = \frac{W}{L \cdot H}$$

cm

[]

/

[]

(GSI)

[]

[]

Lm

[]

[]

[]

[]

	Lm	
	[]	
	cm	()
[]	/	[]
	[]	/ cm (T.L)
		Lm
	[]	
[]		
	/ cm /	% /
	/ cm /	
	/ cm /	
		[]

- [1] Fischer w., Bianchi G.; FAO species identification sheets for fishery porpuse. Western Indian Ocean (Fishing area 51); Marine Resourses Service. Fishery Resources and Environment Division; FAO Fisheries Department. Rome, Italy; 1984; Vol. I.; 618 p.
- [2] FAO; Methods of collecting and analysing size and age data for fish stock assessment; FAO. Fish. Circ.; 1981; (736): 100 p.
- [3] Biswas S. P.; Manual of methods in fish biology; South Asian publishers; 1993; p.157.
- [4] Pauly D.; Some simple methods for the assessment of tropical fish stocks; FAO Fish. Tech. Pap. Rome; 1983; 234: 52 p.
- [5] Alagaraja K.; «Simple methods for estimation of parameters for assessing exploited fish stocks»); *Indian J. Fish.*; 1984; Vol. 31, 177-208.
- [6] Jones R. E., Petrell R.J., Pauly D.; «Using modified length-weight relationships to assess the condition of fish»); *Aquacultural Engineering*; 1999;20: 261-276.

- [7] King M.; Fisheries Biology, Assessment and Management; Oxford, UK, Fishing News Books. Blackwell Science Ltd; 1995; P.342.
- [8] Pauly D., S-Bartez M., Moreau J., J-Teichmann A.; «A new model accounting for seasonal cessation of growth in fishes»; *Aust. J. Mar. Freshwater Res.*; 1992; 43, 6-1151.
- [9] Gopalon, U. K., 1969, Studies on the maturity and spawning of silver pomfret. *Pampus argenteus* (Euph.) in the Arabian sea. *Bul. Nat. Sci (India)*, 785-796.
- [10] Gulland J. A., Rosenberg A. A.; A review of length-based approaches to assessing fish stocks; FAO Fisheries Technical Paper; 1992; No. 323: 100 p.
- []
(*Pampus argenteus*)
- Pampus* []
Otolites ruber argenteus
- [13] Mathews C. P.; Fisheries management in a developing country: the most appropriate balance of size and age-related methods for practical assessments; p. 321-334. In Pauly D. and Morgan G.R. (eds.) Length-based methods in fisheries research; 1987; 13, 468 p.
- [14] Shapiro D. Y.; Reproduction in groupers; 1987; p.301.
- [15] Dadzie S., Abou-Seedo F., Al-Shallal T.; Reproductive biology of silver pomfret. *Pampus argenteus* (Euphrasen), in Kuwait waters; In *Appl. Ichthyo*; 2000; 16, pp. 247-253.
- [16] Dadzie S., Abou-Seedo F., Al-Shallal T.; The onset of spawning in the silver pomfret, *Pampus argenteus* (Euphrasen), in Kuwait waters and its implications for management; *Fisheries management and ecology*; 1998; pp.501-510.
- []
- [18] Blaber S. J. M., Brewer D. T., Salini J. P.; Fish communities and the nursery role of shallow inshore waters of a tropical bay in the Gulf of Carpentaria, Australia; 1995; p.26.