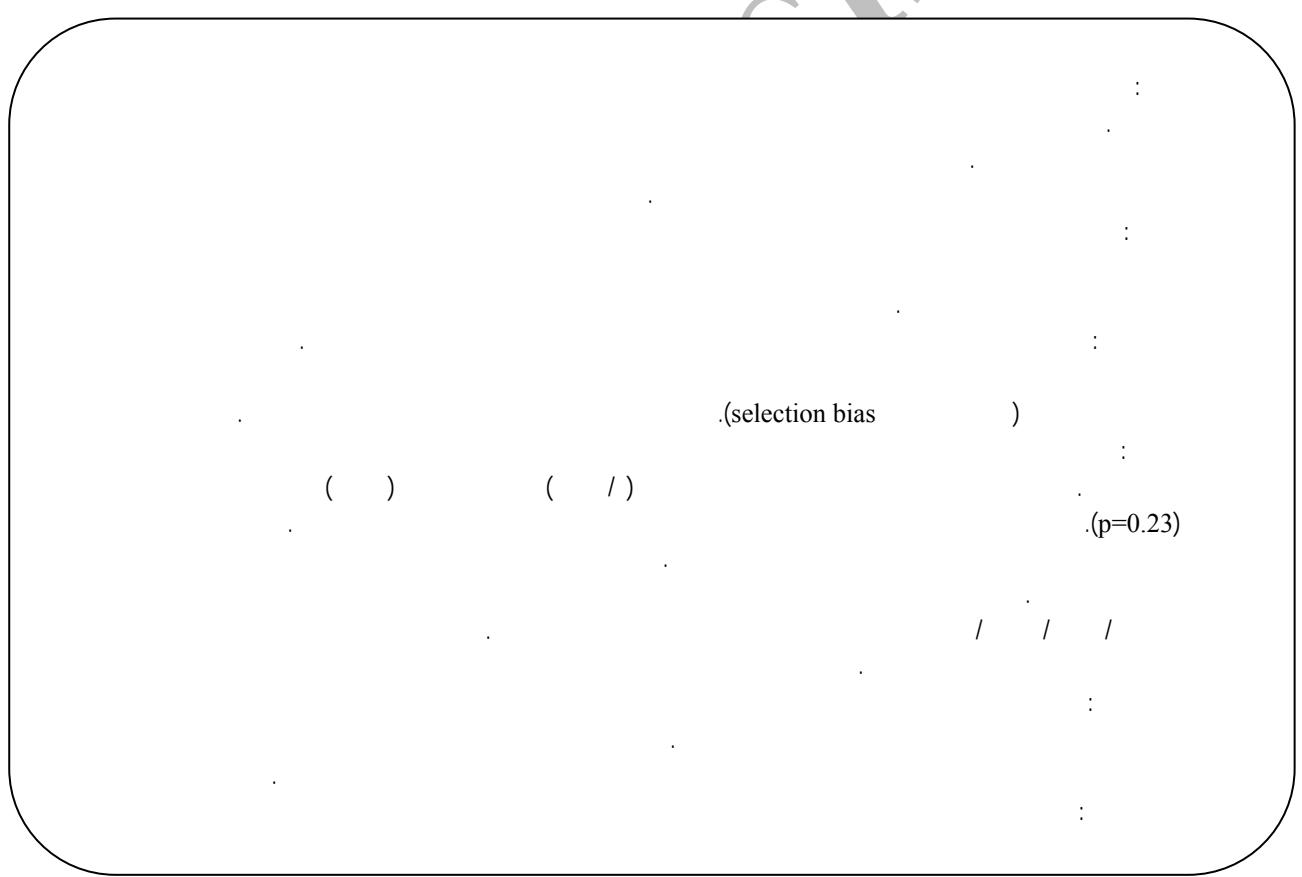


SID



• Email: ahaghdoost@kmu.ac.ir

• - : • - : • *

()

()

()

Archive of SID

()

»

«

()

()

ANOVA t students

Tukey

Epi-Info

SPSS Ver10

(sensored data)

(/)

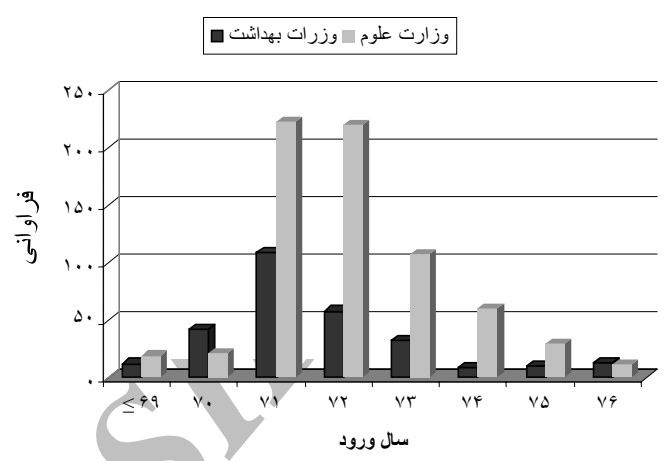
(P< /)

Archive of SID

$\chi^2 = 99/2$, $df = 6$, $P < 0/0001$

)
(\pm /) /
(\pm /) /

($P =$ /)



() (/)

()
(/) (/)

(/)

($P =$ /)

(/) (%) /
(/) (/)

()

($P =$ /)

($P =$ /)

(\pm)

(\pm /) /

($P =$ /)

Tukey

($P =$ /)

(\pm)

(\pm)

:

()	()	()	()
(/)	(/)	(/)	<
(/)	(/)	(/)	-
(/)	(/)	(/)	>
()	()	()	

()
)
 .(P= /

Chi²= / df= p< /

/ / / ()

.(P= /)

Archive of SID

/ /
 .(SD= /)

Archive of SID

%

2. Stone R. An Islami Science revolution. *Science* 2005;309:1802-4 .
4. Harvey LJ, Myers MD. Scholarship and practice: the contribution of ethnographic research methods to bridging the gap. *Information Technology & People* 1995;8(3):13-27.
5. Pathman DE, Taylor DH, Konrad TR, King TS, Harris T, Henderson TM, Bernstein JD, Tucker T, Crook KD, Spaulding C, Koch GG. State Scholarship, Loan Forgiveness, and Related Programs. *JAMA* 2000;284(16): 2084-92.

.73-84:

7. Jochems W, Snippe J, Smid HJ, Verweij A. The academic progress of foreign students: study achievement and study behaviour. *Higher Education (Historical Archive)* 1996; 31(3):325 - 340.
8. Zuber-Skerritt O. Helping postgraduate research students learn. *Higher Education (Historical Archive)*. 1987; 16(1): 75 - 94.

Archive of SID